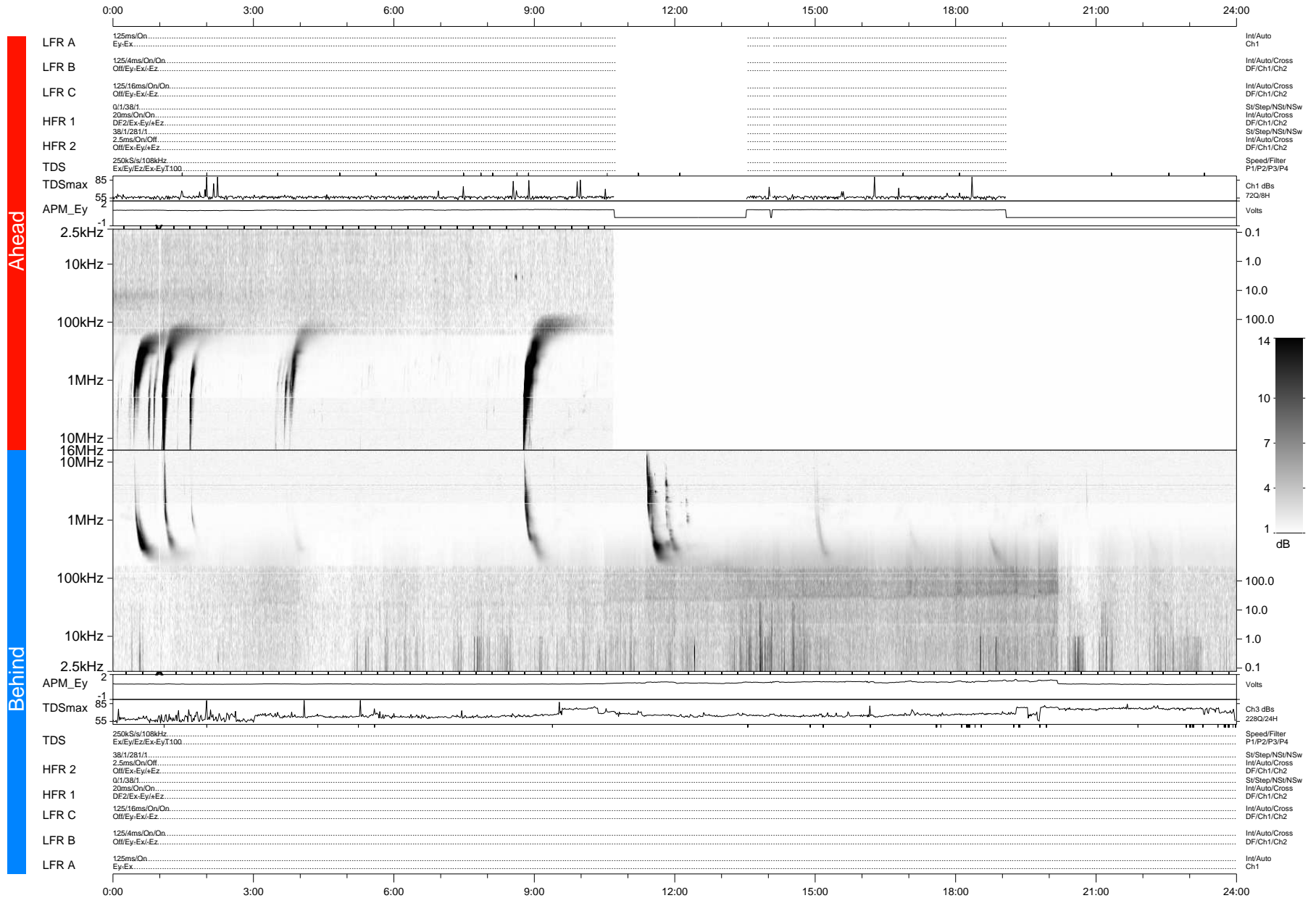


STEREO/WAVES Daily Summary - 29-Feb-2012 (DOY 060)

Ahead source file: swaves_ahead_2012_060_1_04.fin (Recovery: 67.6% HK, 40% Pkts)
 Ahead PSE Angle: 109.1°

DPU up 939.2d, V410d14



Behind PSE Angle: -117.4°
 Behind source file: swaves_behind_2012_060_1_05.fin (Recovery: 100.0% HK, 99% Pkts)

Time (UTC)

file: stereo_swaves_daily-summary_gray-status_20120229_v04 DPU up 1015.2d, V410d15
 made by: space.umn.edu on macOS with IDL 8.8.2 on 2022-10-14 03:48:13, with TMLib V945 / dynspec V311