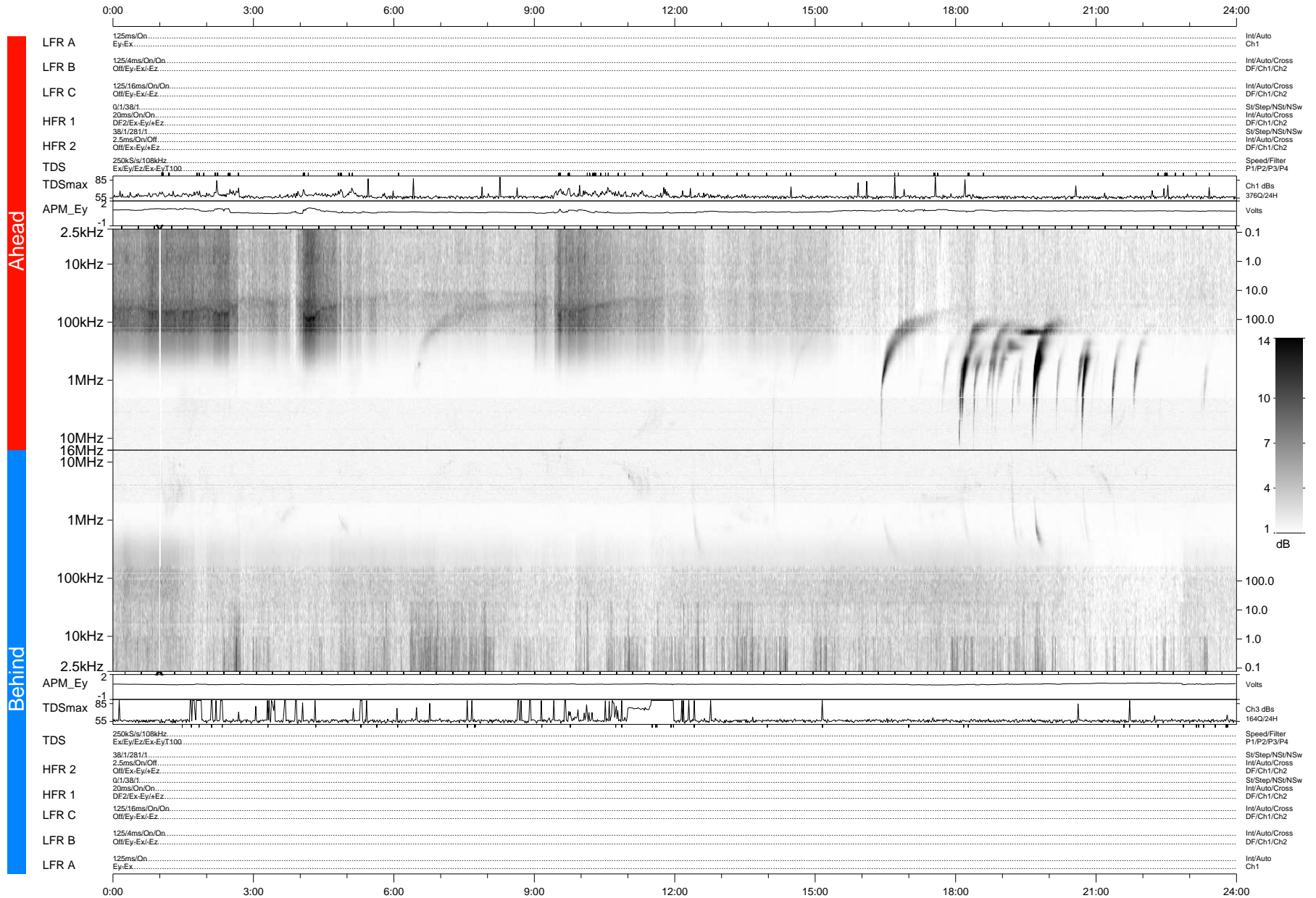


STEREO/WAVES Daily Summary - 21-Feb-2012 (DOY 052)

Ahead source file: swaves_ahead_2012_052_1_04.fin (Recovery: 100.0% HK, 121% Pkts)
 Ahead PSE Angle: 108.7°

DPU up 931.4d, V410d14



Behind PSE Angle: -116.9°
 Behind source file: swaves_behind_2012_052_1_04.fin (Recovery: 100.0% HK, 90% Pkts)

Time (UTC)

file: stereo_swaves_daily-summary_gray-status_20120221_v04 DPU up 1007.2d, V410d15
 made by: space.umn.edu on macOS with IDL 8.8.2 on 2022-10-14 03:25:43, with Tlib V945 / dynspec V311