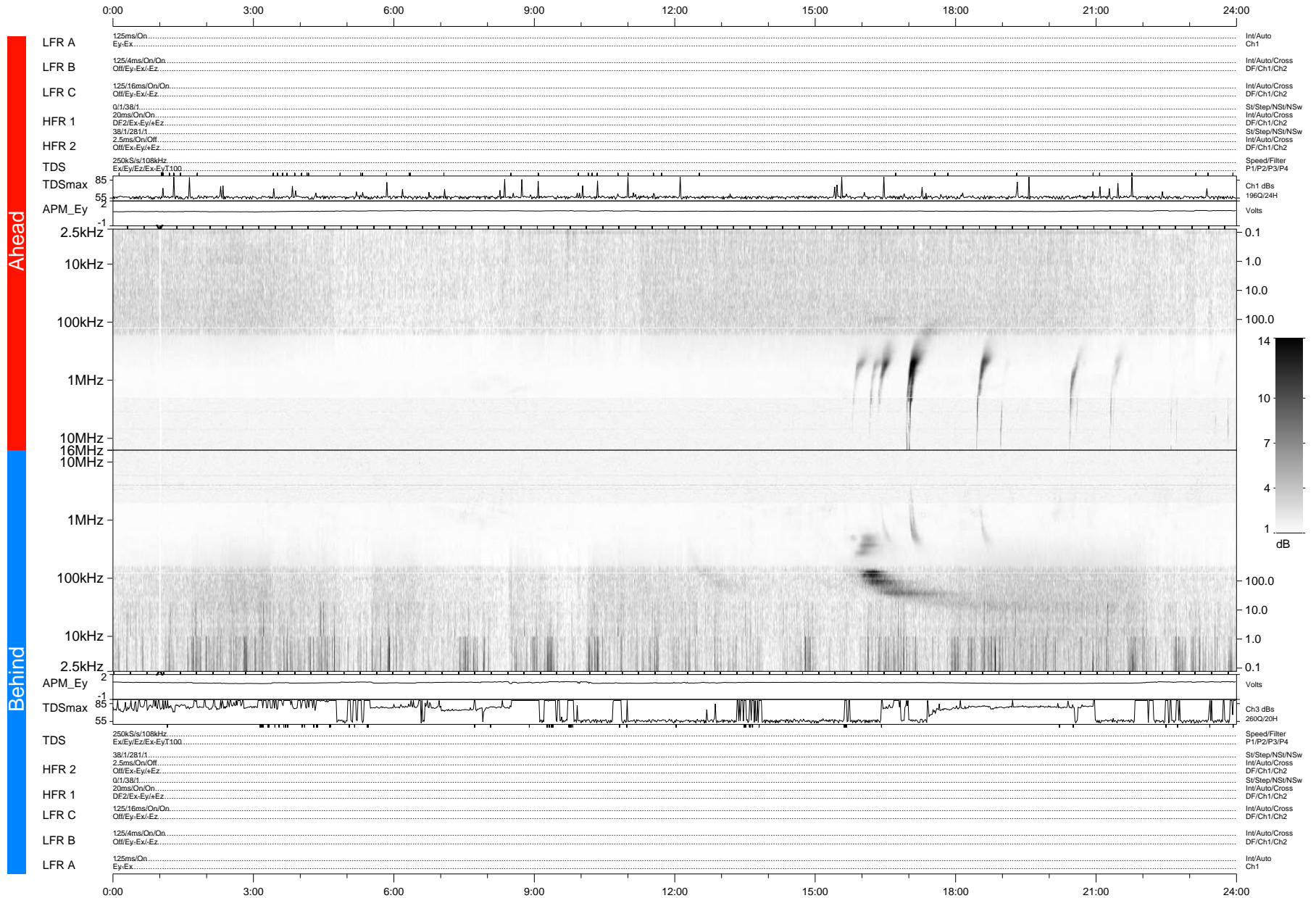


STEREO/WAVES Daily Summary - 15-Feb-2012 (DOY 046)

Ahead source file: swaves_ahead_2012_046_1_05.fin (Recovery: 100.0% HK, 94% Pkts)
 Ahead PSE Angle: 108.5°

DPU up 925.4d, V410d14



Behind PSE Angle: -116.4°
 Behind source file: swaves_behind_2012_046_1_04.fin (Recovery: 100.0% HK, 103% Pkts)

Time (UTC)

file: stereo_swaves_daily-summary_gray-status_20120215_v04 DPU up 1001.2d, V410d15
 made by: space.umn.edu on macOS with IDL 8.8.2 on 2022-10-14 03:08:26, with Tlib V945 / dynspec V311