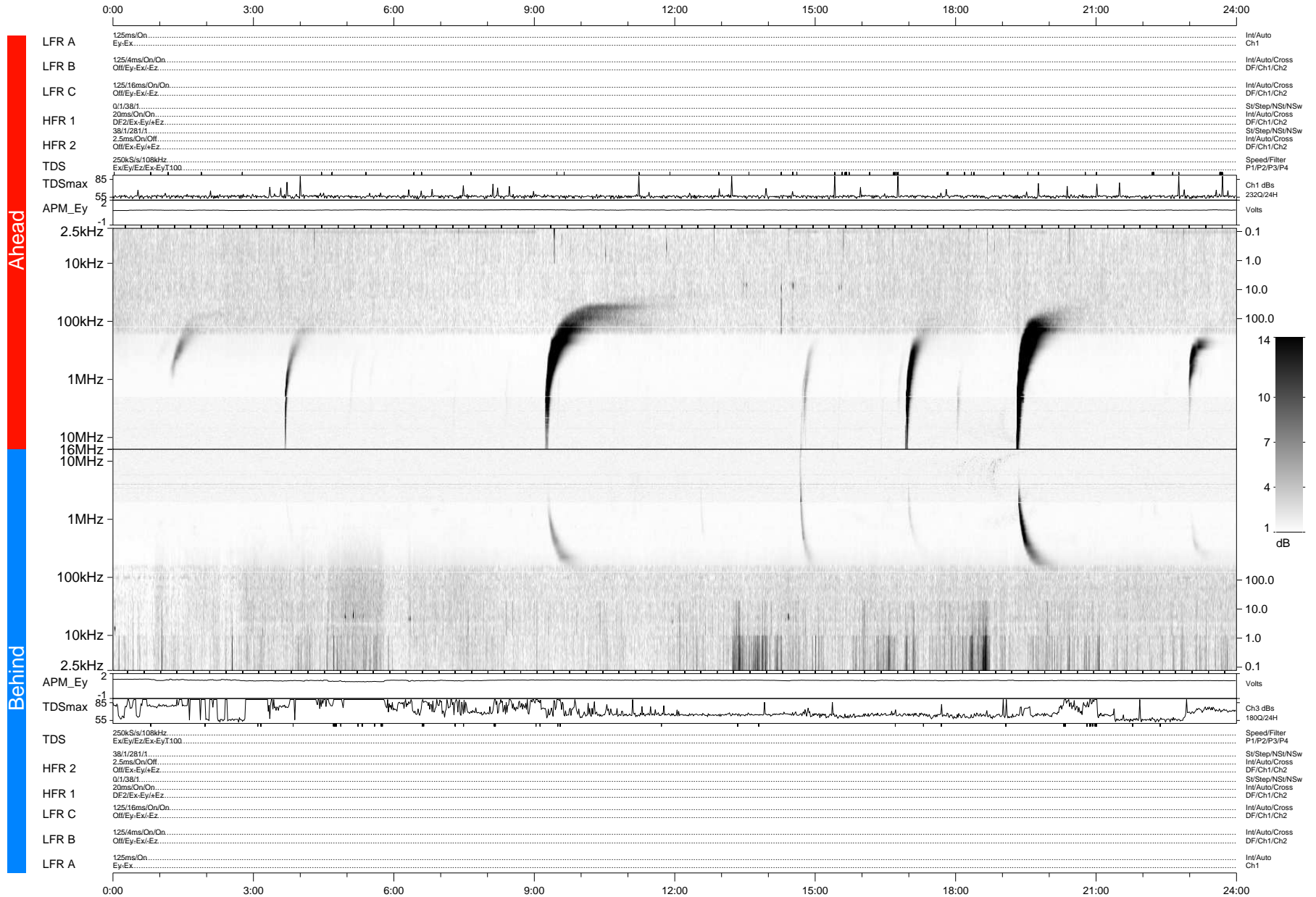


STEREO/WAVES Daily Summary - 12-Feb-2012 (DOY 043)

Ahead source file: swaves_ahead_2012_043_1_05.fin (Recovery: 100.0% HK, 100% Pkts)
 Ahead PSE Angle: 108.3°

DPU up 922.4d, V410d14



Behind PSE Angle: -116.1°
 Behind source file: swaves_behind_2012_043_1_05.fin (Recovery: 100.0% HK, 92% Pkts)

Time (UTC)

file: stereo_swaves_daily-summary_gray-status_20120212_v04 DPU up 998.2d, V410d15
 made by: space.umn.edu on macOS with IDL 8.8.2 on 2022-10-14 02:59:52, with TMLib V945 / dynspec V311