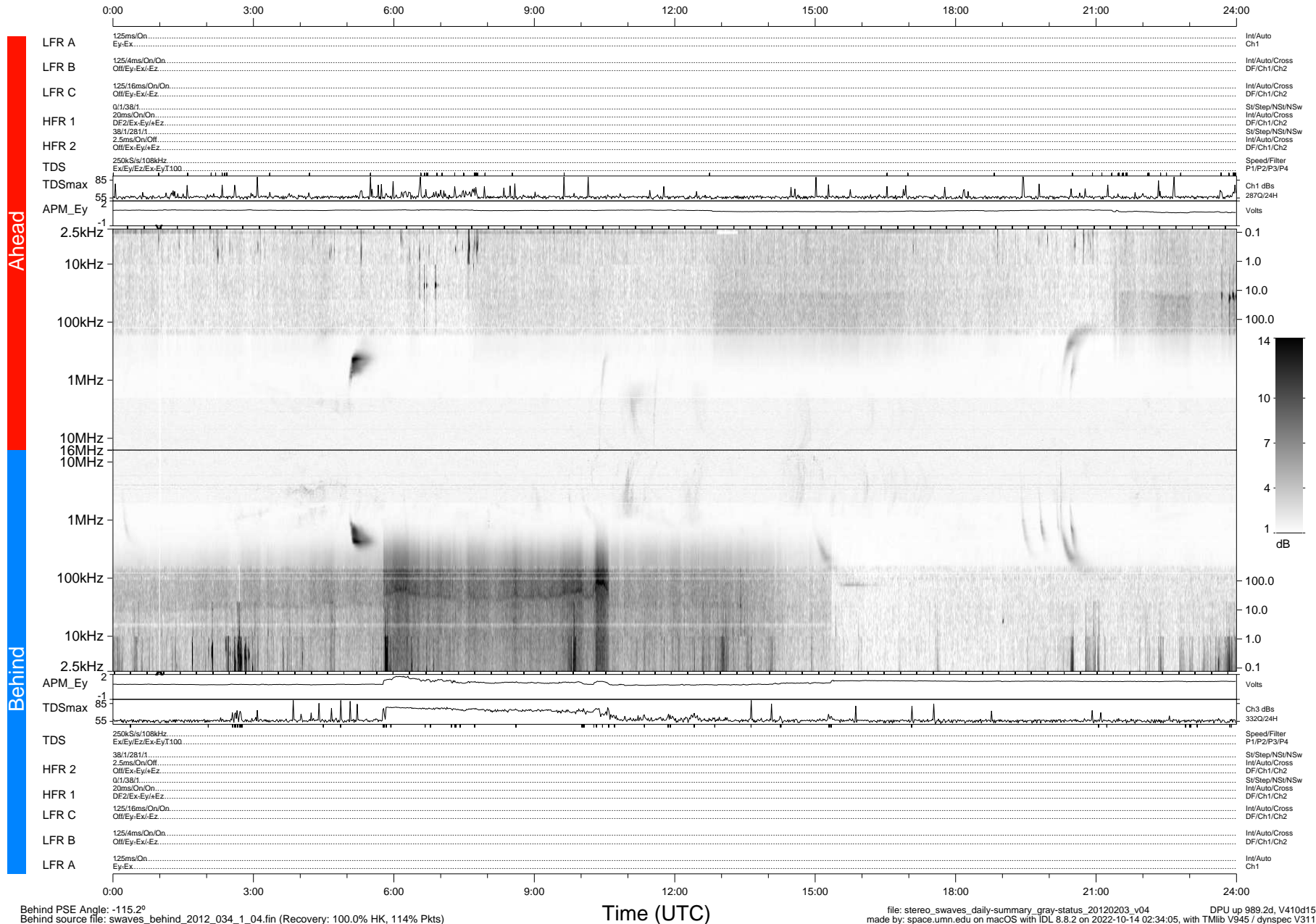


STEREO/WAVES Daily Summary - 03-Feb-2012 (DOY 034)

Ahead source file: swaves_ahead_2012_034_1_05.fin (Recovery: 100.0% HK, 108% Pkts)
 Ahead PSE Angle: 108.0°

DPU up 913.4d, V410d14



Behind PSE Angle: -115.2°
 Behind source file: swaves_behind_2012_034_1_04.fin (Recovery: 100.0% HK, 114% Pkts)

Time (UTC)

file: stereo_swaves_daily-summary_gray-status_20120203_v04 DPU up 989.2d, V410d15
 made by: space.umn.edu on macOS with IDL 8.8.2 on 2022-10-14 02:34:05, with Tlib V945 / dynspec V311