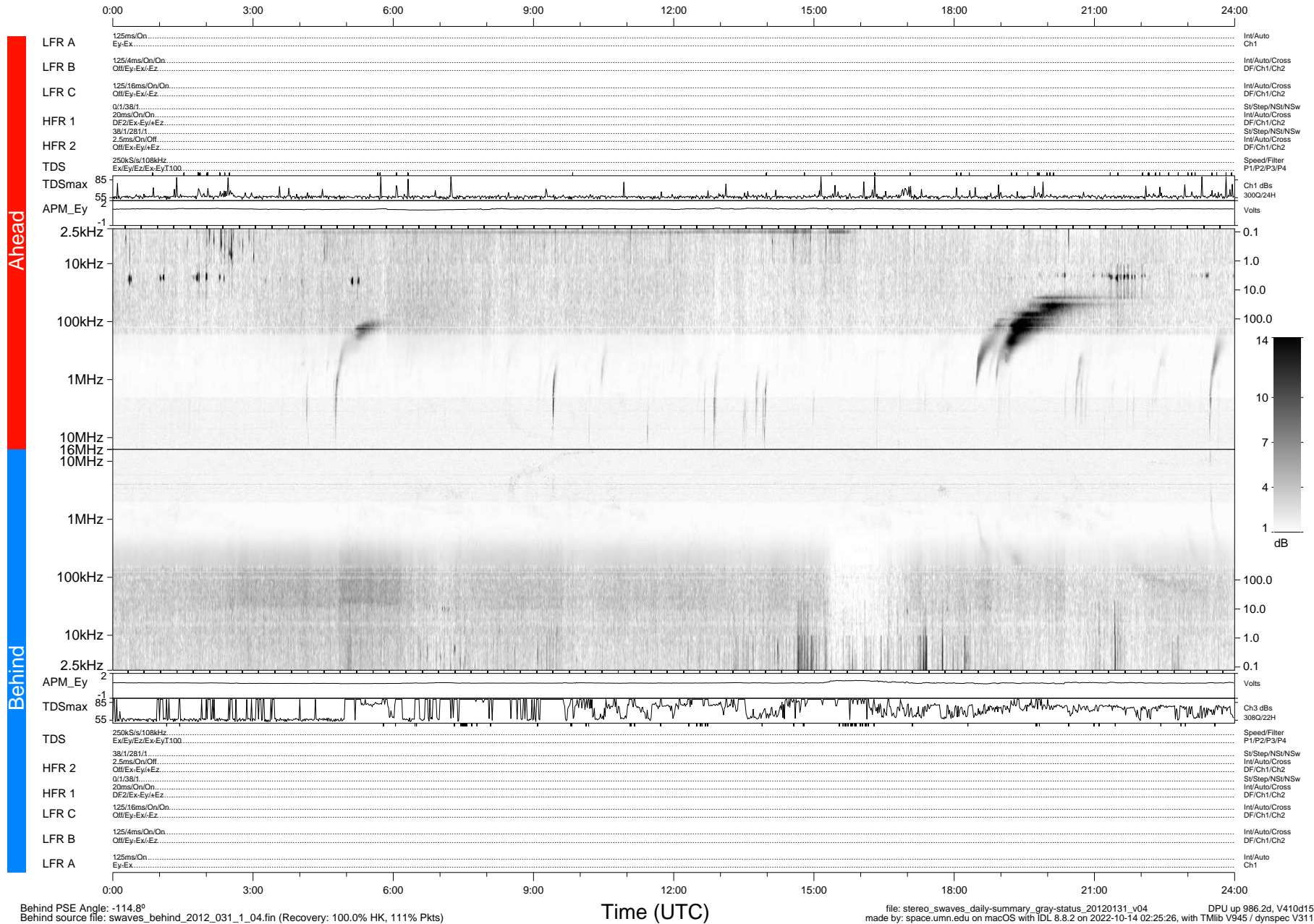


STEREO/WAVES Daily Summary - 31-Jan-2012 (DOY 031)

Ahead source file: swaves_ahead_2012_031_1_04.fin (Recovery: 100.0% HK, 110% Pkts)
 Ahead PSE Angle: 107.9°

DPU up 910.4d, V410d14



Behind PSE Angle: -114.8°
 Behind source file: swaves_behind_2012_031_1_04.fin (Recovery: 100.0% HK, 111% Pkts)

Time (UTC)

file: stereo_swaves_daily-summary_gray-status_20120131_v04
 made by: space.umn.edu on macOS with IDL 8.8.2 on 2022-10-14 02:25:26, with TMLib V945 / dynspec V311

DPU up 986.2d, V410d15