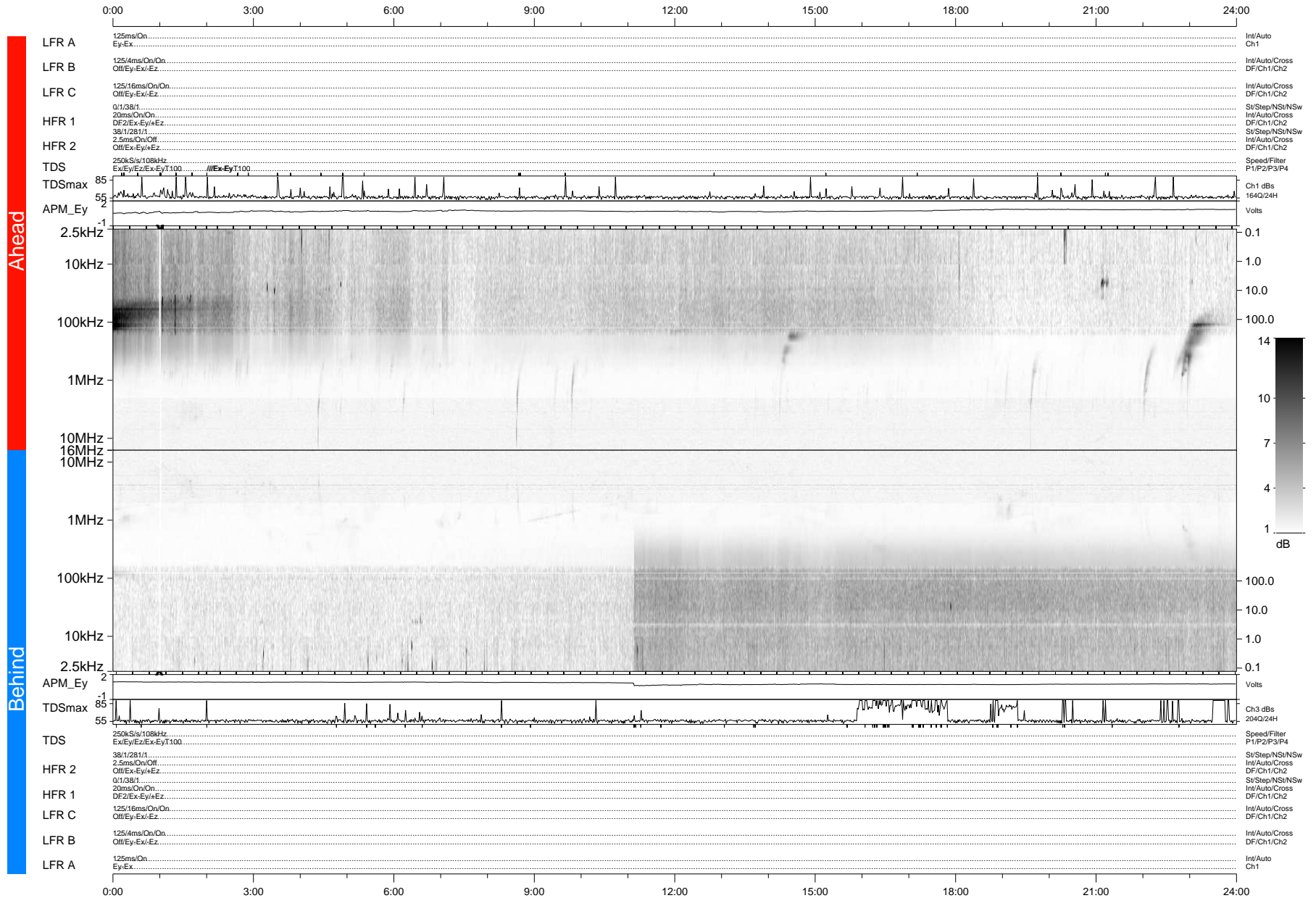


STEREO/WAVES Daily Summary - 30-Jan-2012 (DOY 030)

Ahead source file: swaves_ahead_2012_030_1_04.fin (Recovery: 100.0% HK, 89% Pkts)
 Ahead PSE Angle: 107.9°

DPU up 909.4d, V410d14



Behind PSE Angle: -114.8°
 Behind source file: swaves_behind_2012_030_1_04.fin (Recovery: 100.0% HK, 95% Pkts)

Time (UTC)

file: stereo_swaves_daily-summary_gray-status_20120130_v04
 made by: space.umn.edu on macOS with IDL 8.8.2 on 2022-10-14 02:22:30, with Tlib V945 / dynspec V311

DPU up 985.2d, V410d15