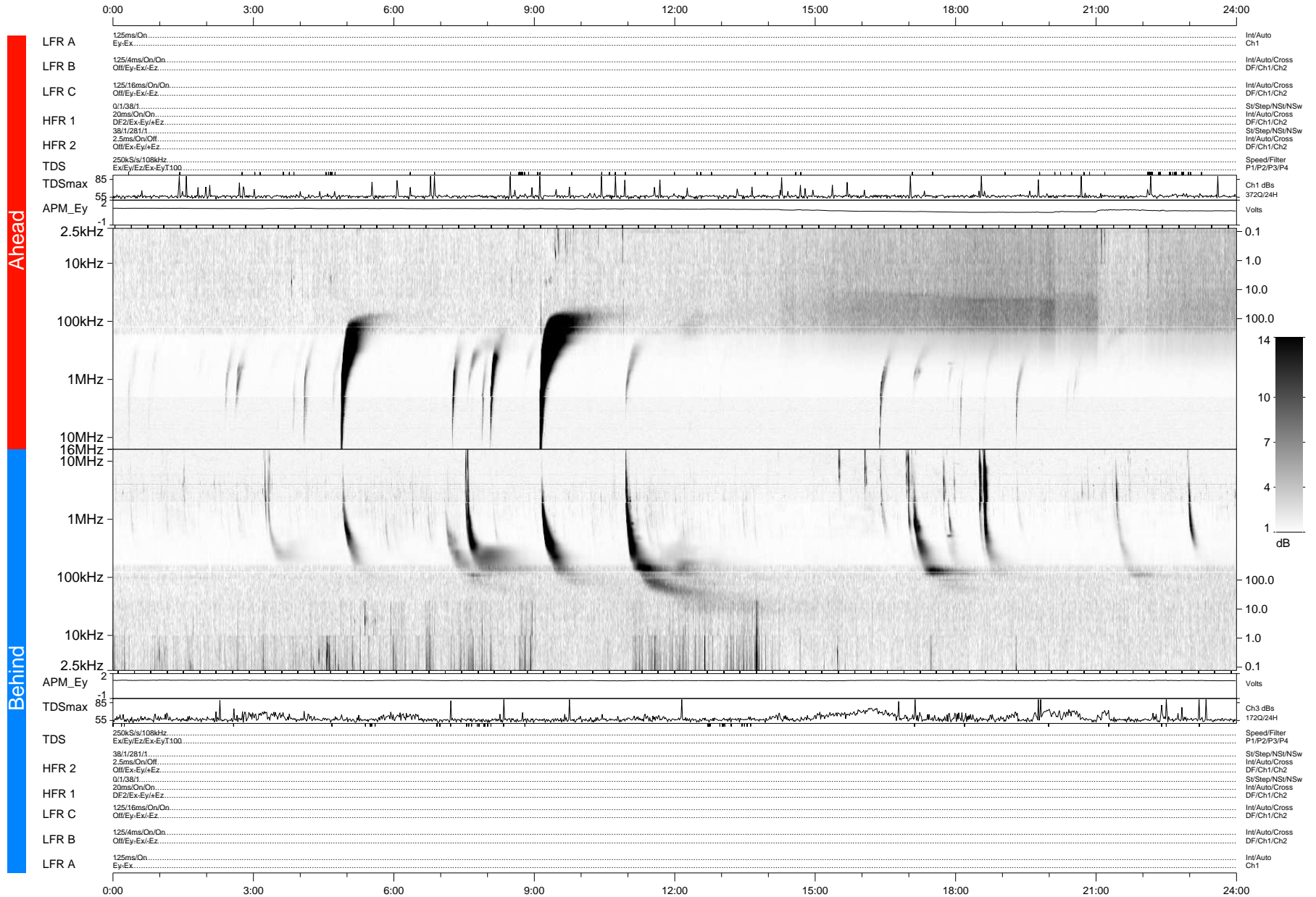


# STEREO/WAVES Daily Summary - 13-Jan-2012 (DOY 013)

Ahead source file: swaves\_ahead\_2012\_013\_1\_04.fin (Recovery: 100.0% HK, 120% Pkts)  
 Ahead PSE Angle: 107.4°

DPU up 892.4d, V410d14



Behind PSE Angle: -112.6°  
 Behind source file: swaves\_behind\_2012\_013\_1\_05.fin (Recovery: 100.0% HK, 91% Pkts)

Time (UTC)

file: stereo\_swaves\_daily-summary\_gray-status\_20120113\_v04 DPU up 968.2d, V410d15  
 made by: space.umn.edu on macOS with IDL 8.8.2 on 2022-10-14 01:33:42, with Tmlib V945 / dynspec V311