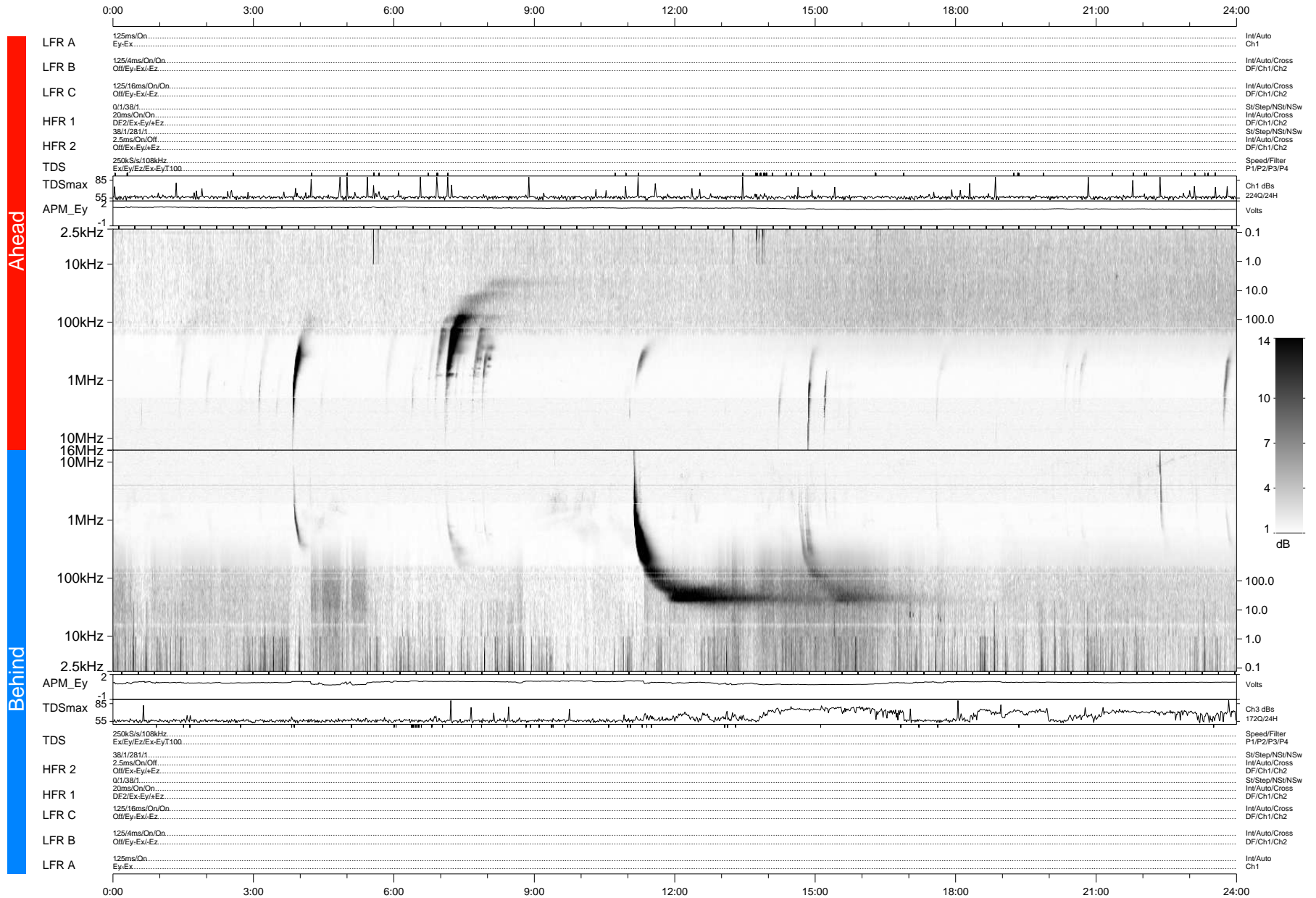


# STEREO/WAVES Daily Summary - 11-Jan-2012 (DOY 011)

Ahead source file: swaves\_ahead\_2012\_011\_1\_05.fin (Recovery: 100.0% HK, 99% Pkts)  
 Ahead PSE Angle: 107.3°

DPU up 890.4d, V410d14



Behind PSE Angle: -112.4°  
 Behind source file: swaves\_behind\_2012\_011\_1\_04.fin (Recovery: 100.0% HK, 91% Pkts)

Time (UTC)

file: stereo\_swaves\_daily-summary\_gray-status\_20120111\_v04  
 made by: space.umn.edu on macOS with IDL 8.8.2 on 2022-10-14 01:27:54, with TMLib V945 / dynspec V311

DPU up 966.2d, V410d15