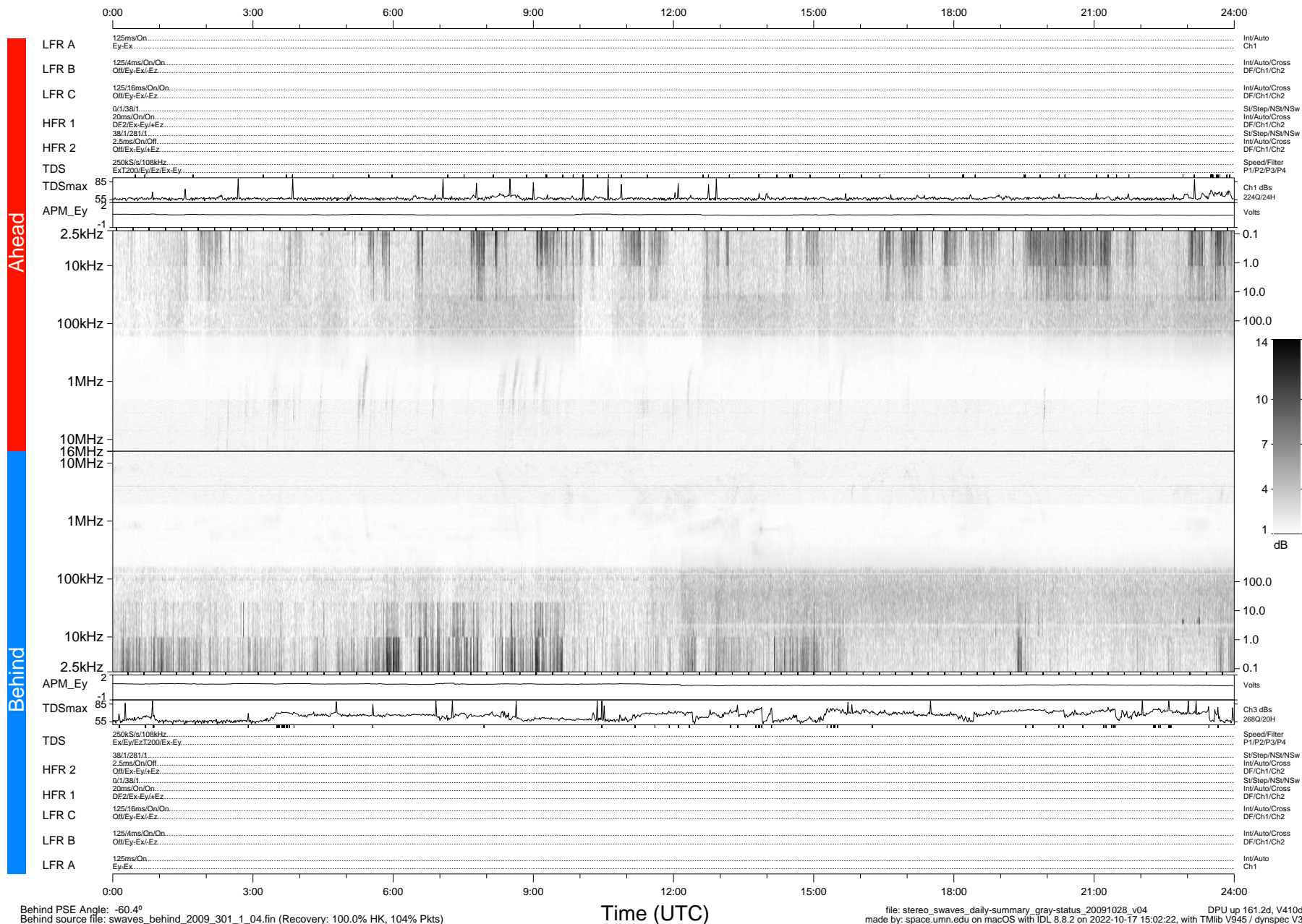


STEREO/WAVES Daily Summary - 28-Oct-2009 (DOY 301)

Ahead source file: swaves_ahead_2009_301_1_04.fin (Recovery: 100.0% HK, 99% Pkts)
 Ahead PSE Angle: 62.6°

DPU up 85.4d, V410d12



Behind PSE Angle: -60.4°
 Behind source file: swaves_behind_2009_301_1_04.fin (Recovery: 100.0% HK, 104% Pkts)