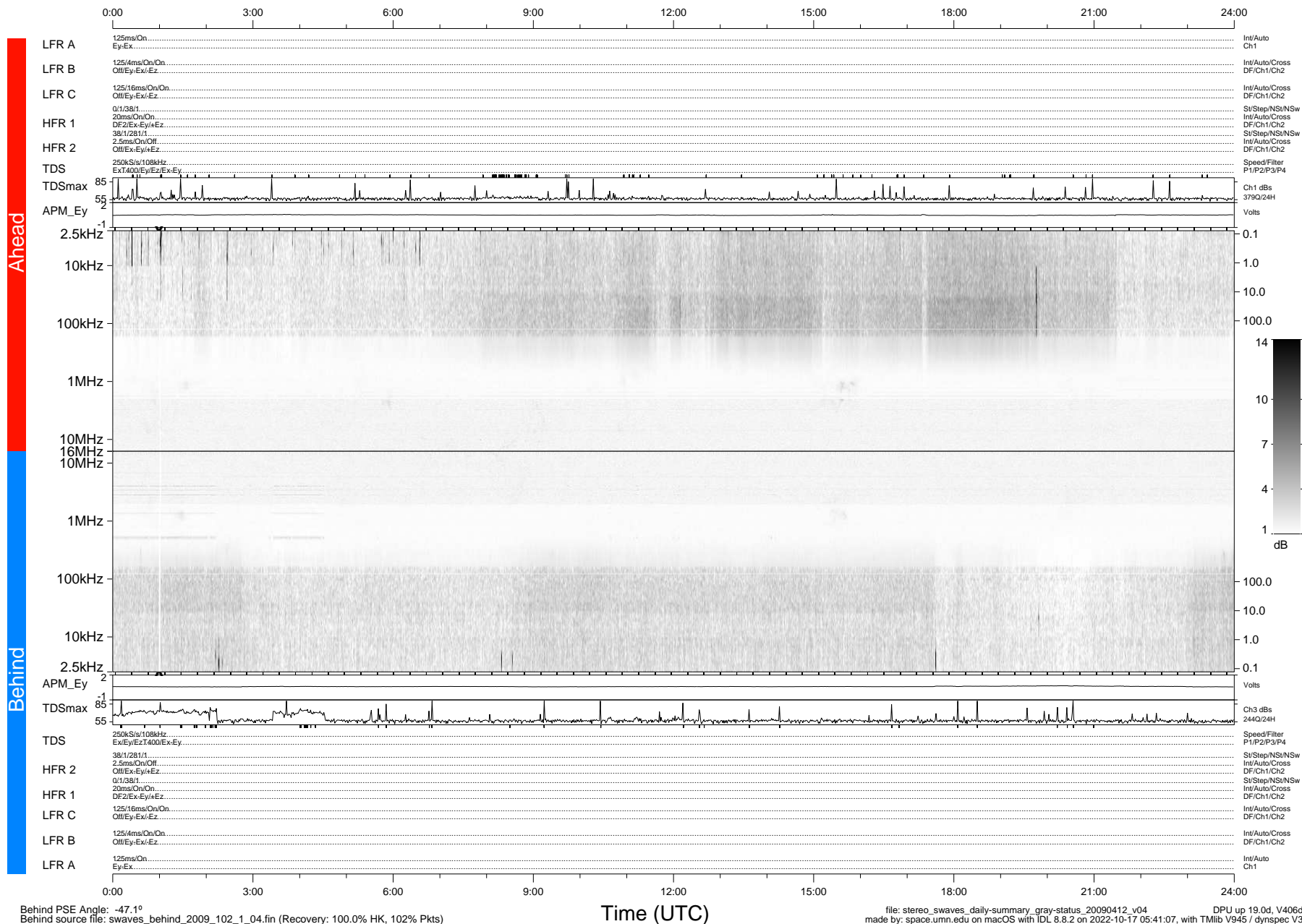


STEREO/WAVES Daily Summary - 12-Apr-2009 (DOY 102)

Ahead source file: swaves_ahead_2009_102_1_04.fin (Recovery: 100.0% HK, 122% Pkts)
 Ahead PSE Angle: 46.2°

DPU up 17.4d, V408d10



Behind PSE Angle: -47.1°
 Behind source file: swaves_behind_2009_102_1_04.fin (Recovery: 100.0% HK, 102% Pkts)

file: stereo_swaves_daily-summary_gray-status_20090412_v04
 made by: space.umn.edu on macOS with IDL 8.8.2 on 2022-10-17 05:41:07, with TMLib V945 / dynspec V311
 DPU up 19.0d, V406d11