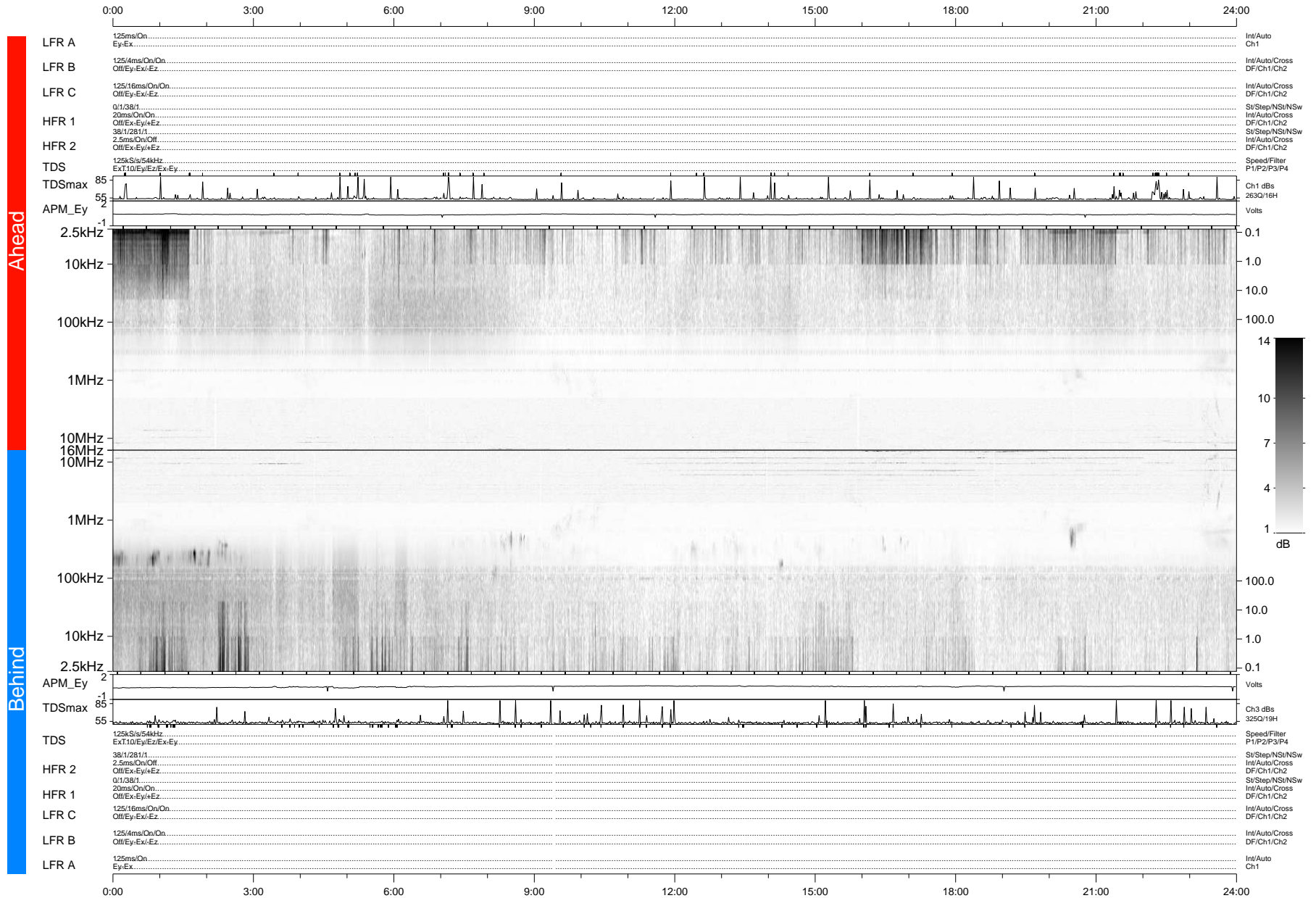


STEREO/WAVES Daily Summary - 11-Apr-2007 (DOY 101)

Ahead source file: swaves_ahead_2007_101_1_06.fin (Recovery: 99.8% HK, 98% Pkts)
 Ahead PSE Angle: 2.9°

DPU up 166.2d, V374d1



Behind PSE Angle: -1.0°
 Behind source file: swaves_behind_2007_101_1_04.fin (Recovery: 99.7% HK, 108% Pkts)

Time (UTC)

file: stereo_swaves_daily-summary_gray-status_20070411_v04 DPU up 166.3d, V374d1
 made by: space.umn.edu on macOS with IDL 8.8.2 on 2022-10-19 06:31:13, with TMIlib V945 / dynspec V311