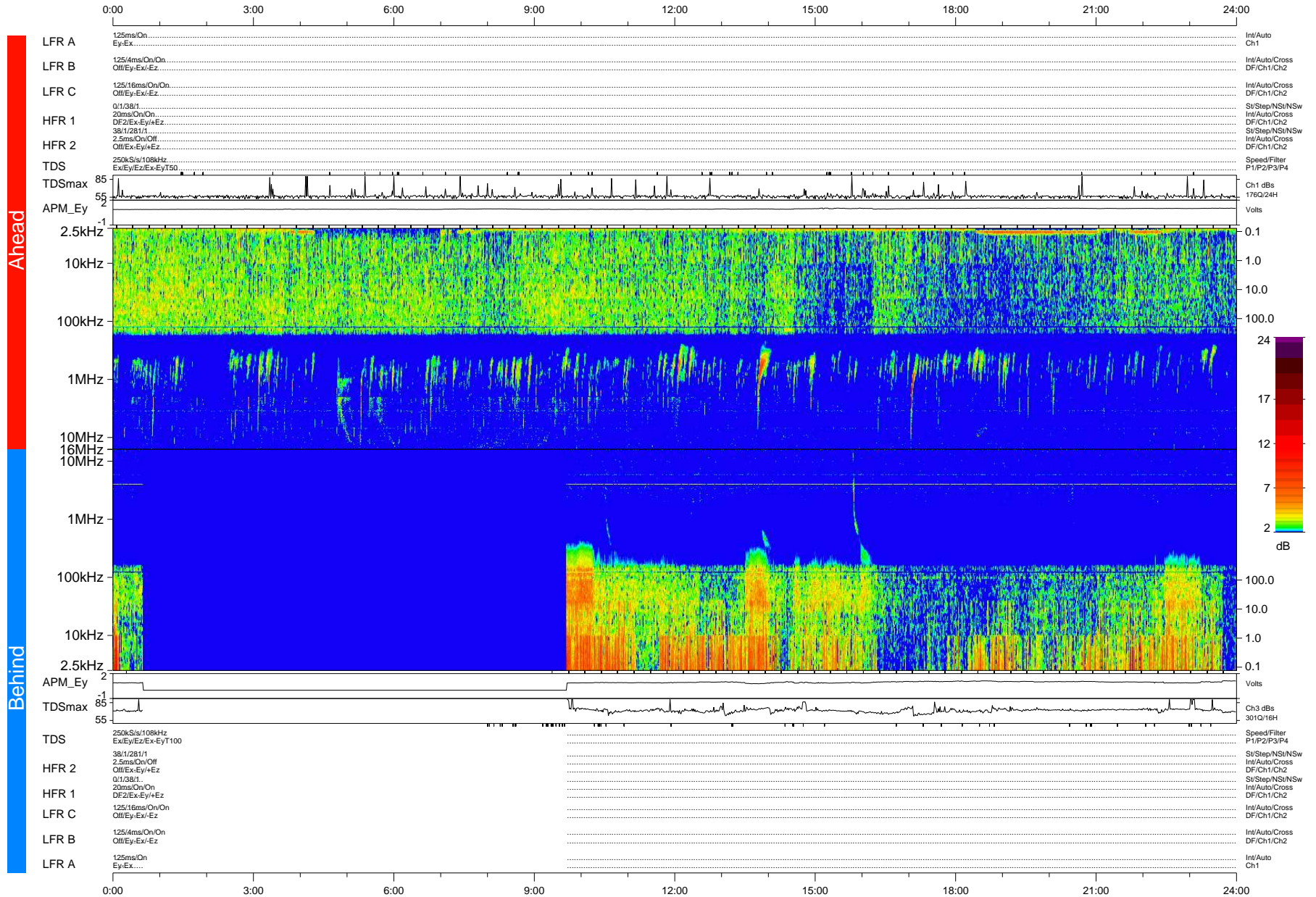


STEREO/WAVES Daily Summary - 01-Nov-2012 (DOY 306)

Ahead source file: swaves_ahead_2012_306_1_04.fin (Recovery: 100.0% HK, 92% Pkts)
 Ahead PSE Angle: 127.0°

DPU up 17.4d, V412d16



Behind PSE Angle: -122.1°
 Behind source file: swaves_behind_2012_306_1_04.fin (Recovery: 62.3% HK, 86% Pkts)

Time (UTC)

file: stereo_swaves_daily-summary_color-status_20121101_v04 DPU up 103.5d, V410d15
 made by: space.umn.edu on macOS with IDL 8.8.2 on 2022-10-14 15:25:39, with Tmlib V945 / dynspec V311