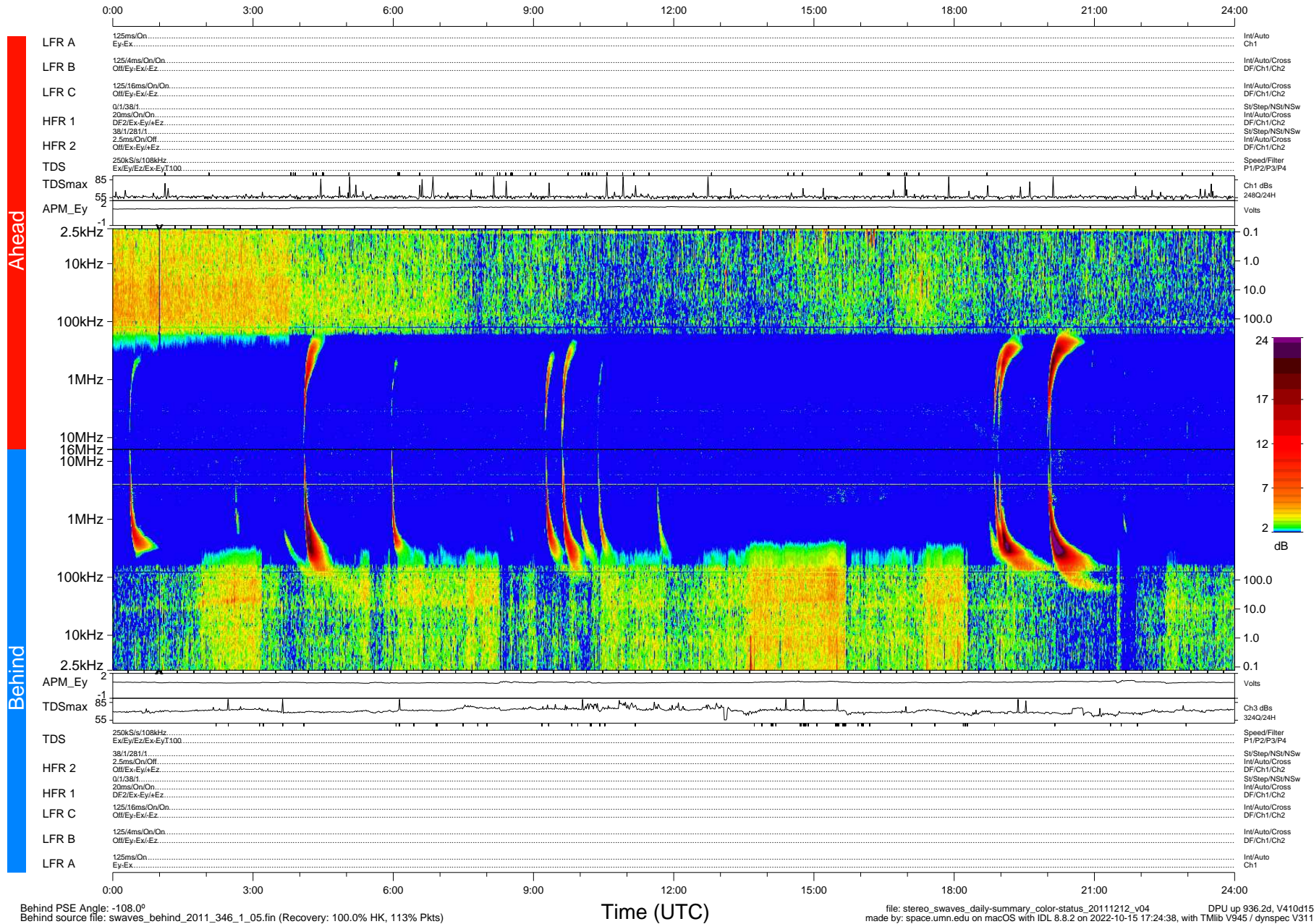


STEREO/WAVES Daily Summary - 12-Dec-2011 (DOY 346)

Ahead source file: swaves_ahead_2011_346_1_04.fin (Recovery: 100.0% HK, 102% Pkts)
 Ahead PSE Angle: 106.6°

DPU up 860.4d, V410d14



Behind PSE Angle: -108.0°
 Behind source file: swaves_behind_2011_346_1_05.fin (Recovery: 100.0% HK, 113% Pkts)

file: stereo_swaves_daily-summary_color-status_20111212_v04
 made by: space.umn.edu on macOS with IDL 8.8.2 on 2022-10-15 17:24:38, with TMLib V945 / dynspec V311
 DPU up 936.2d, V410d15