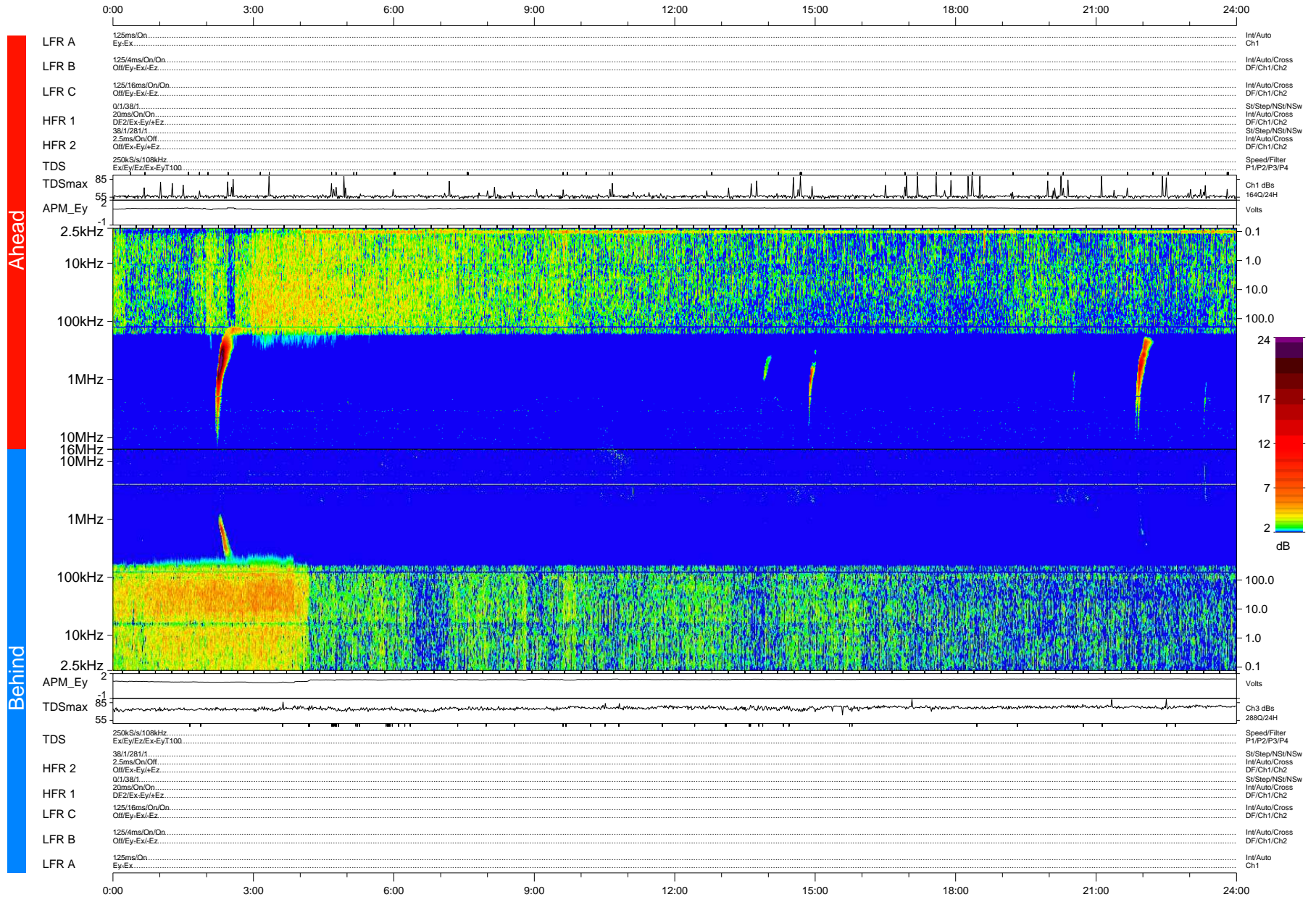


STEREO/WAVES Daily Summary - 29-Nov-2011 (DOY 333)

Ahead source file: swaves_ahead_2011_333_1_04.fin (Recovery: 100.0% HK, 90% Pkts)
 Ahead PSE Angle: 106.3°

DPU up 847.4d, V410d14



Behind PSE Angle: -105.9°
 Behind source file: swaves_behind_2011_333_1_04.fin (Recovery: 100.1% HK, 108% Pkts)

Time (UTC)

file: stereo_swaves_daily-summary_color-status_20111129_v04
 DPU up 923.2d, V410d15
 made by: space.umn.edu on macOS with IDL 8.8.2 on 2022-10-15 16:47:42, with TMLib V945 / dynspec V311