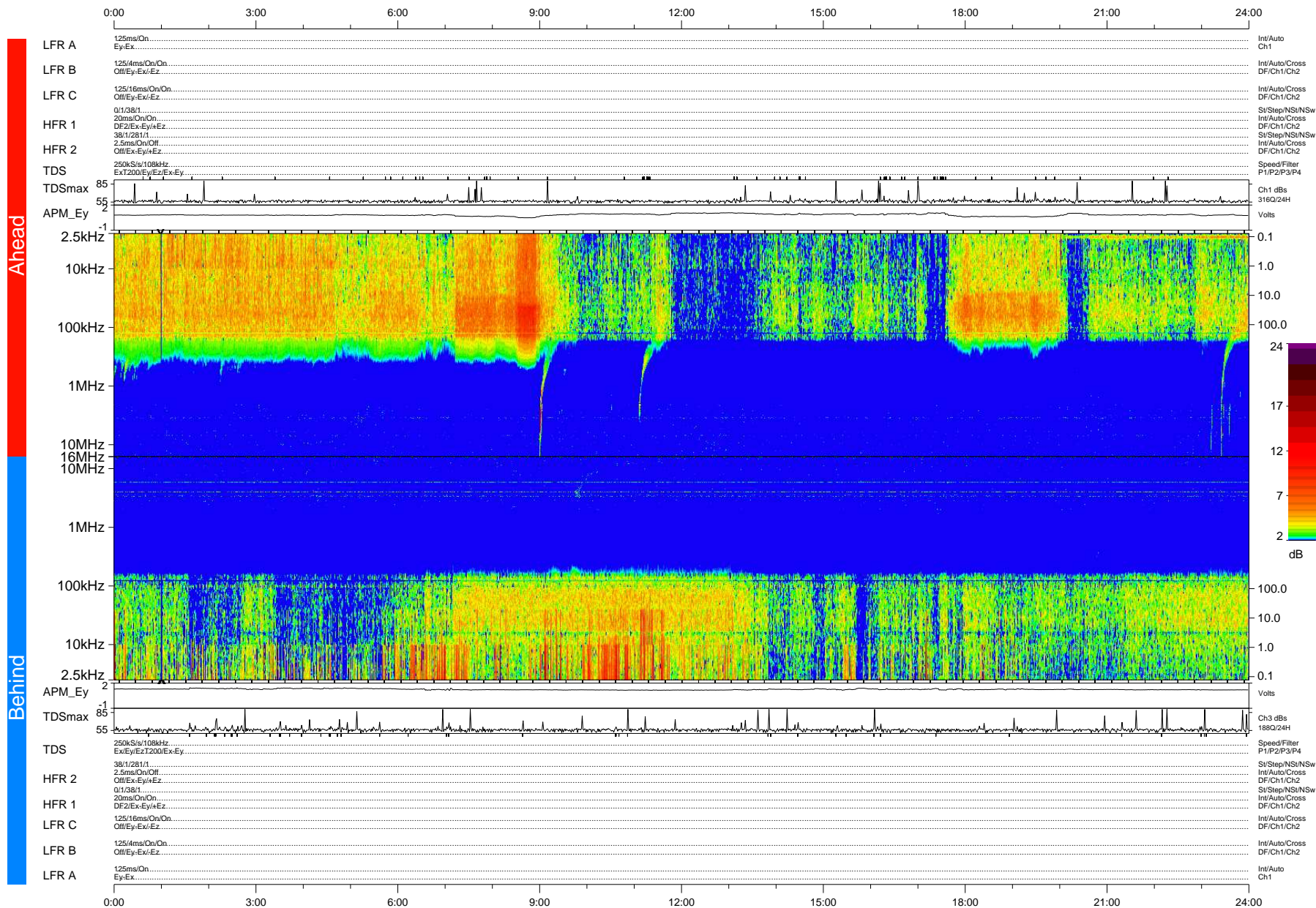


STEREO/WAVES Daily Summary - 28-Apr-2011 (DOY 118)

Ahead source file: swaves_ahead_2011_118_1_04.fin (Recovery: 100.0% HK, 112% Pkts)
 Ahead PSE Angle: 91.2°

DPU up 632.4d, V410d12



Behind PSE Angle: -94.5°
 Behind source file: swaves_behind_2011_118_1_04.fin (Recovery: 100.0% HK, 93% Pkts)

Time (UTC)

file: stereo_swaves_daily-summary_color-status_20110428_v04 DPU up 708.2d, V410d13
 made by: space.umn.edu on macOS with IDL 8.8.2 on 2022-10-15 06:39:17, with Tmlib V945 / dynspec V311