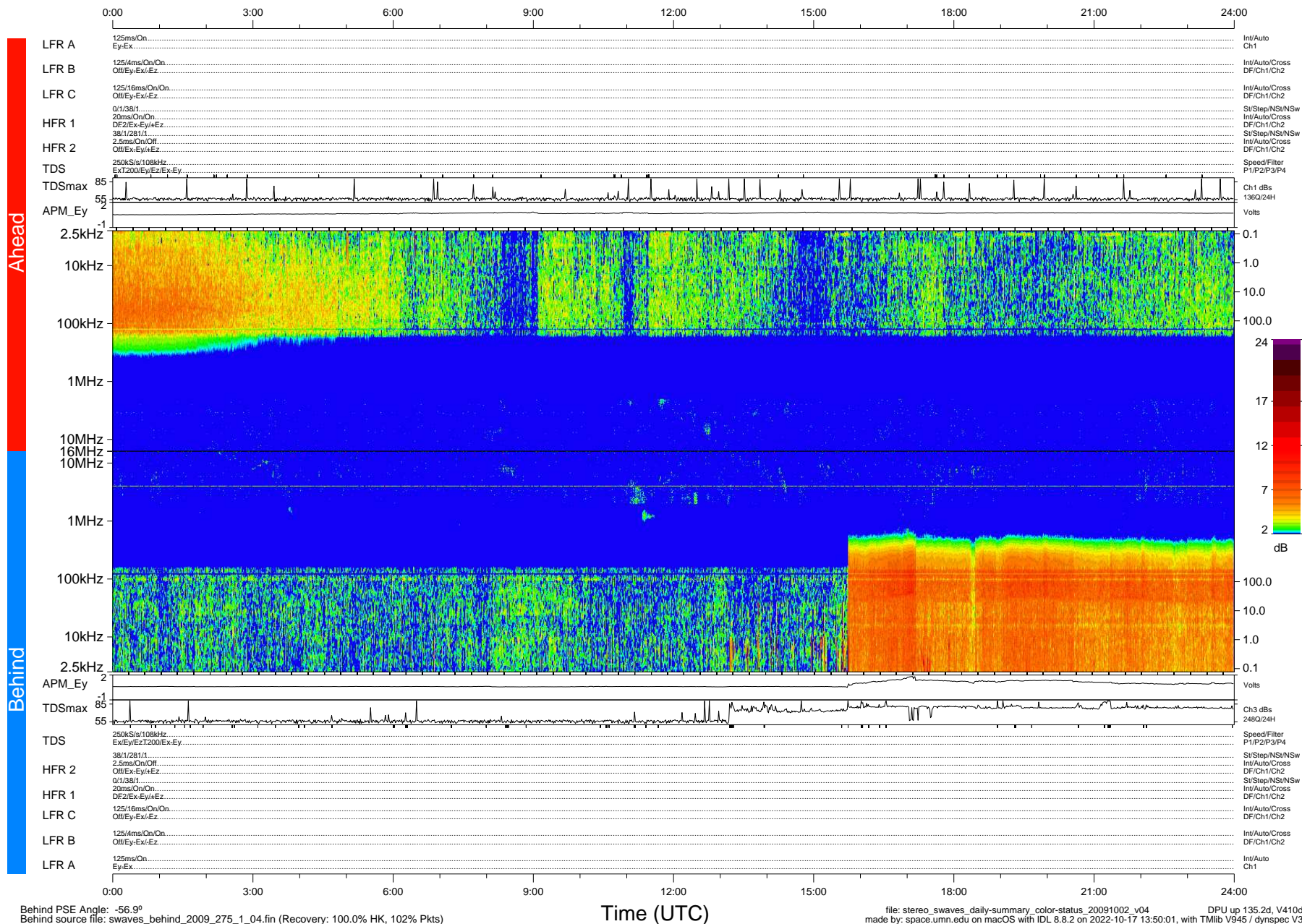


STEREO/WAVES Daily Summary - 02-Oct-2009 (DOY 275)

Ahead source file: swaves_ahead_2009_275_1_04.fin (Recovery: 100.0% HK, 86% Pkts)
 Ahead PSE Angle: 61.4°

DPU up 59.4d, V410d12



Behind PSE Angle: -56.9°
 Behind source file: swaves_behind_2009_275_1_04.fin (Recovery: 100.0% HK, 102% Pkts)

DPU up 135.2d, V410d13