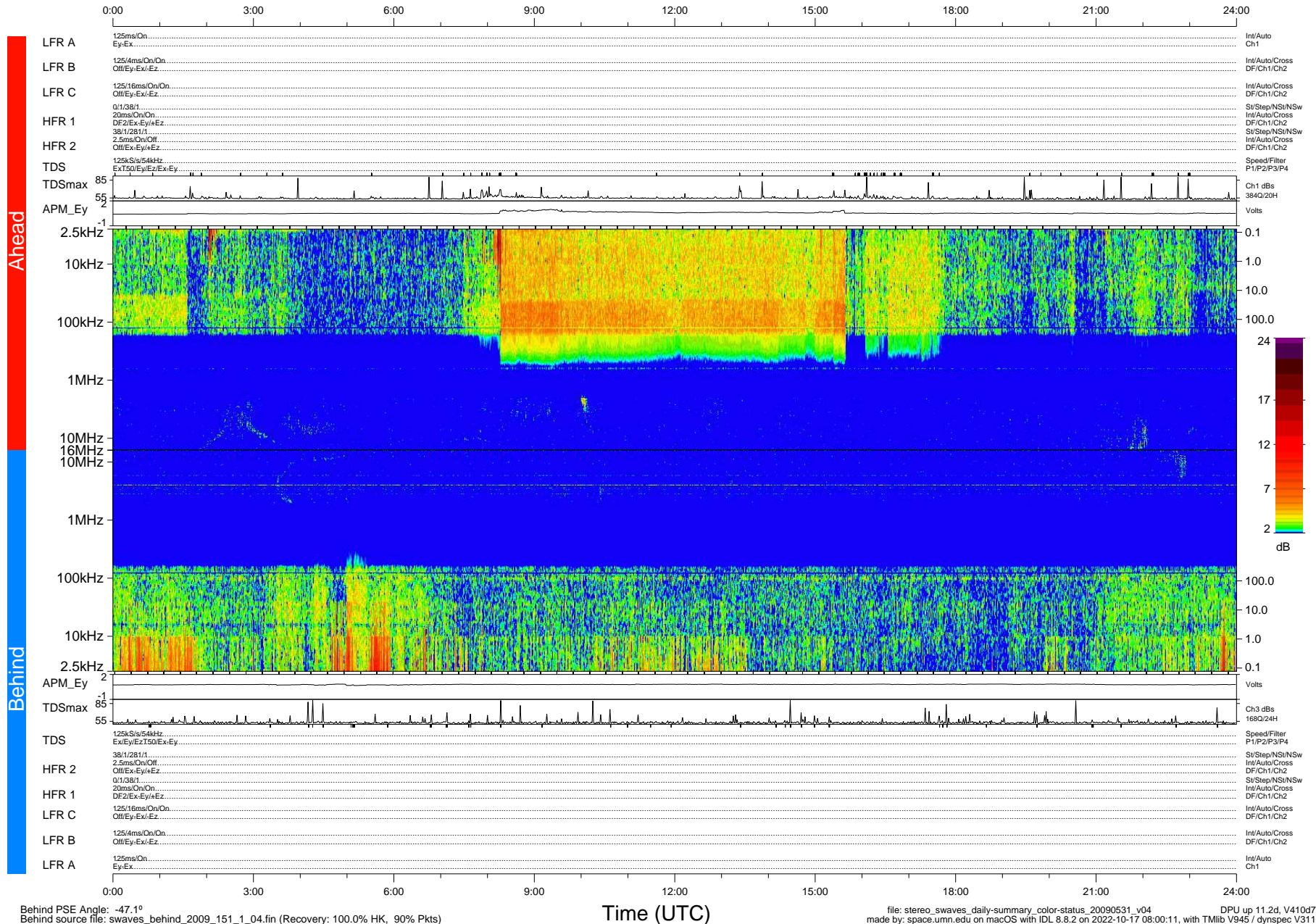


STEREO/WAVES Daily Summary - 31-May-2009 (DOY 151)

Ahead source file: swaves_ahead_2009_151_1_04.fin (Recovery: 100.0% HK, 121% Pkts)
 Ahead PSE Angle: 50.4°

DPU up 11.1d, V410d6



Behind PSE Angle: -47.1°
 Behind source file: swaves_behind_2009_151_1_04.fin (Recovery: 100.0% HK, 90% Pkts)