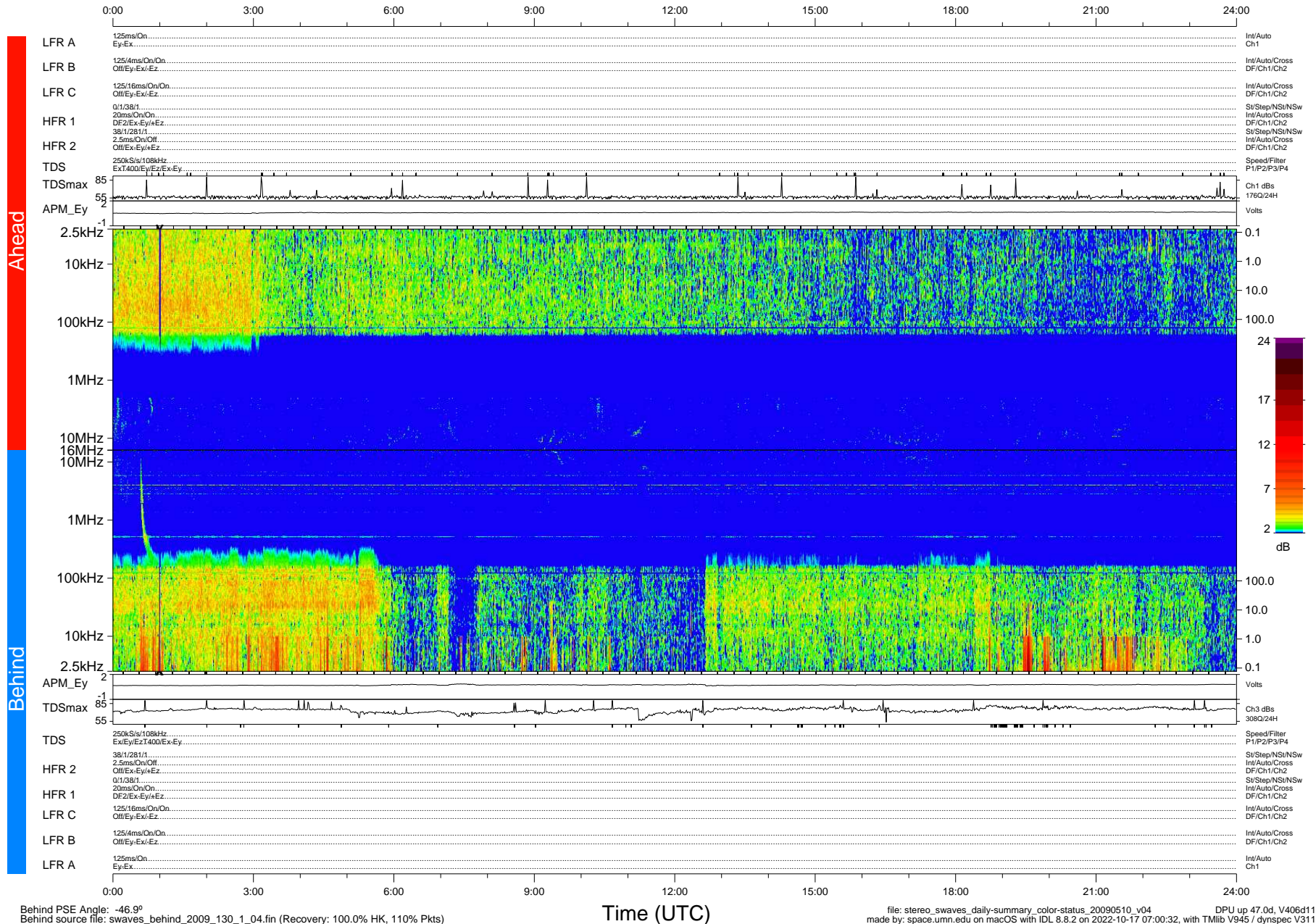


STEREO/WAVES Daily Summary - 10-May-2009 (DOY 130)

Ahead source file: swaves_ahead_2009_130_1_05.fin (Recovery: 100.0% HK, 91% Pkts)
 Ahead PSE Angle: 48.4°

DPU up 45.4d, V408d10



Behind PSE Angle: -46.9°
 Behind source file: swaves_behind_2009_130_1_04.fin (Recovery: 100.0% HK, 110% Pkts)