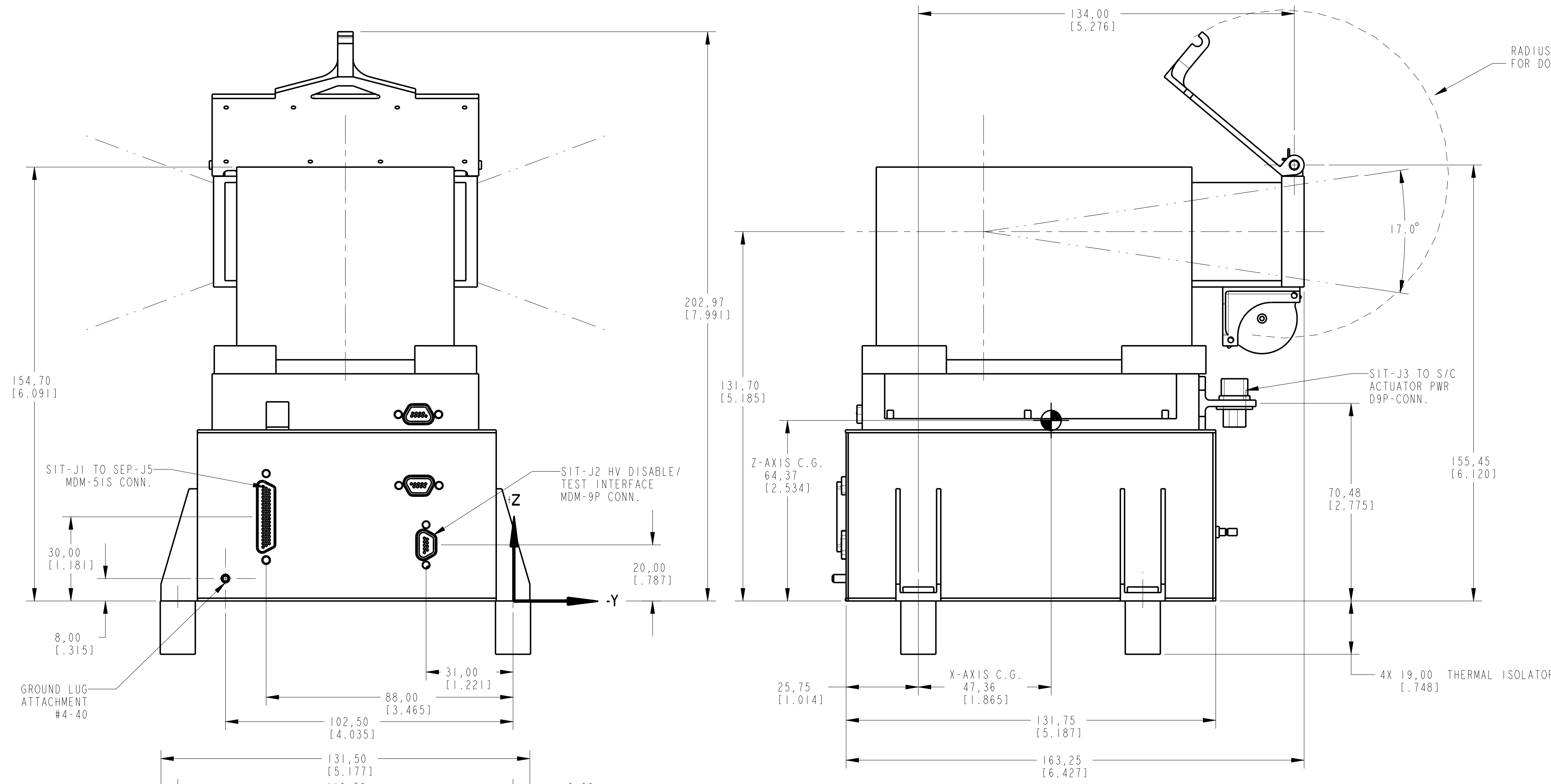
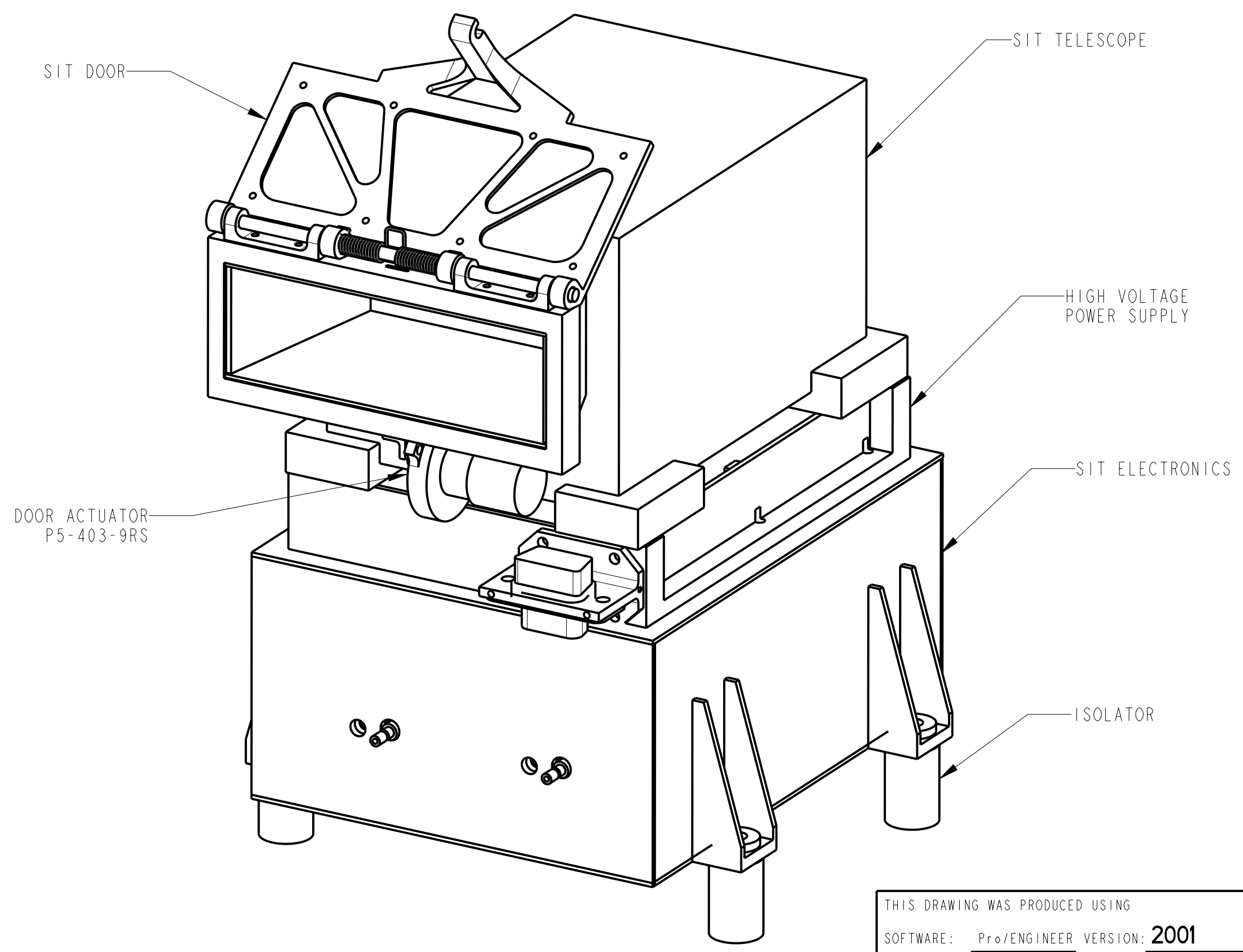
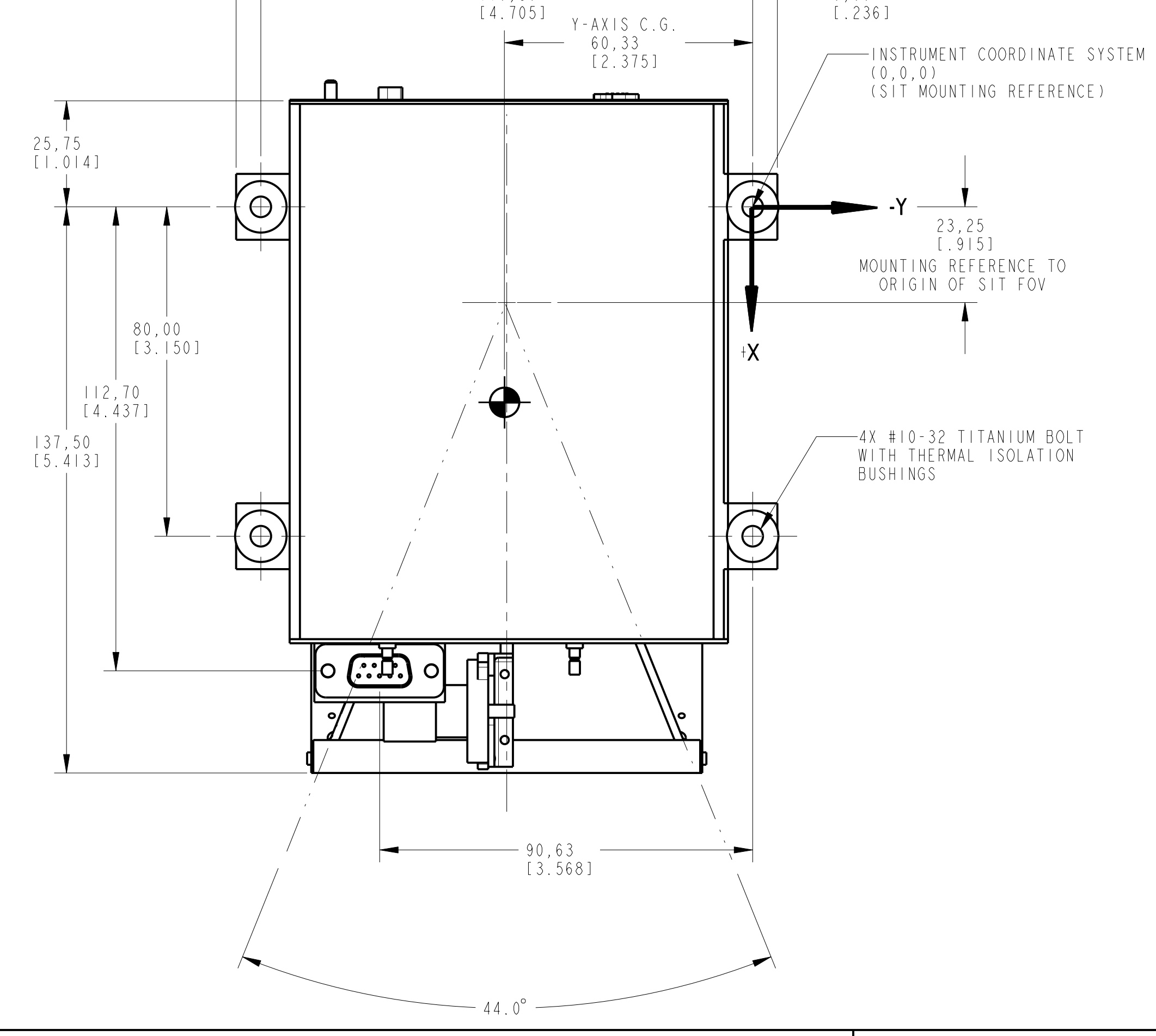


REVISION				
SYM	ZONE	DESCRIPTION	DATE	APPROVAL
A	-	REVISED MASS PROPERTIES; REMOVED ALL SPACECRAFT REFERENCES; AND REMOVED SHEETS 2 & 3.	11-19-02	-



NOTES: UNLESS OTHERWISE NOTED

- ALL DIMENSIONS ARE SHOWN AS MILLIMETERS [INCHES].
- CALCULATED EXPERIMENT MASS = 1.4604938e+03 GRAM
- CALCULATIONS FOR MASS PROPERTIES.
 CENTER OF GRAVITY W/ RESPECT TO INSTRUMENT COORDINATE SYSTEM:
 X Y Z 4.7355824e+01 6.0326086e+01 6.4373024e+01 MM
 INERTIA W/ RESPECT TO INSTRUMENT COORDINATE SYSTEM: (GRAM * MM^2)
 INERTIA TENSOR:
 Ixx Ixy Ixz 1.6010205e+07 -4.2134169e+06 -4.8372990e+06
 Iyx Iyy Iyz -4.2134169e+06 1.5167054e+07 -5.6683469e+06
 Izx Izv Izz -4.8372990e+06 -5.6683469e+06 1.2633904e+07
 INERTIA AT CENTER OF GRAVITY W/ RESPECT TO INSTRUMENT COORDINATE SYSTEM: (GRAM * MM^2)
 INERTIA TENSOR:
 Ixx Ixy Ixz 4.6430019e+06 -4.1090522e+04 -3.8507464e+05
 Iyx Iyy Iyz -4.1090522e+04 5.8396684e+06 3.2948731e+03
 Izx Izv Izz -3.8507464e+05 3.2948731e+03 4.0435553e+06
 PRINCIPAL MOMENTS OF INERTIA: (GRAM * MM^2)
 I1 I2 I3 3.8551919e+06 4.8297935e+06 5.8412402e+06
 NOTE: THESE ARE INSTRUMENT COORDINATES, NOT S/C COORDINATES.
- INSTRUMENT WILL BE MOUNTED TO SPACECRAFT ON THERMALLY ISOLATING ULTEM BUSHINGS AND HELD TO SPACECRAFT PANEL WITH (4) 10-32UNF TITANIUM BOLTS, TORQUED TO TBD.
- INSTRUMENT FIELD OF VIEW ARE TO BE KEPT CLEAR FROM OBSTRUCTIONS WITHOUT PRIOR CONSENT FROM THE INSTRUMENT TEAM.
- PURGE WILL BE SUPPLIED BY THE SEP MAIN ELECTRONICS ASSEMBLY.
- HV DISABLE/ TEST INTERFACE CONN. SIT-J2 WILL HAVE A RED TAG AND GREEN TAG COVER TO BE SWAPPED PRIOR TO THERMAL-VAC.



DIMENSIONS ARE IN MILLIMETERS

ITEM NO.	REQD	REQD	PART NO.	DESCRIPTION	MATERIAL	MATERIAL SPEC & NO.
LIST OF MATERIAL						
TOLERANCES:				Goddard Space Flight Center		
.XX	.XXX	≤ FRACTIONS		Greenbelt, Maryland		
±0.10	±0.05	±0.5 ± 1/16		DRAWING INTERPRETED PER GSFC-4673-64-1		
REMOVE ALL BURRS AND SHARP EDGES R.010 OR CHAMFER MAX.				DESIGNER	INIT.	DATE
<input checked="" type="checkbox"/> FLIGHT HARDWARE	<input type="checkbox"/> NON-FLIGHT		SHUMAN			TITLE
<input type="checkbox"/> HARDNESS TEST NOT REQUIRED			DRAWN			INTERFACE CONTROL DRAWING SEP MAIN INSTRUMENT STEREO SPACECRAFT
<input type="checkbox"/> TEST HARDNESS PER ASTM E-18, LOCATION OPTIONAL			SHUMAN			
<input type="checkbox"/> TEST HARDNESS PER ASTM E-18 WHERE INDICATED ON FIELD OF DRAWING THUS			CHECKED			
<input type="checkbox"/> NO NON-DESTRUCTIVE EXAMINATION (NDE) REQ'D			YonROSEVINGE			
<input type="checkbox"/> NDE REQUIRED PER S-313-009 CODE			APPROVED			GD
THIS DRAWING WAS PRODUCED USING				APPROVED-STRESS		2053410
SOFTWARE: Pro/ENGINEER VERSION: 2001			APPROVED-ENGINEER			A
FILE NAME: 2053410						GD
MODEL NAME: SIT-DELIVERABLE						2053410
			STEREO S/C			A
			NEXT ASSEMBLY	USED ON		CODE: 663 SCALE: 1.00 WEIGHT: SHEET: 1 OF 1

GD2053410