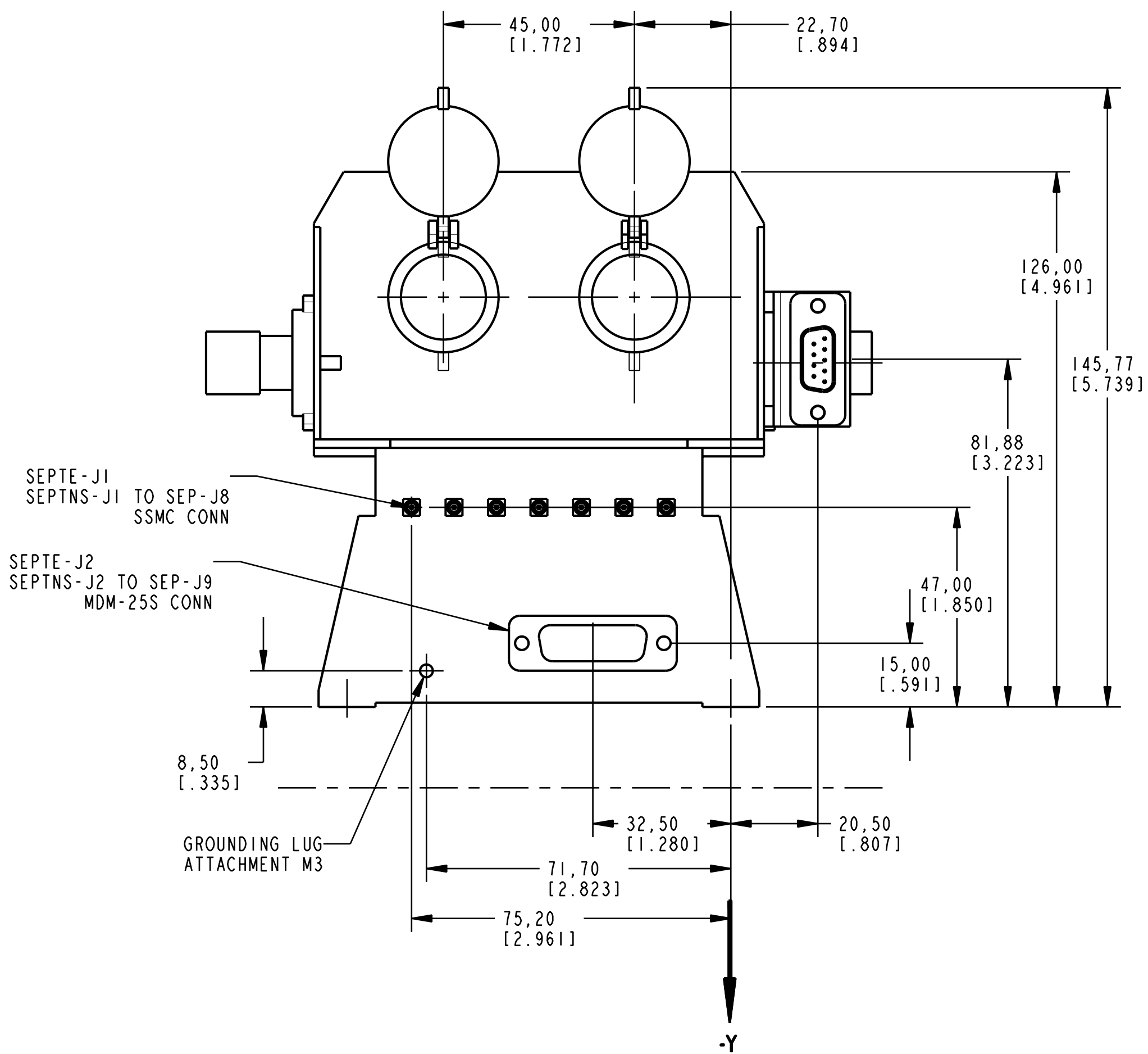
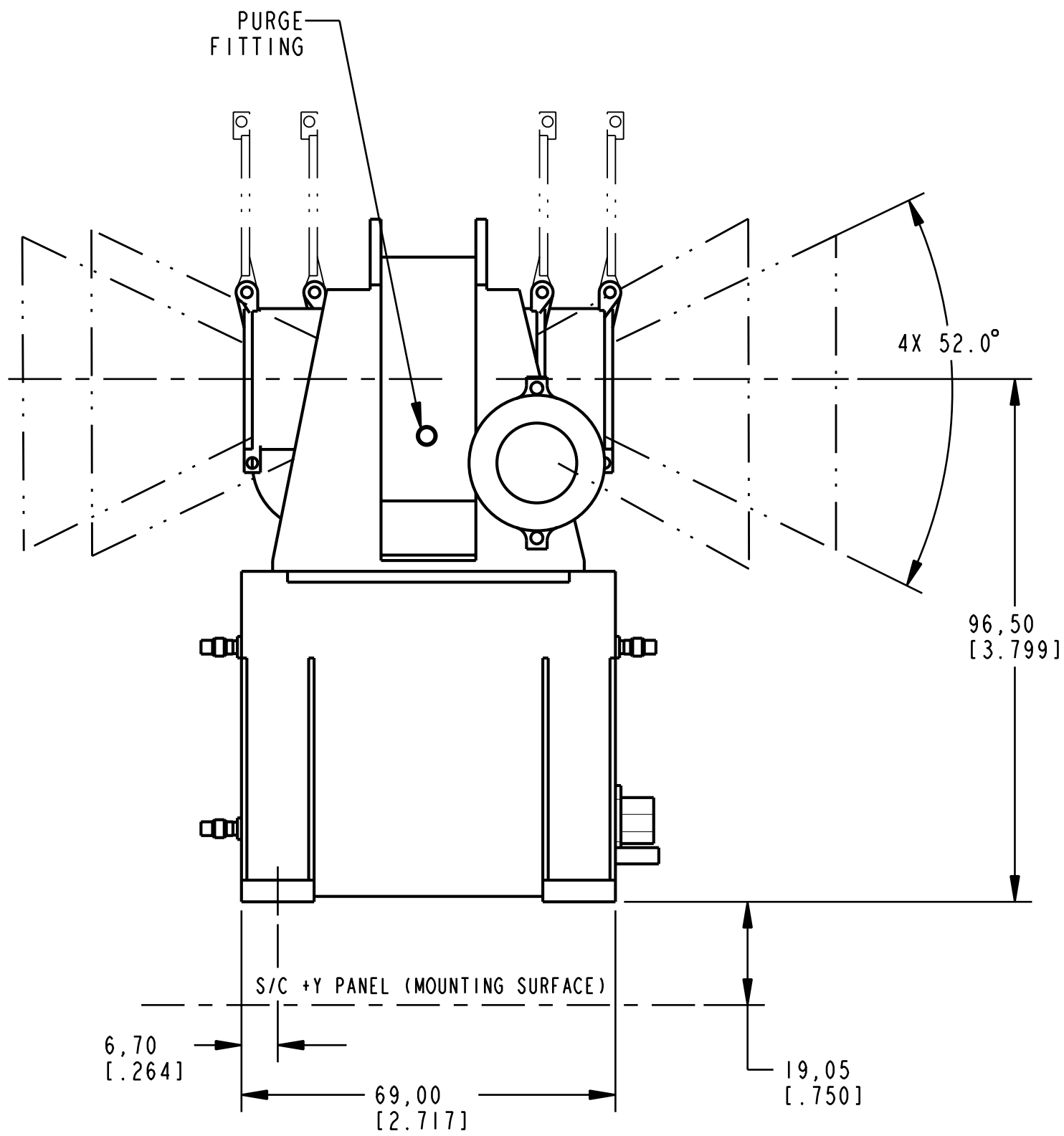
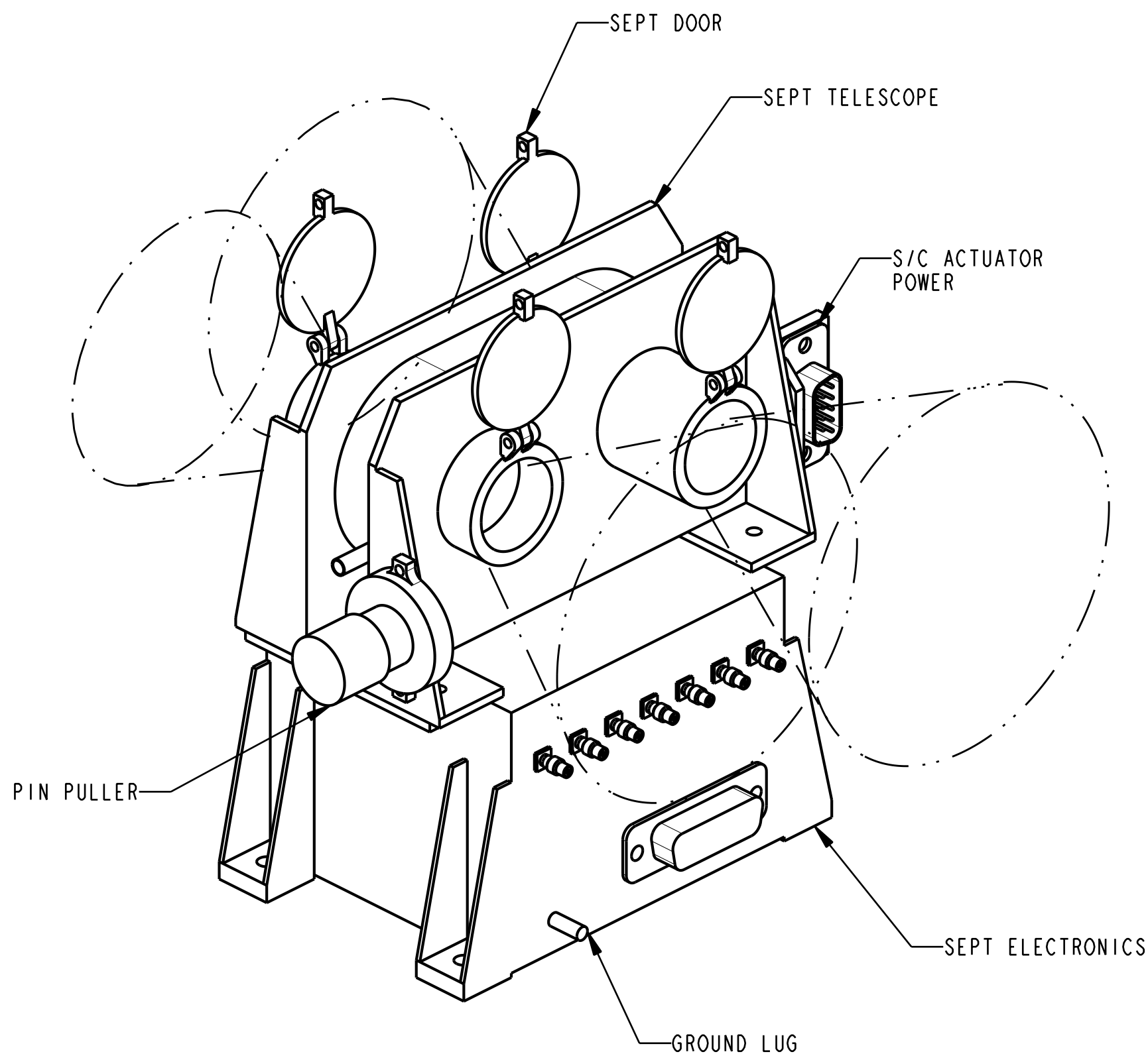


REVISION				
SYM	ZONE	DESCRIPTION	DATE	APPROVAL
-	-	-	-	-

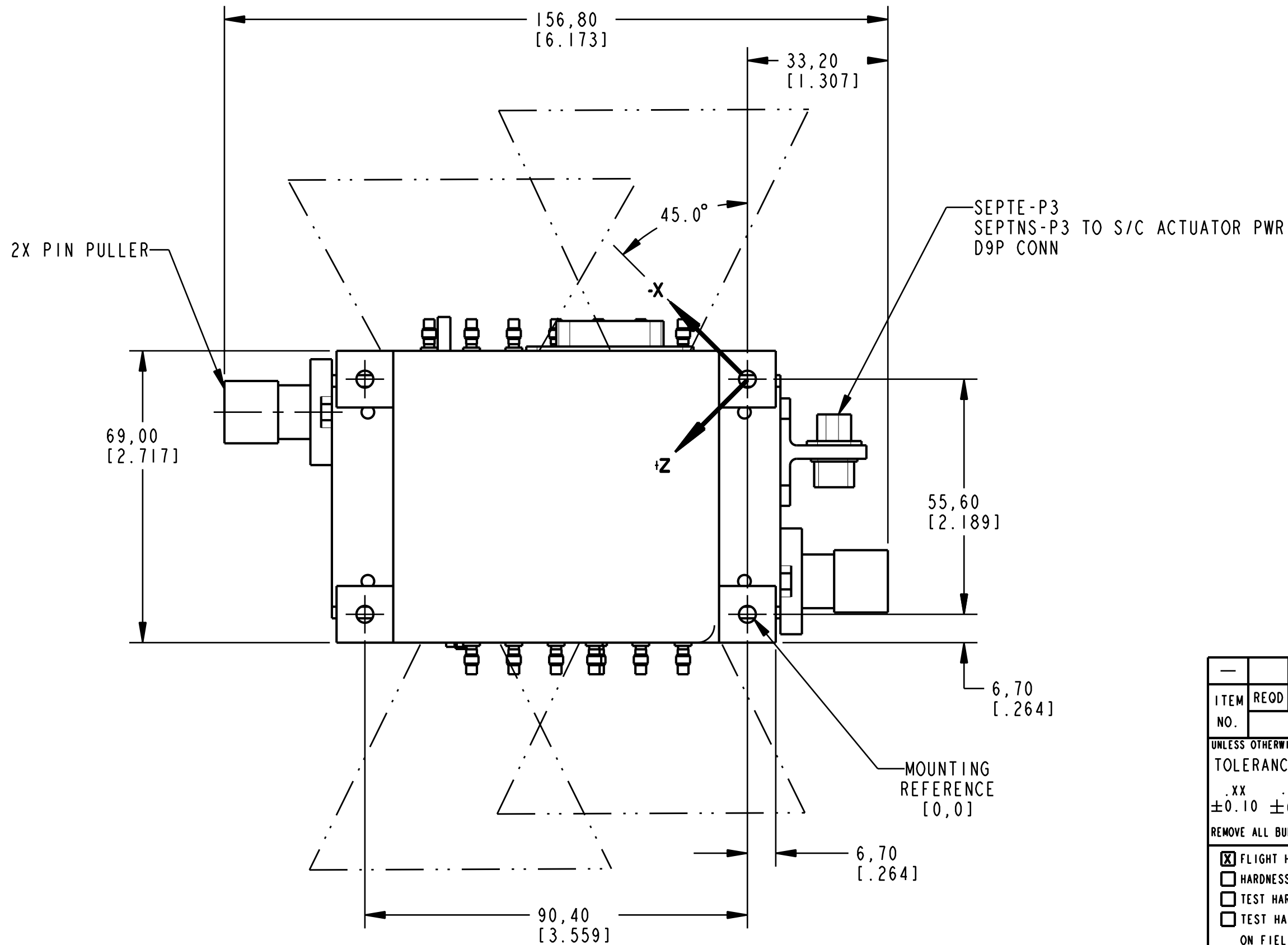


NOTES: UNLESS OTHERWISE NOTED

- ESTIMATED SEPT-E EXPERIMENT MASS: 0.52 Kg
ESTIMATED SEPT-NS W/BRKT EXPERIMENT MASS: 0.79 Kg
BRACKET ATTACHMENT FOR SEPTNS SHOWN ON SHT2.
- ESTIMATED CENTER OF GRAVITY FROM DATUMS
X, Y AND Z:
TBD TBD TBD
[TBD] [TBD] [TBD]
- INERTIA MATRIX:
THE INERTIA MATRIX IS CALCULATED BY PRO-E
I_{XX}= TBD I_{XY}= TBD I_{XZ}= TBD
I_{YX}= TBD I_{YY}= TBD I_{YZ}= TBD
I_{ZX}= TBD I_{ZY}= TBD I_{ZZ}= TBD
NOTE: THESE ARE BOX COORDINATES, NOT
S/C COORDINATES.
- INSTRUMENT WILL BE MOUNTED TO SPACECRAFT ON THERMALLY
ISOLATING BUSHINGS, MAT'L AND SIZE IS STILL TBD.
- INSTRUMENTS FIELDS OF VIEW ARE TO BE KEPT CLEAR
FROM OBSTRUCTIONS WITHOUT PRIOR CONSENT FROM THE
INSTRUMENT TEAM.
- PURGE CONNECTOR, TBD, WILL RECEIVE PURGE FROM
MAIN SEP INSTRUMENT VIA PURGE LINE SUPPLIED.
- INSTRUMENT MOUNTING LOCATION ON SPACECRAFT SHOWN
ON SHEETS 2 & 3; AND FIELD OF VIEW ORIGINS AND SIZES
SHOWN ON SHEET 4.



SCALE 1.000

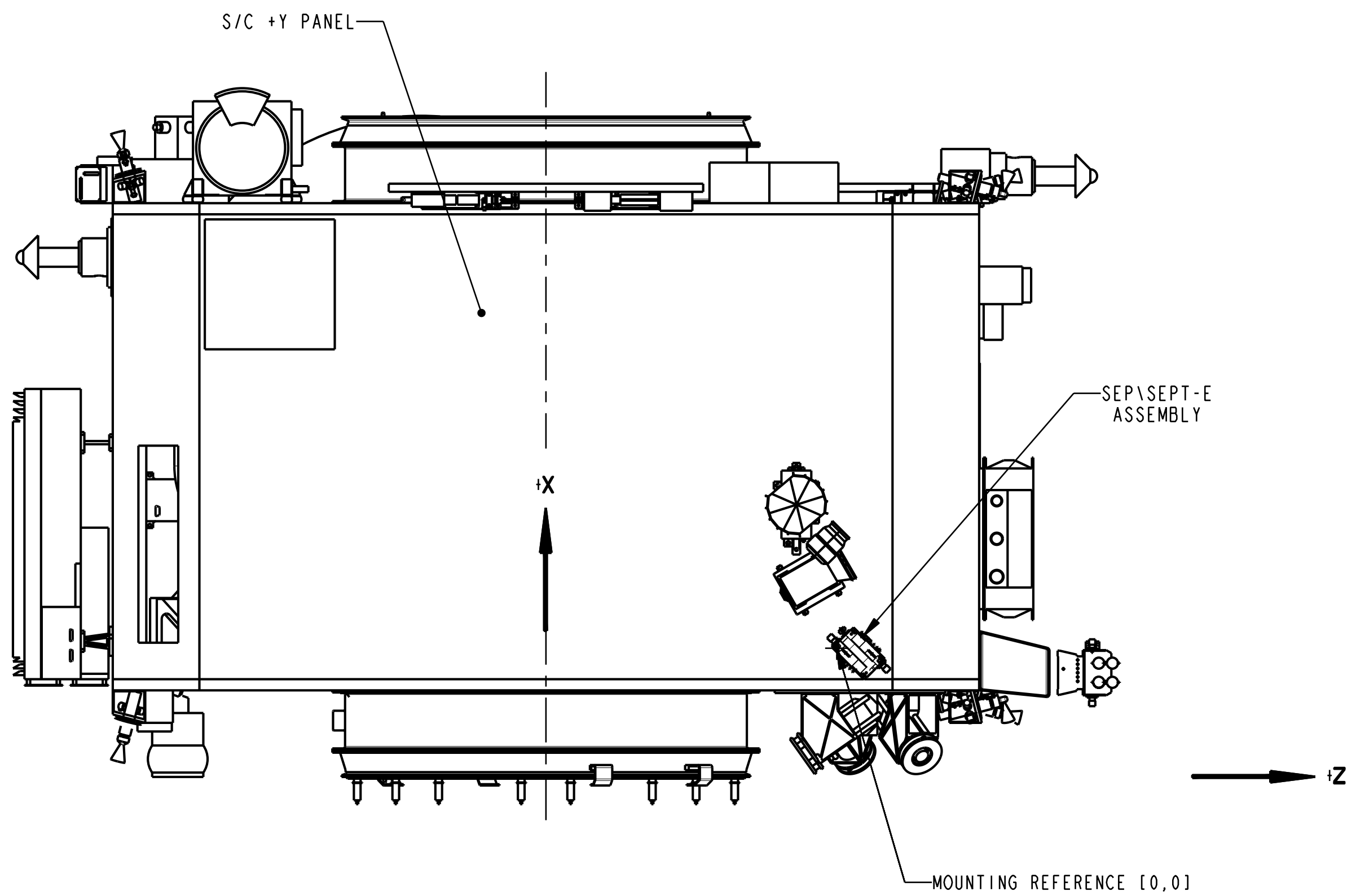
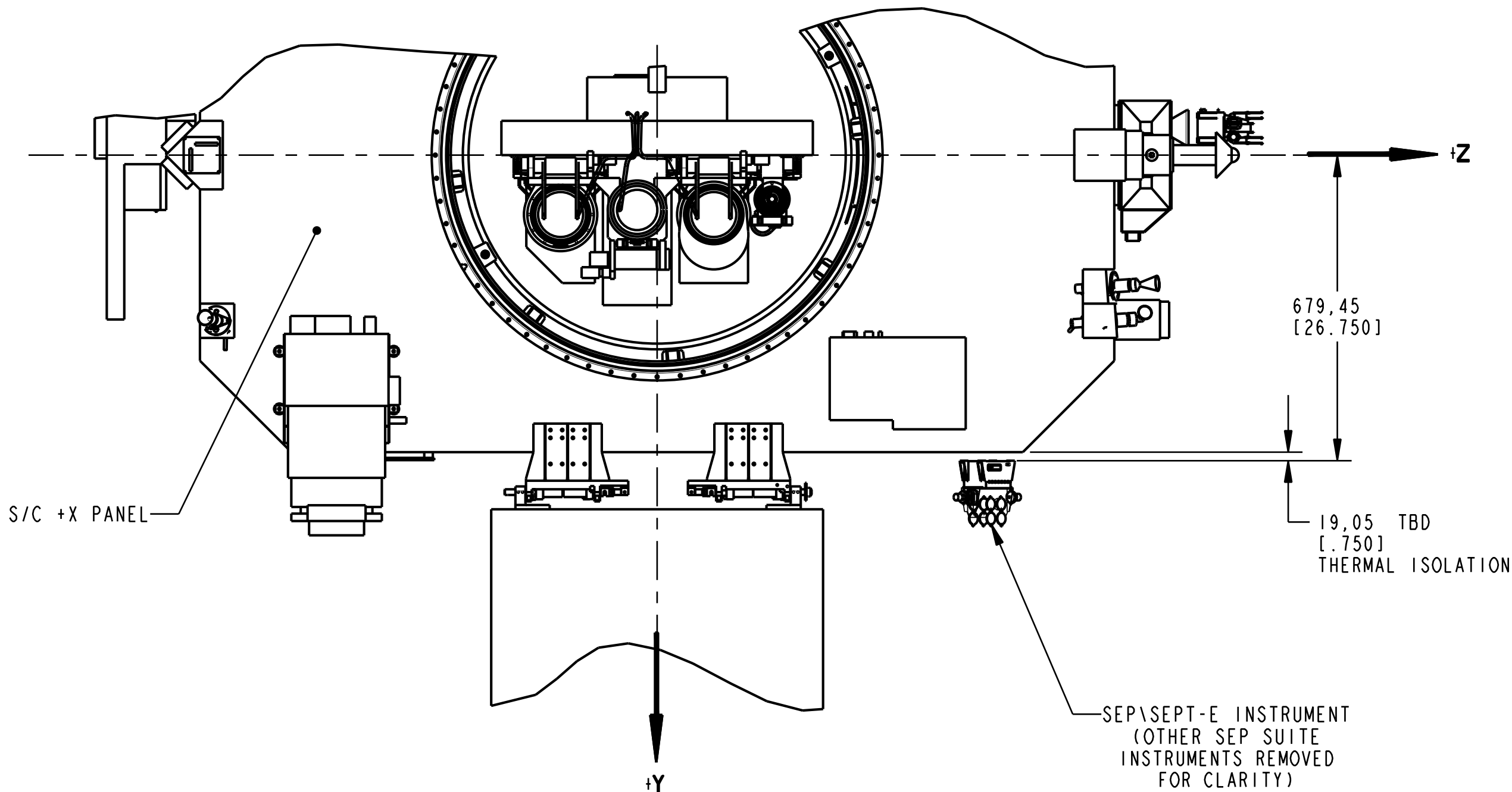


DIMENSIONS ARE IN MILLIMETERS
(INCHES)

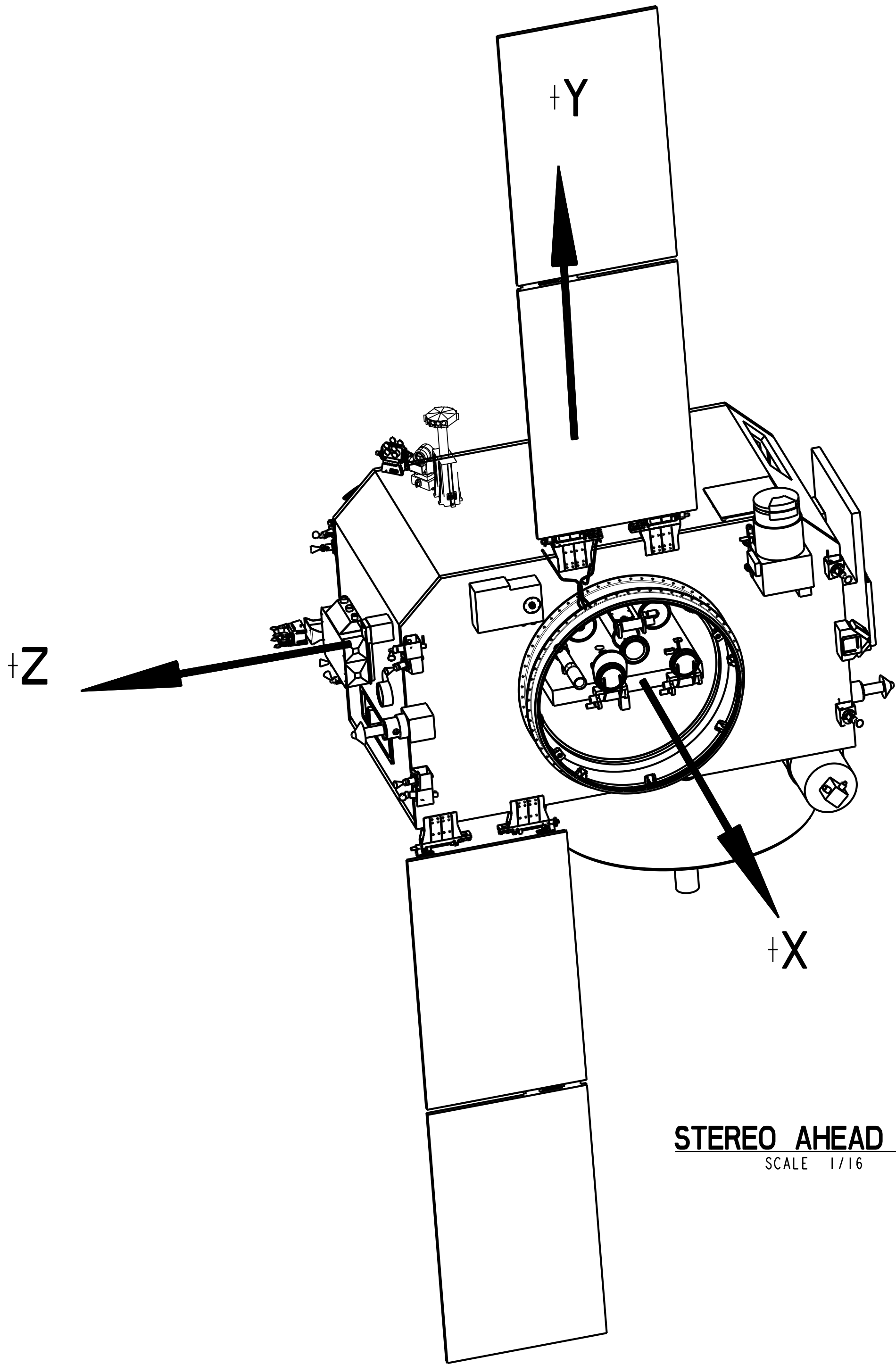
THIS DRAWING WAS PRODUCED USING
SOFTWARE: Pro/ENGINEER VERSION: 2001
FILE NAME: 2053420
MODEL NAME: SEPT-DELIVERABLE

ITEM NO.	RECD	RECD	PART NO.	DESCRIPTION	MATERIAL	MATERIAL SPEC & NO.
LIST OF MATERIAL						
TOLERANCES: XX .XXX ±0.10 ±0.05 ±0.1 ±1/16				NATIONAL AERONAUTICS AND SPACE ADMINISTRATION Goddard Space Flight Center Greenbelt, Maryland		
REMOVE ALL BURRS AND SHARP EDGES R.010 OR CHAMFER MAX.				DESIGNER SHUMAN	INIT.	DATE
UNLESS OTHERWISE SPECIFIED DIMENSIONS ARE IN MILLIMETERS				DRAWN SHUMAN		
DRAWING INTERPRETED PER GSFC-X673-64-1				CHECKED vonROSENVINGE		
TITLE INTERFACE CONTROL DRAWING SEP/SEPT INSTRUMENTS STEREO AHEAD SPACECRAFT				APPROVED		
APPROVED-STRESS				APPROVED-ENGINEER		
NEXT ASSEMBLY				USED ON		
CODE: 663				SCALE: AS SHOWN	SHEET: 1 OF 4	

REVISION				
SYM	ZONE	DESCRIPTION	DATE	APPROVAL
-	-	-	-	-



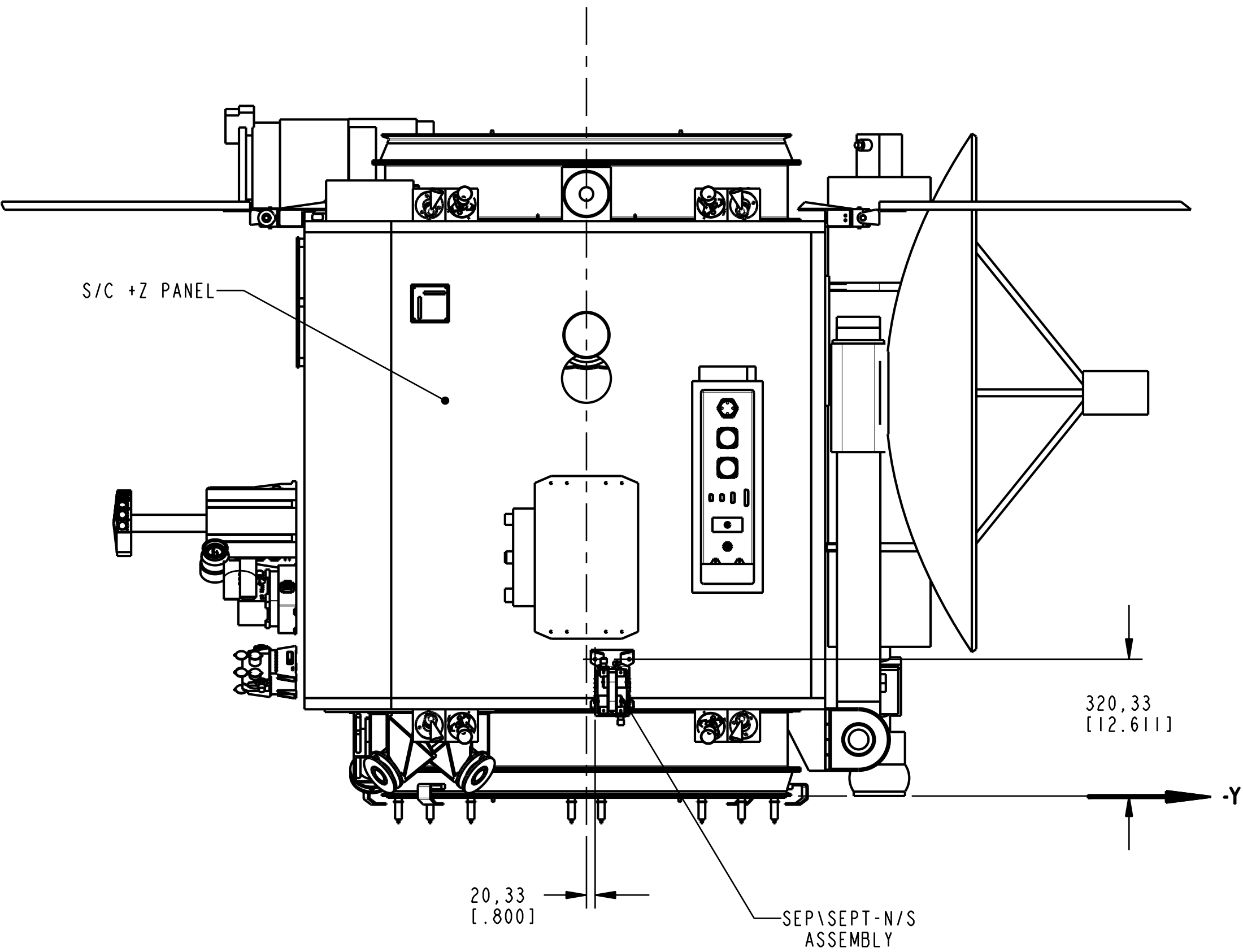
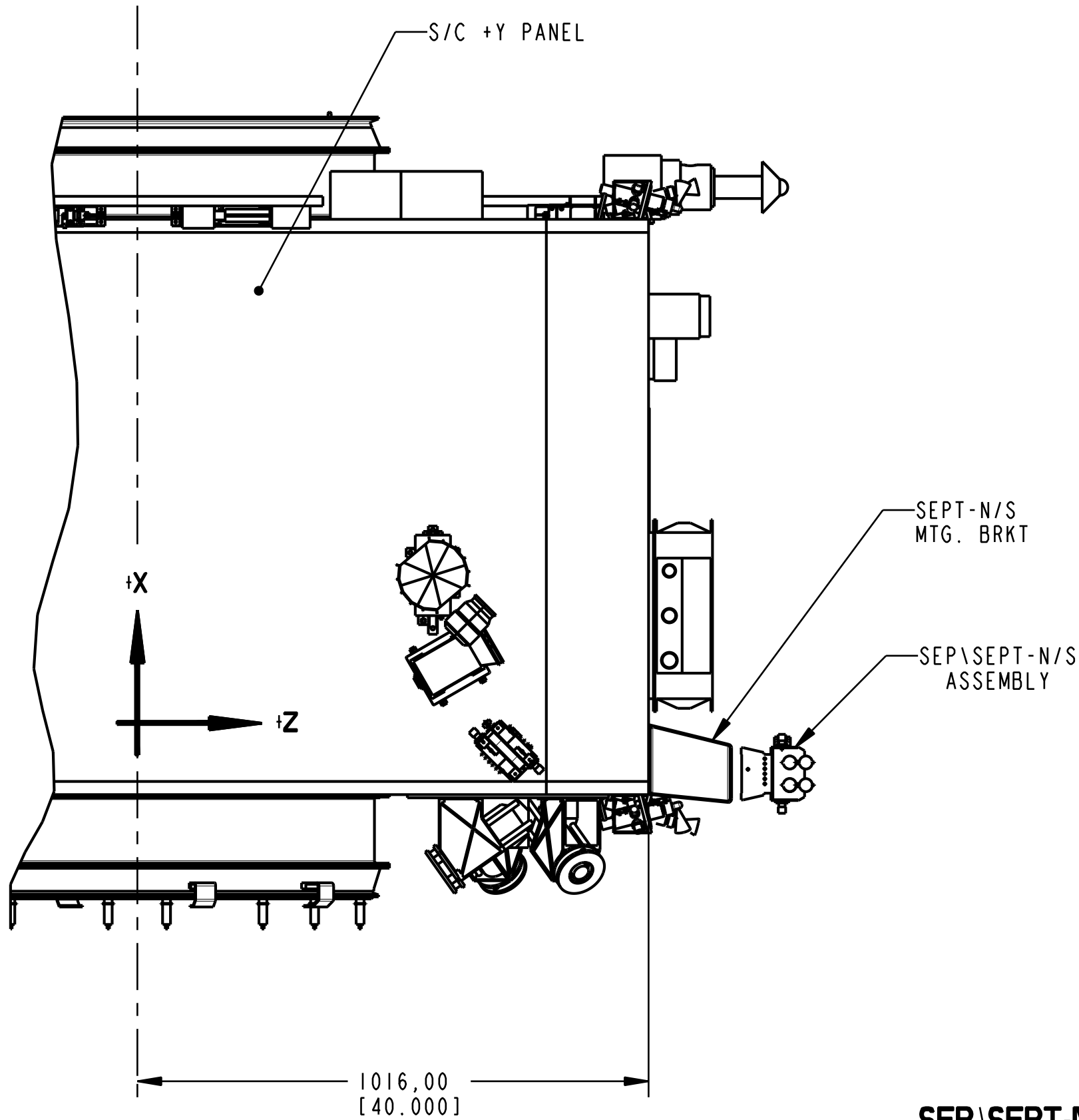
SEP\SEPT-E ASSEMBLY MOUNTING LOCATION
SCALE 0.100
SPACECRAFT COORDINATES [X,Y,Z]
+***, +***, +***



DIMENSIONS ARE IN MILLIMETERS
(INCHES)

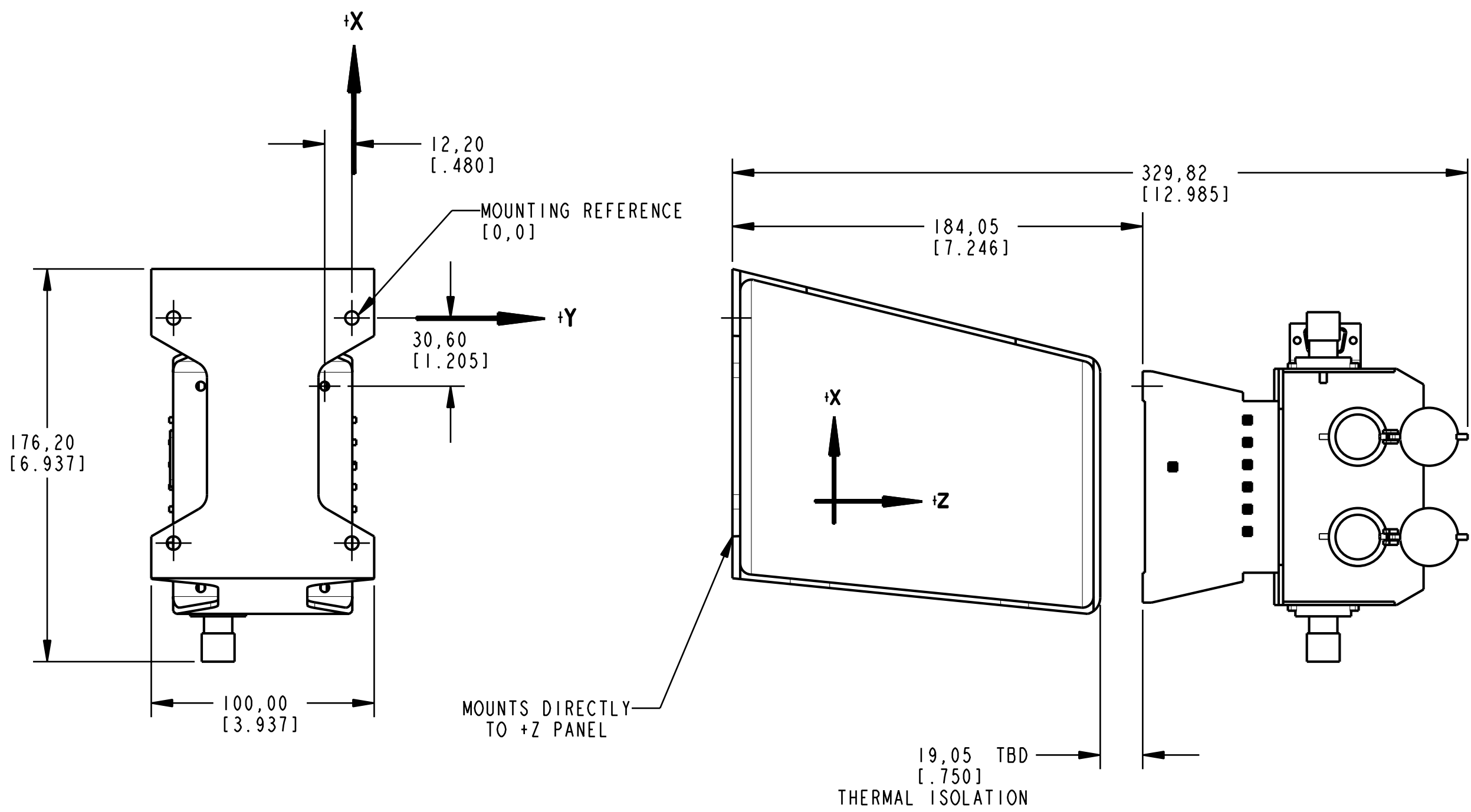
NATIONAL AERONAUTICS AND SPACE ADMINISTRATION			Goddard Space Flight Center			Greenbelt, Maryland		
NAME	INIT.	DATE	DRAWING INTERPRETED PER GSFC-X673-64-1					
DESIGNER SHUMAN			INTERFACE CONTROL DRAWING SEP\SEPT INSTRUMENTS STEREO AHEAD SPACECRAFT					
DRAWN SHUMAN								
CHECKED ---								
APPROVED ---								
APPROVED ---								
APPROVED-STRESS ---			GD		2053420			
APPROVED-ENGINEER ---			CODE: 663			SCALE: AS SHOWN		SHEET: 2 OF 4

REVISION				
SYM	ZONE	DESCRIPTION	DATE	APPROVAL
-	-	-	-	-



SEP\SEPT-N/S BRACKET MOUNTING LOCATION

SCALE 0.100
SPACECRAFT COORDINATES (X,Y,Z)
+320.33, -20.33, +1016.00
[12.611] [.800] [40.000]



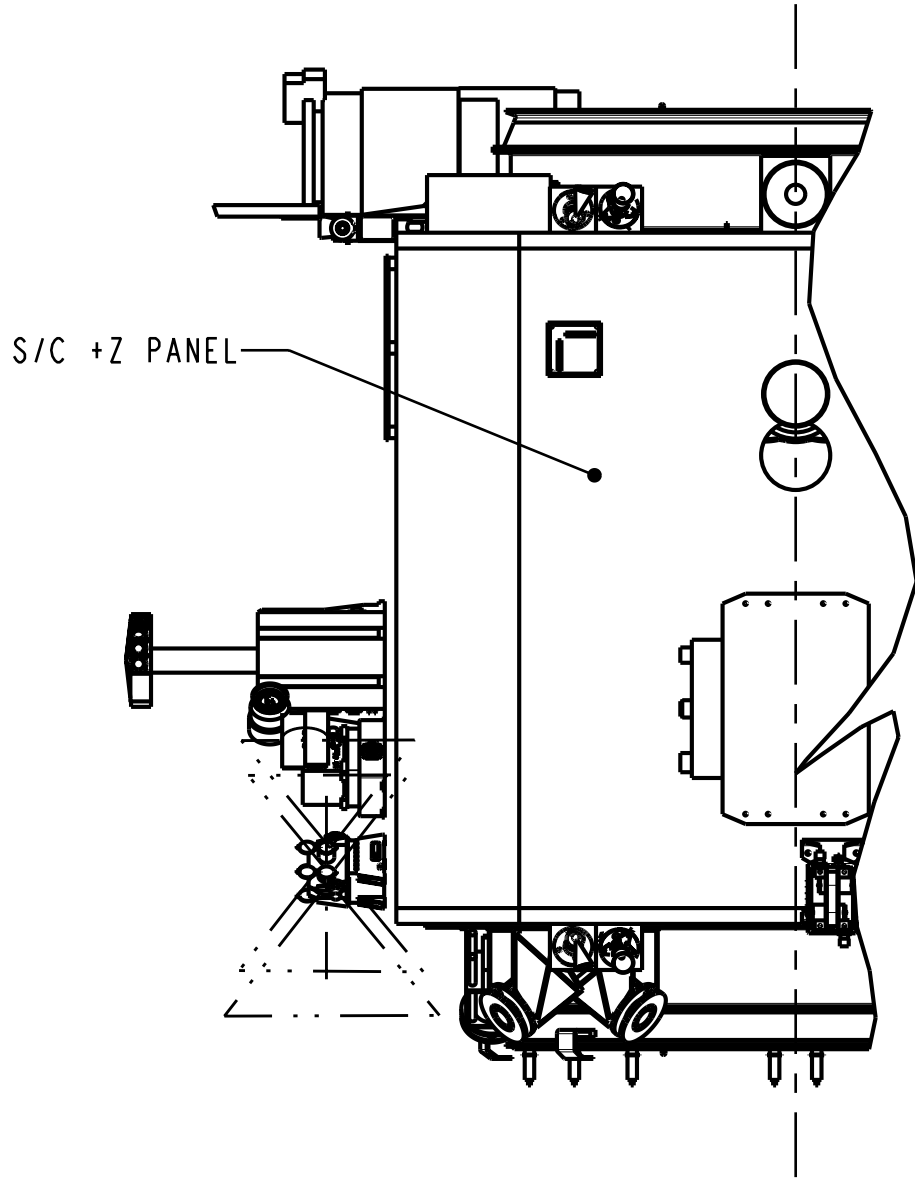
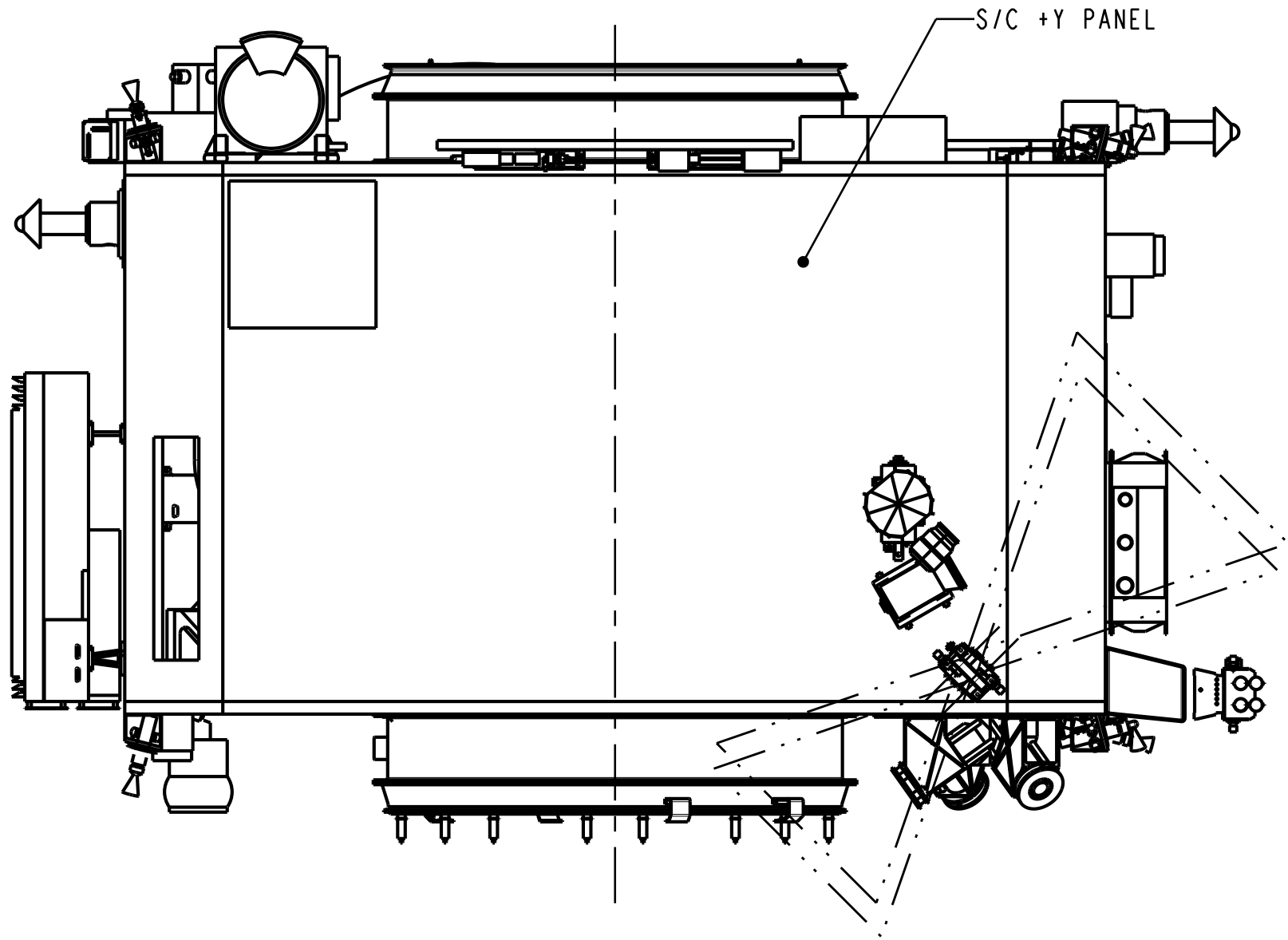
SEPT-NS- BRACKET ATTACHMENT

SCALE 0.500

DIMENSIONS ARE IN MILLIMETERS
(INCHES)

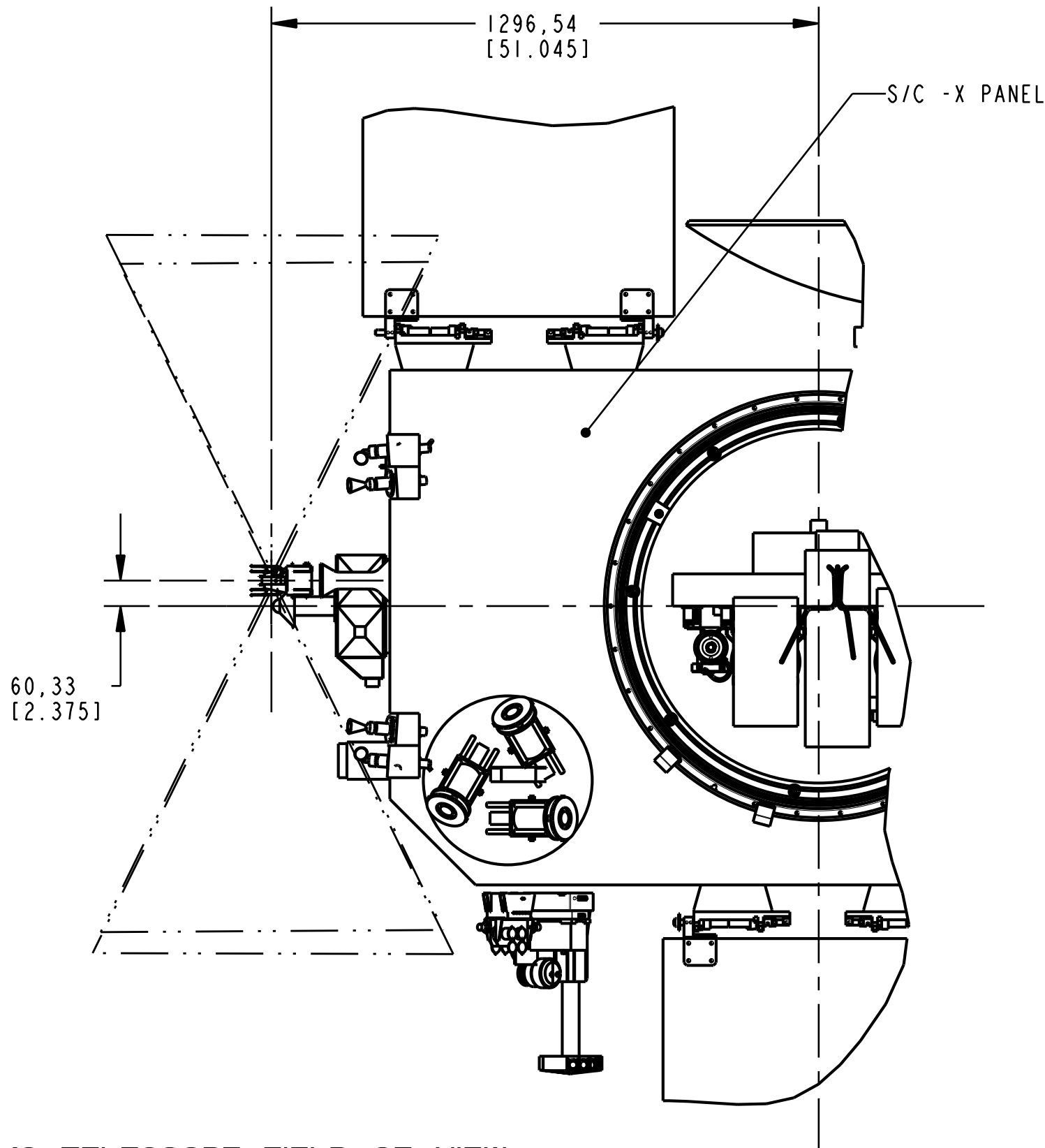
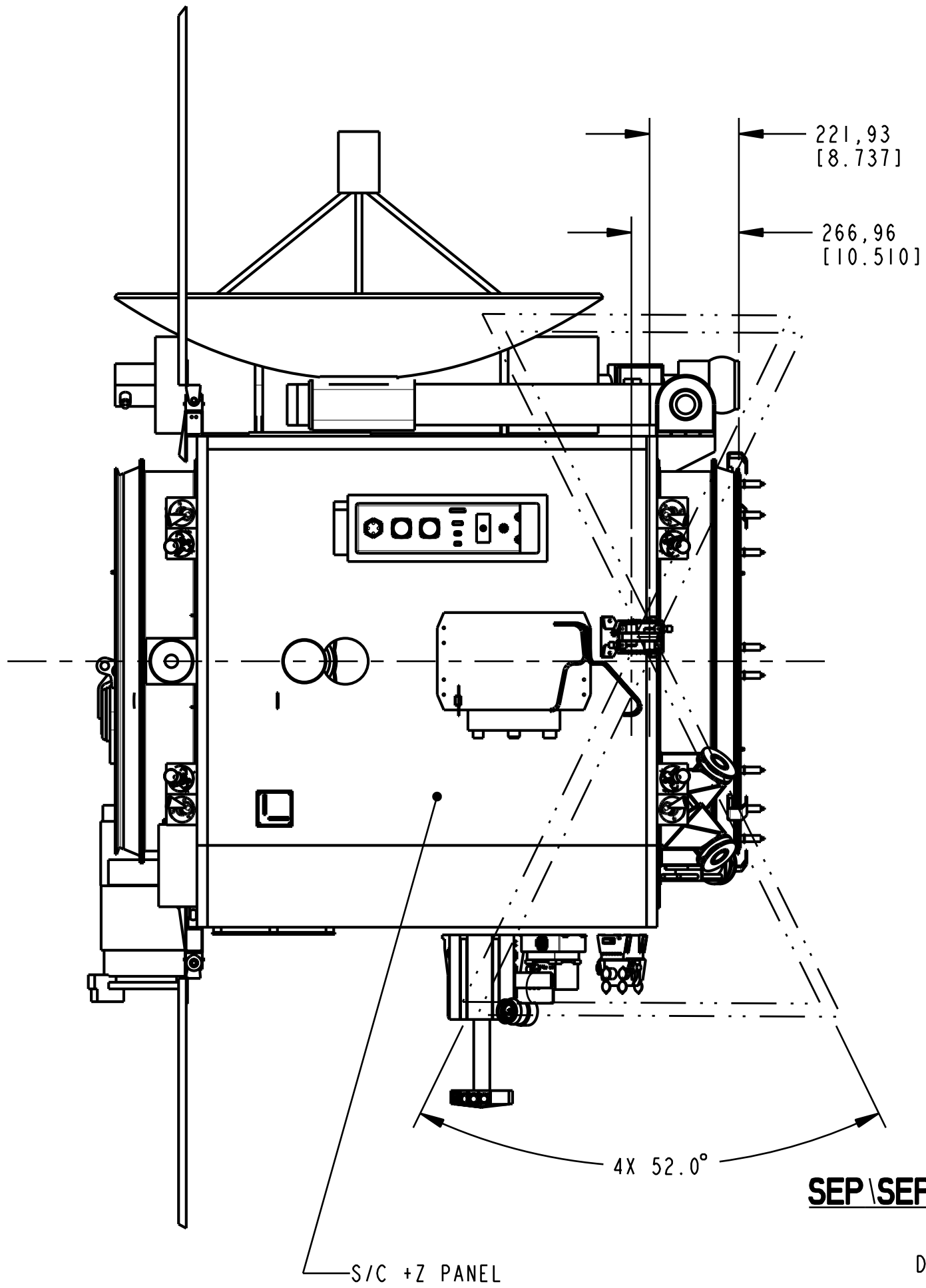
NATIONAL AERONAUTICS AND SPACE ADMINISTRATION		Goddard Space Flight Center		Greenbelt, Maryland	
NAME	INIT.	DATE	DRAWING INTERPRETED PER GSFC-X673-64-1		
DESIGNER SHUMAN			TITLE INTERFACE CONTROL DRAWING SEP\SEPT INSTRUMENTS STEREO AHEAD SPACECRAFT		
DRAWN SHUMAN					
CHECKED - - -					
APPROVED - - -					
APPROVED - - -					
APPROVED-STRESS - - -			GD	2053420	-
APPROVED-ENGINEER - - -			CODE: 663 SCALE: AS SHOWN		SHEET: 3 OF 4

REVISION				
SYM	ZONE	DESCRIPTION	DATE	APPROVAL
-	-	-	-	-



SEP/SEPT-N/S TELESCOPE FIELD OF VIEW

SCALE 0.080
DIMENSIONS SHOWN FROM S/C ORIGINS
F.O.V.: 4X 52° CONICAL



SEP/SEPT-N/S TELESCOPE FIELD OF VIEW

SCALE 0.080
DIMENSIONS SHOWN FROM S/C ORIGINS
F.O.V.: 4X 52° CONICAL

DIMENSIONS ARE IN MILLIMETERS
(INCHES)

NATIONAL AERONAUTICS AND SPACE ADMINISTRATION		Goddard Space Flight Center		Greenbelt, Maryland	
NAME	INIT.	DATE	DRAWING INTERPRETED PER GSFC-X673-64-1		
DESIGNER SHUMAN			INTERFACE CONTROL DRAWING SEP/SEPT INSTRUMENTS STEREO AHEAD SPACECRAFT		
DRAWN SHUMAN					
CHECKED - - -					
APPROVED - - -					
APPROVED - - -					
APPROVED-STRESS - - -			GD	2053420	
APPROVED-ENGINEER - - -					
			CODE: 663	SCALE: AS SHOWN	SHEET: 4 OF 4