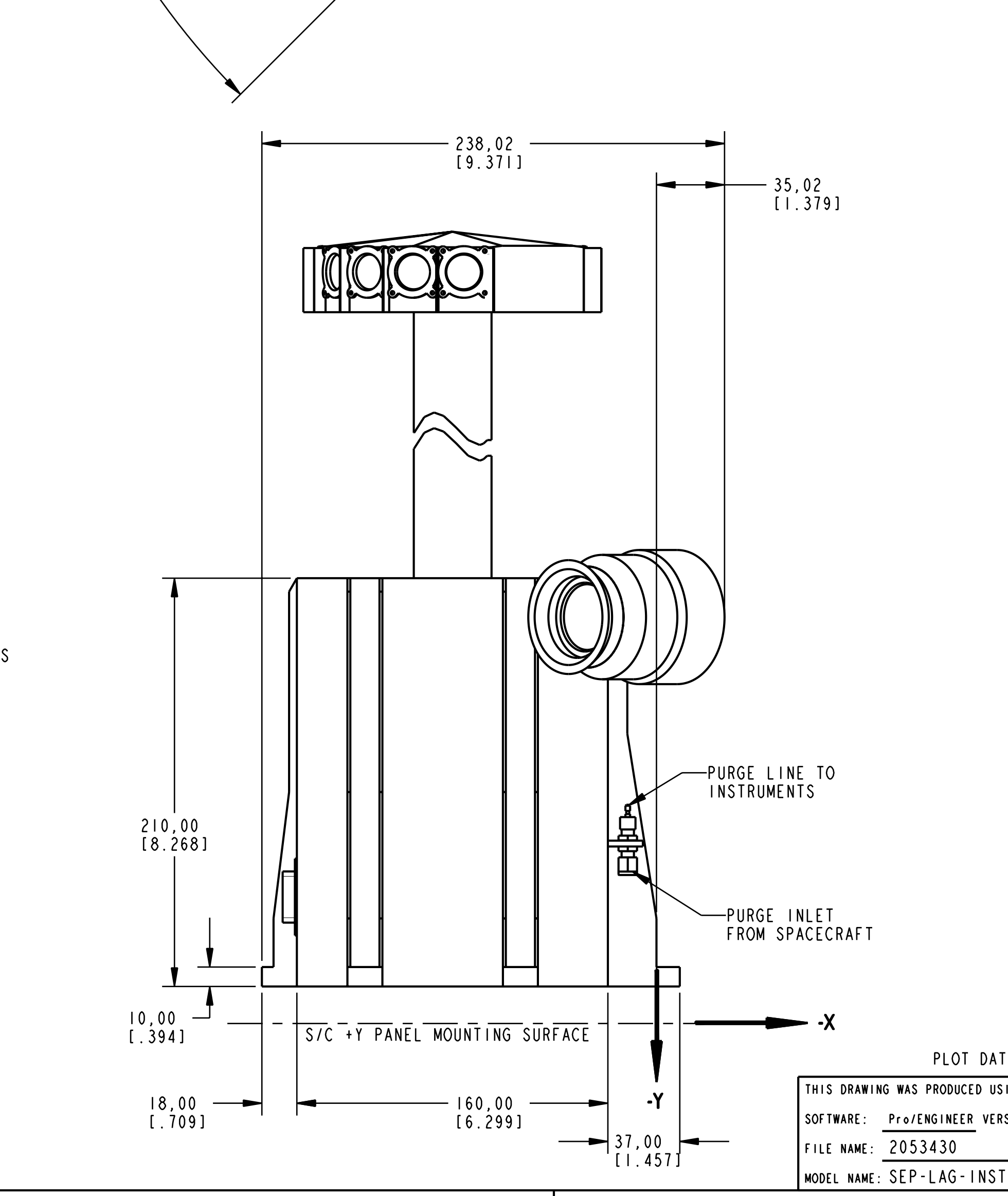
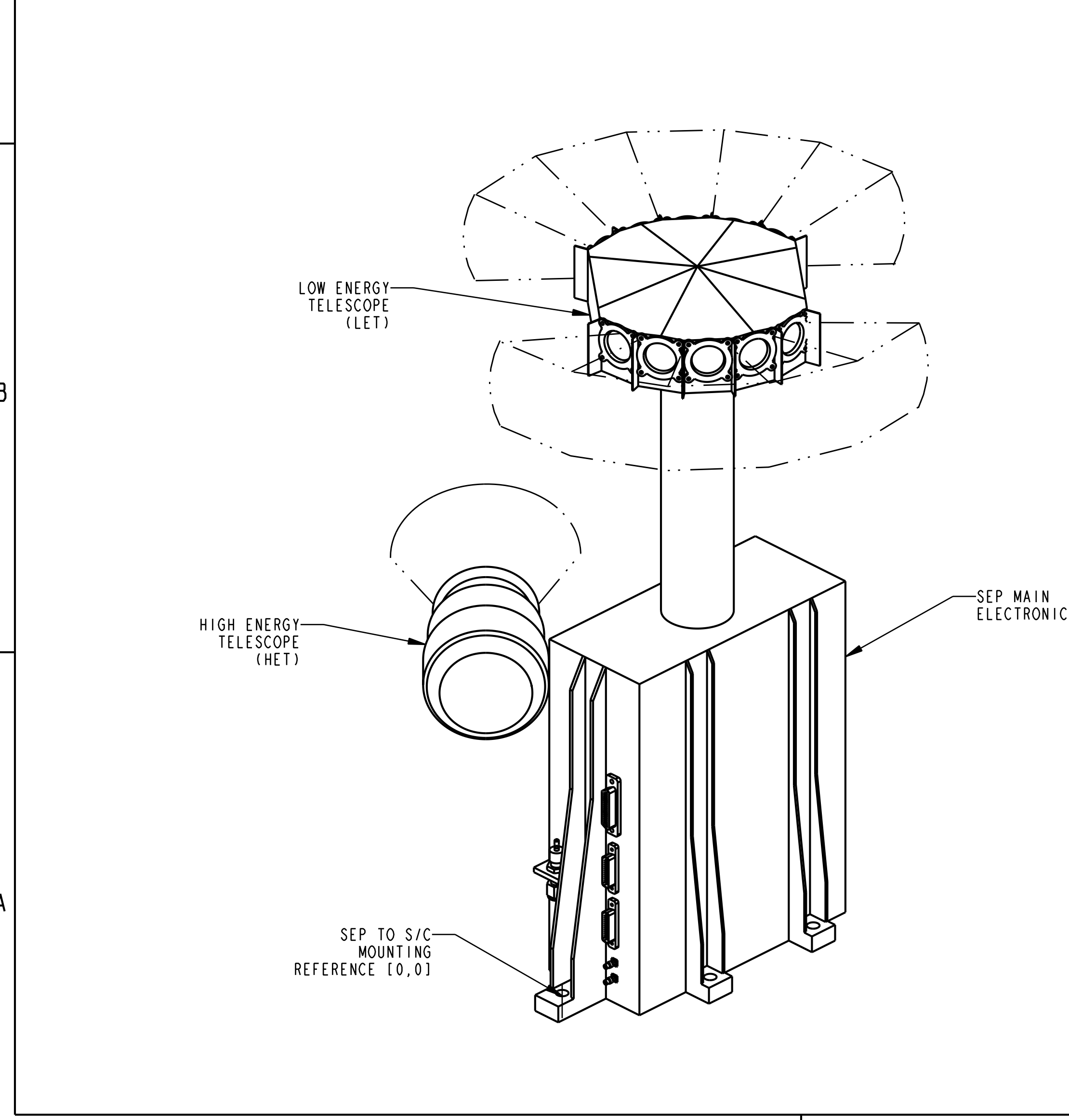
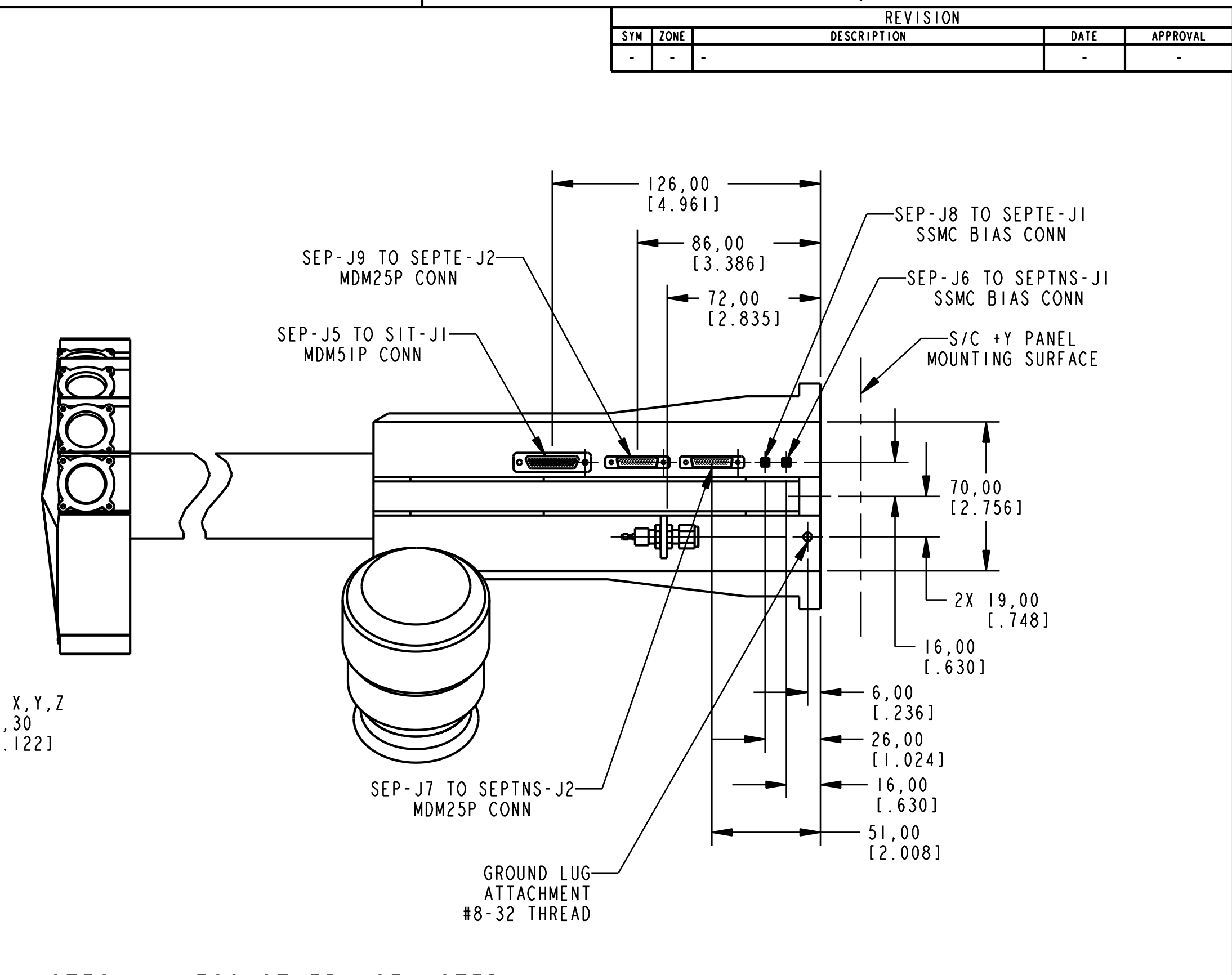
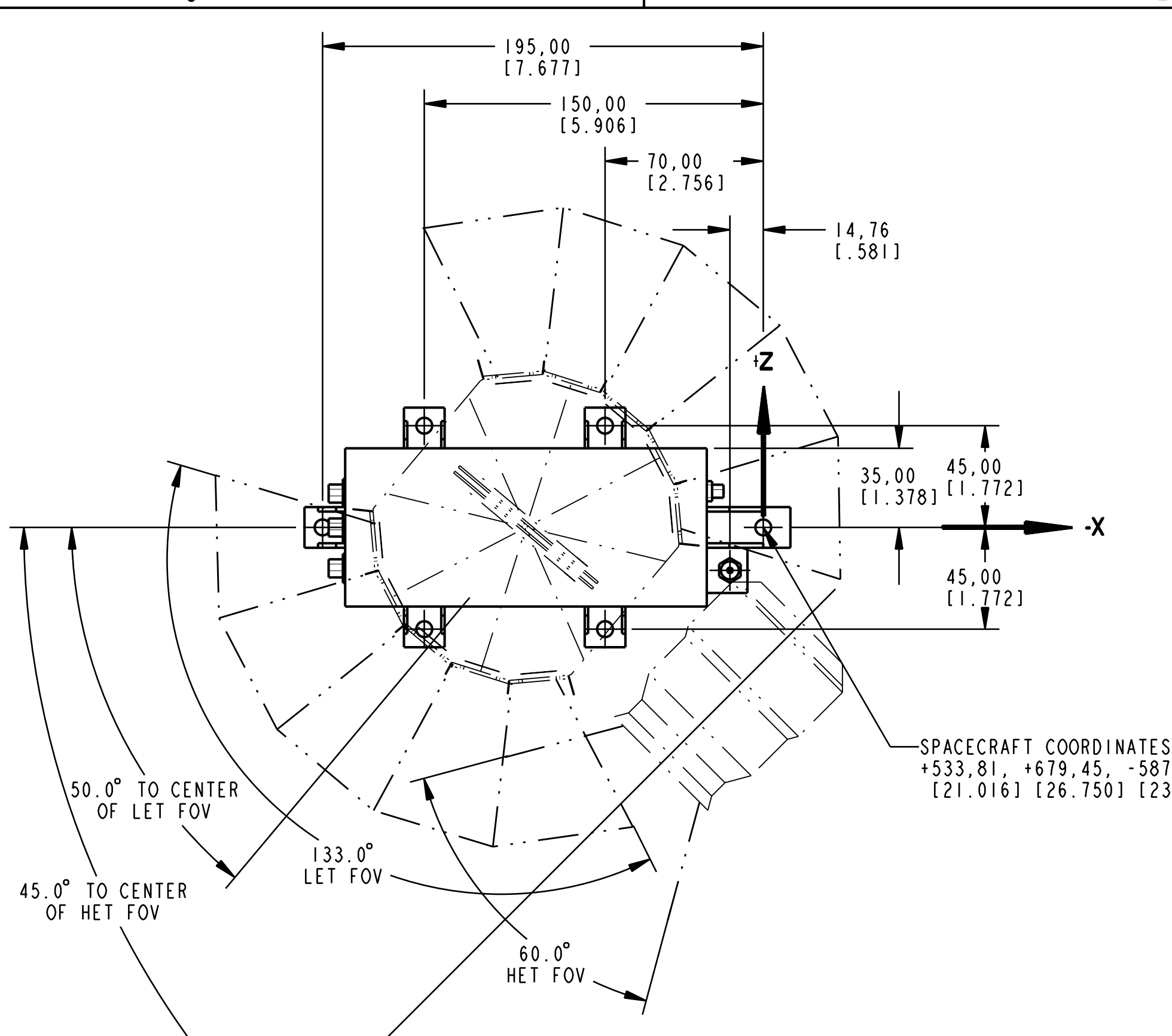
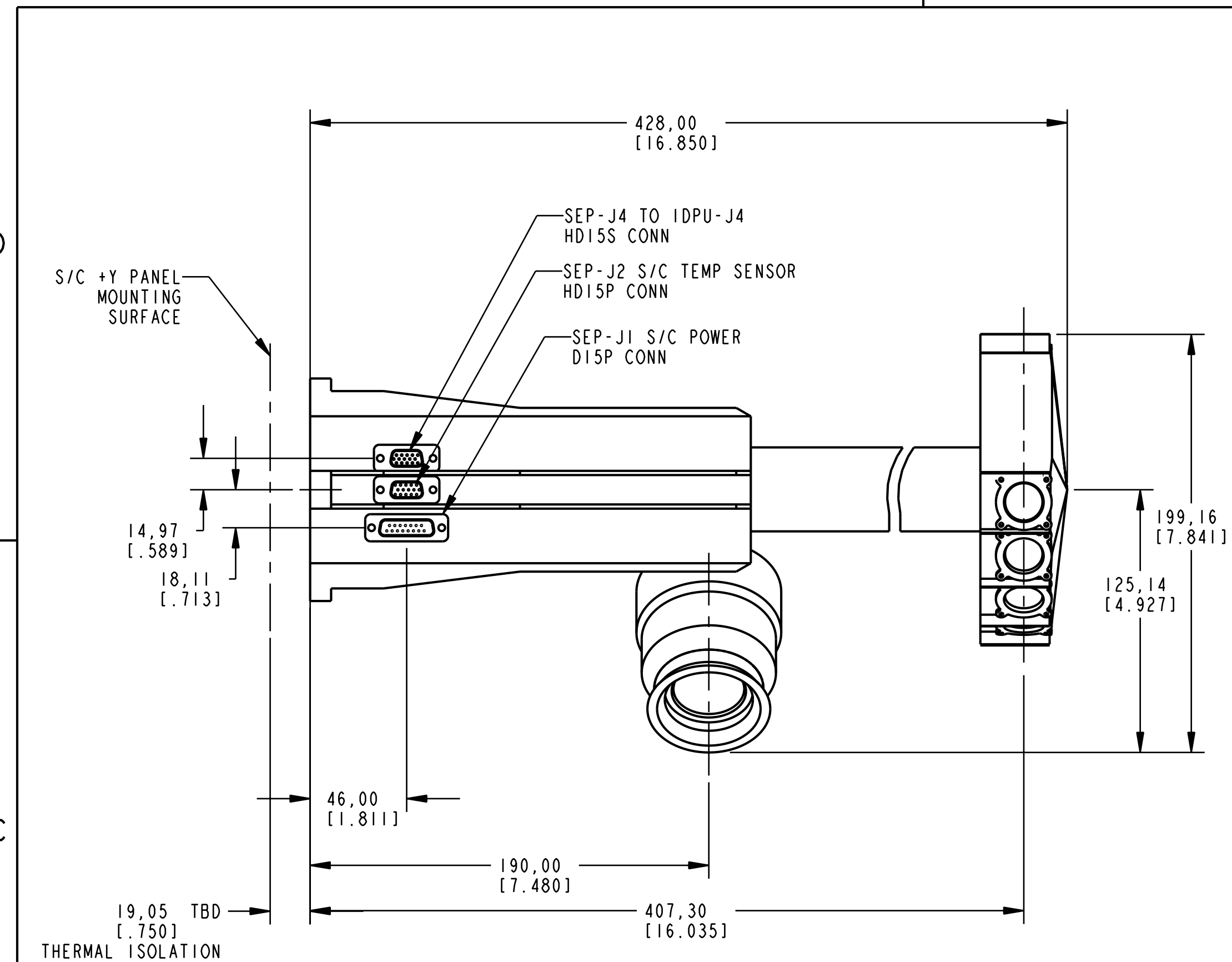


SYM		ZONE		REVISION		DATE	APPROVAL
-	-	-	-	-	-	-	-



- NOTES: UNLESS OTHERWISE NOTED
- ESTIMATED EXPERIMENT MASS: 4.60 Kg
 - ESTIMATED CENTER OF GRAVITY FROM DATUMS
X, Y AND Z: X Y Z
TBD TBD TBD
[TBD] [TBD] [TBD]
 - INERTIA MATRIX:
THE INERTIA MATRIX IS CALCULATED BY PRO-E
I_{XX}= TBD I_{XY}= TBD I_{XZ}= TBD
I_{YX}= TBD I_{YY}= TBD I_{YZ}= TBD
I_{ZX}= TBD I_{ZY}= TBD I_{ZZ}= TBD
NOTE: THESE ARE BOX COORDINATES, NOT S/C COORDINATES.
 - INSTRUMENT WILL BE MOUNTED TO SPACECRAFT ON THERMALLY ISOLATING BUSHINGS, MAT'L AND SIZE IS STILL TBD.
 - INSTRUMENTS FIELDS OF VIEW ARE TO BE KEPT CLEAR FROM OBSTRUCTIONS WITHOUT PRIOR CONSENT FROM THE INSTRUMENT TEAM.
 - RED TAG COVERS WILL BE PROVIDED OVER INSTRUMENT APERTURES AND MUST BE REMOVED JUST PRIOR TO LAUNCH.
 - PURGE CONNECTOR, TBD, WILL ACCEPT 1/4" TUBE OUTSIDE DIAMETER WITH .19" MIN OPENING.
 - INSTRUMENT MOUNTING LOCATION ON SPACECRAFT SHOWN ON SHEET 2; AND FIELD OF VIEW ORIGINS AND SIZES SHOWN ON SHEET 3.

ALL DIMENSIONS ARE IN MILLIMETERS (INCHES)

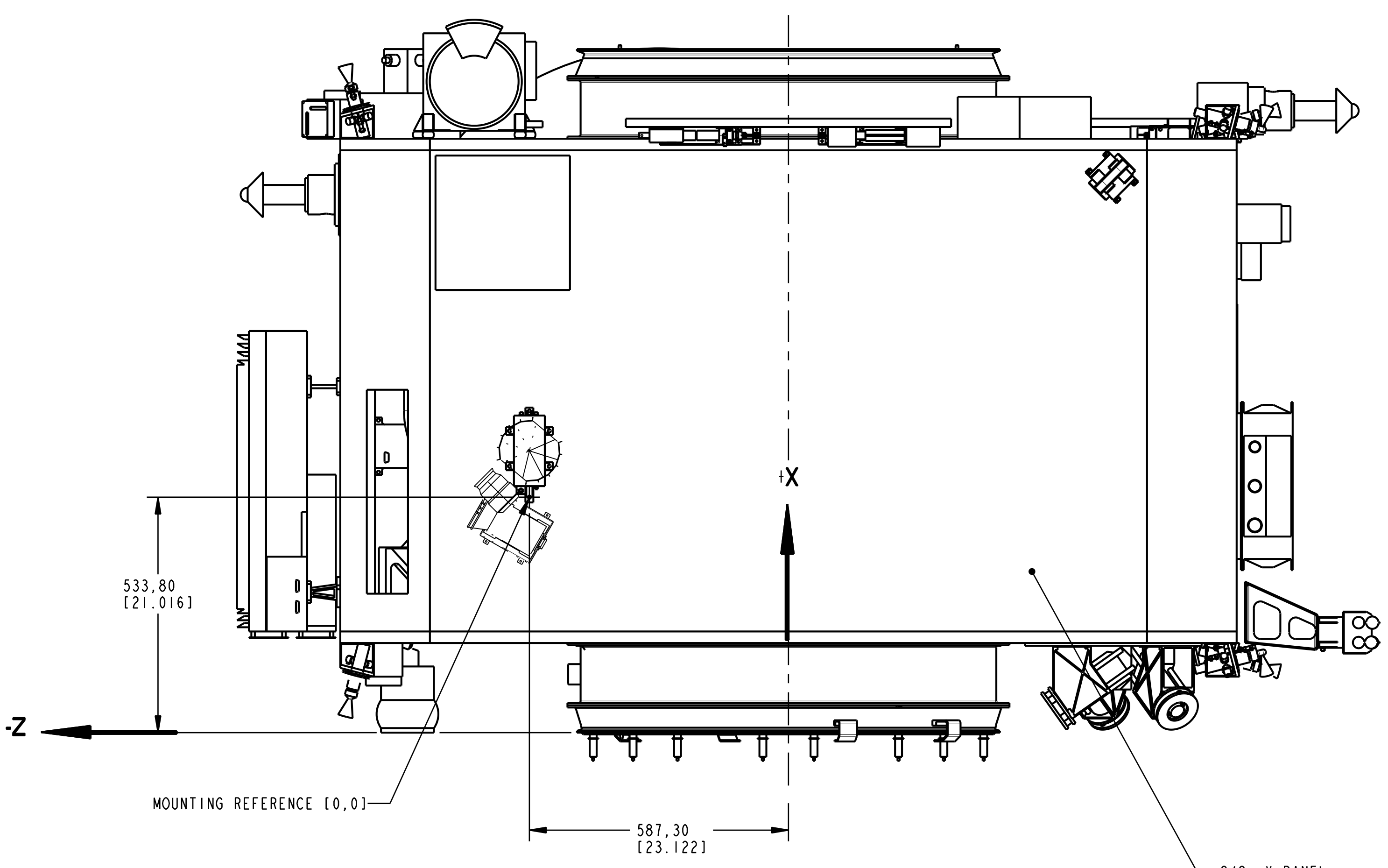
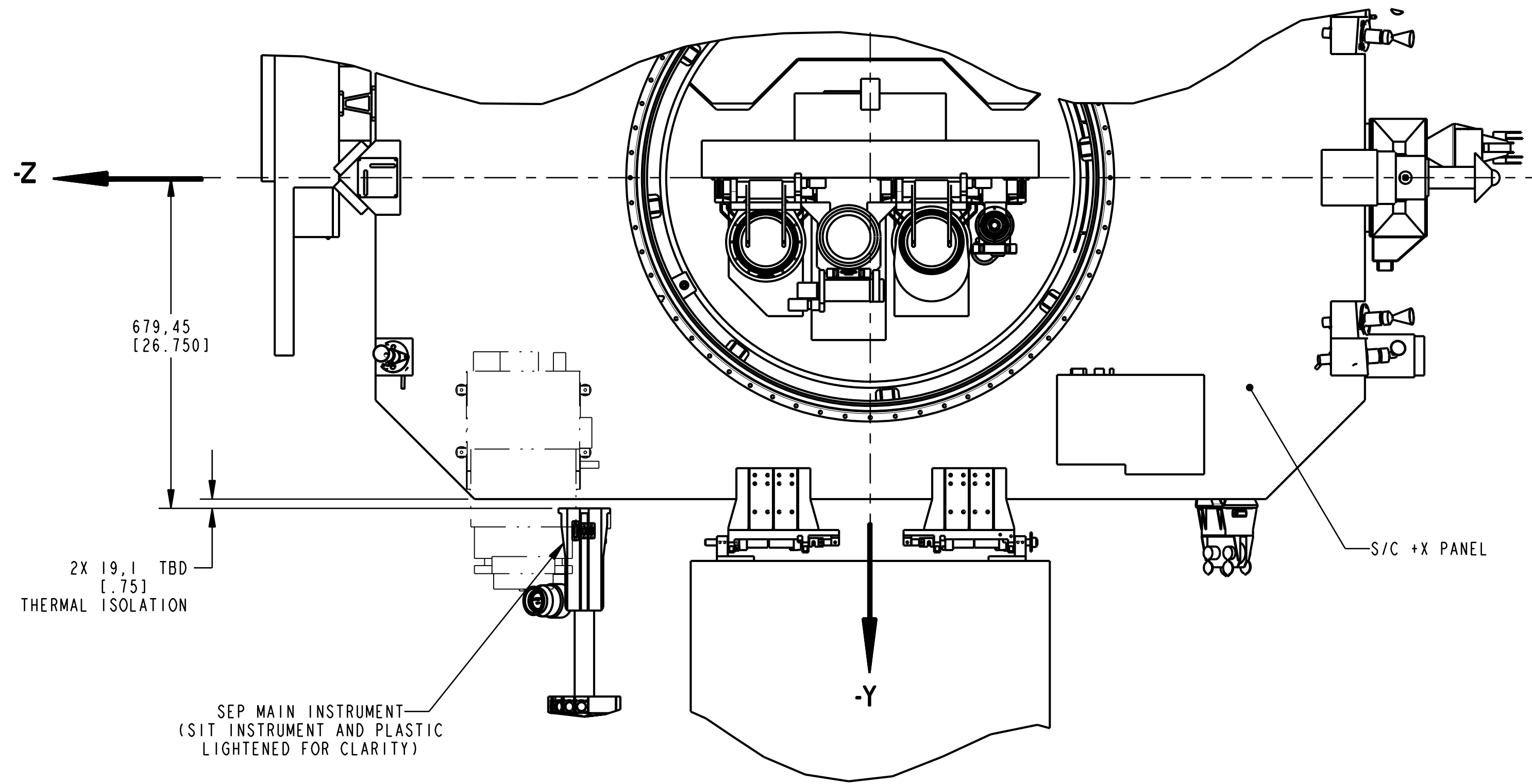
ITEM NO.	RECD	RECD	PART NO.	DESCRIPTION	MATERIAL	MATERIAL SPEC & NO.
LIST OF MATERIAL						
TOLERANCES: XX .XXX ≤ FRACTIONS 125 ±0.10 ±0.05 ±0.1 ± 1/16						
NATIONAL AERONAUTICS AND SPACE ADMINISTRATION Goddard Space Flight Center Greenbelt, Maryland						
DRAWING INTERPRETED PER GSFC-4673-64-1						
REMOVE ALL BURRS AND SHARP EDGES R.010 OR CHAMFER MAX.						
DESIGNER SHUMAN						
DRAWN SHUMAN						
CHECKED HARDSEWING						
APPROVED						
APPROVED-STRESS						
APPROVED-ENGINEER						
TITLE: INTERFACE CONTROL DRAWING SEP MAIN INSTRUMENT STEREO BEHIND SPACECRAFT						
GD 2053430						
CODE: 663 SCALE: AS SHOWN SHEET: 1 OF 3						

PLOT DATE: 22-Oct-01
THIS DRAWING WAS PRODUCED USING SOFTWARE: Pro/ENGINEER VERSION: 2001
FILE NAME: 2053430
MODEL NAME: SEP-LAG-INSTRUMENT-LAYOUT

GD2053430

A

REVISION				
SYM	ZONE	DESCRIPTION	DATE	APPROVAL
-	-	-	-	-

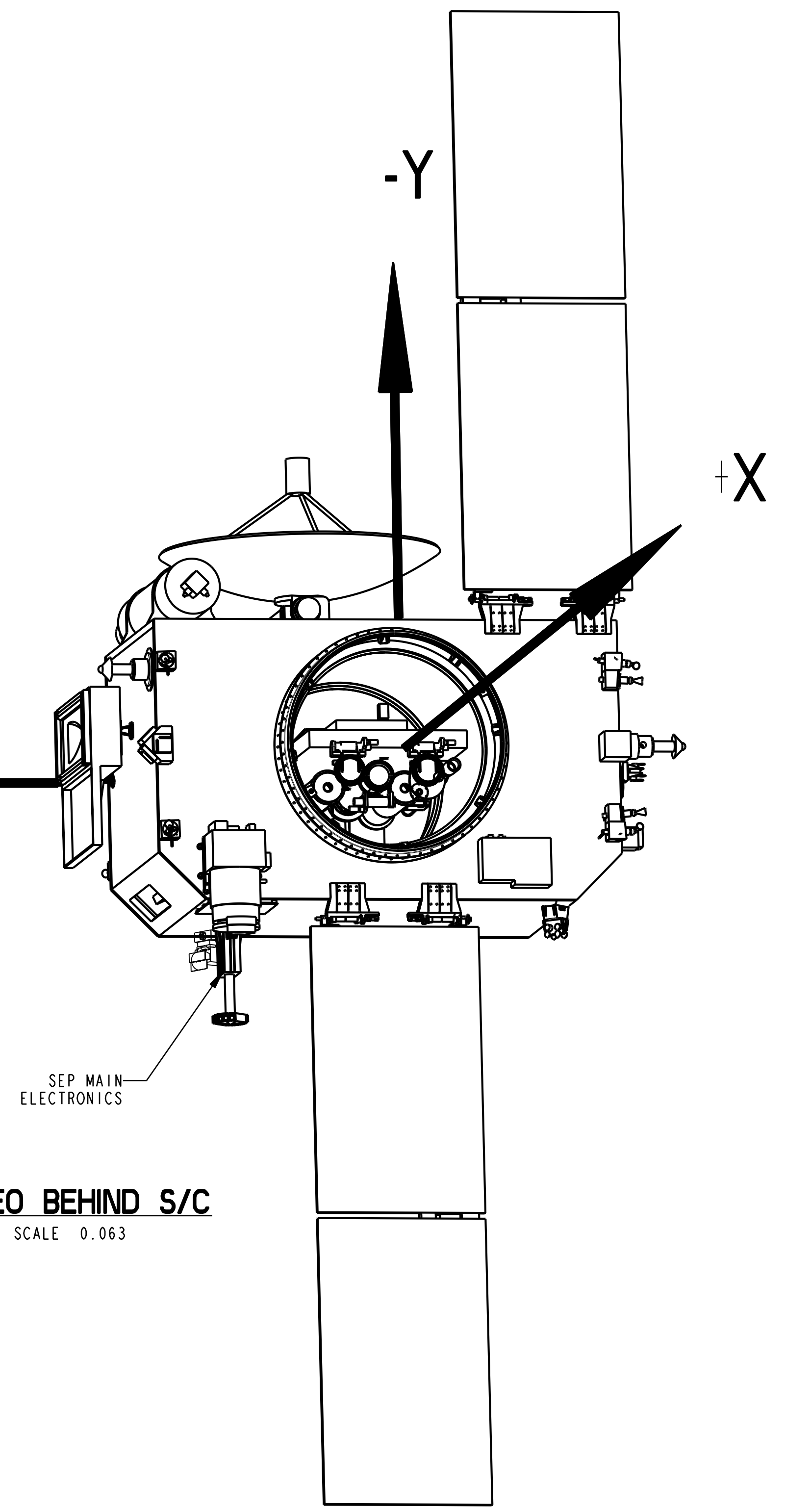


SEP ELECTRONICS ASSEMBLY MOUNTING LOCATION

SPACECRAFT COORDINATES [X, Y, Z]:
 +533.80 , +679.45 , -587.30
 [21.016] [26.750] [23.122]

SCALE 0.125

STEREO BEHIND S/C
 SCALE 0.063



NATIONAL AERONAUTICS AND SPACE ADMINISTRATION				Goddard Space Flight Center		Greenbelt, Maryland	
NAME	INIT.	DATE	DRAWING INTERPRETED PER GSFC-X673-64-1				
DESIGNER			TITLE				
SHUMAN			INTERFACE CONTROL DRAWING				
DRAWN			SEP MAIN INSTRUMENT				
---			STEREO BEHIND SPACECRAFT				
CHECKED							

APPROVED							

APPROVED							

APPROVED-STRESS							

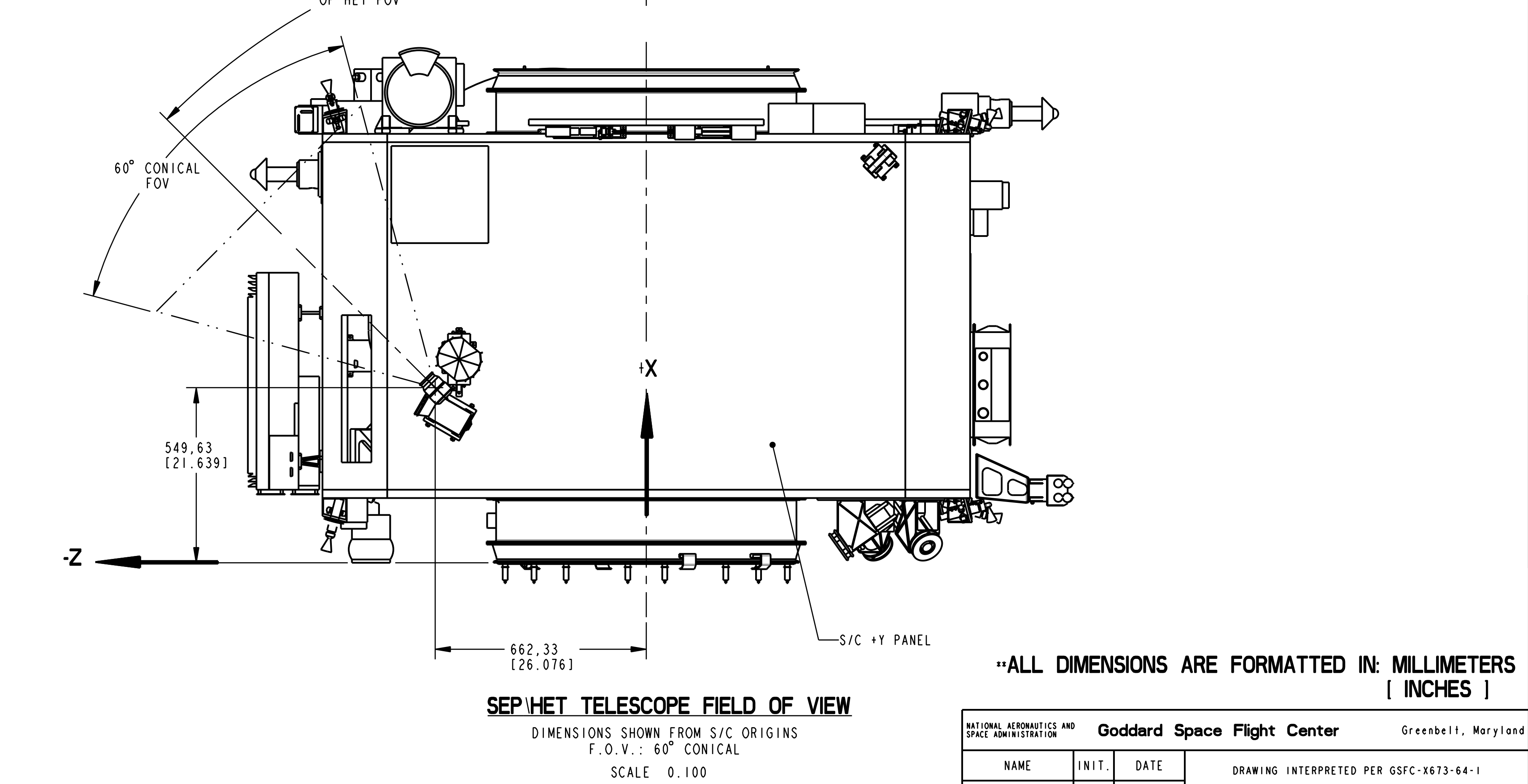
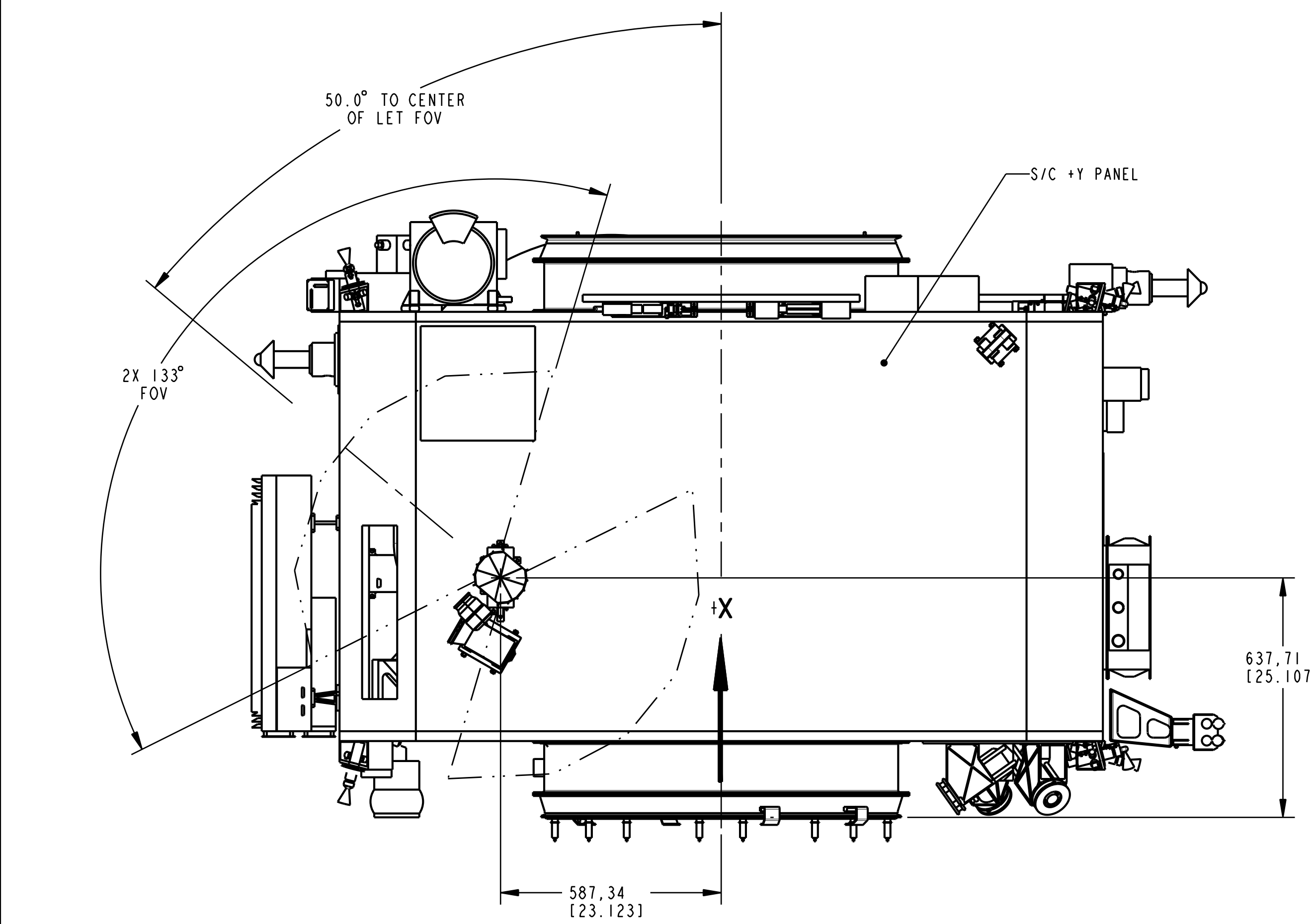
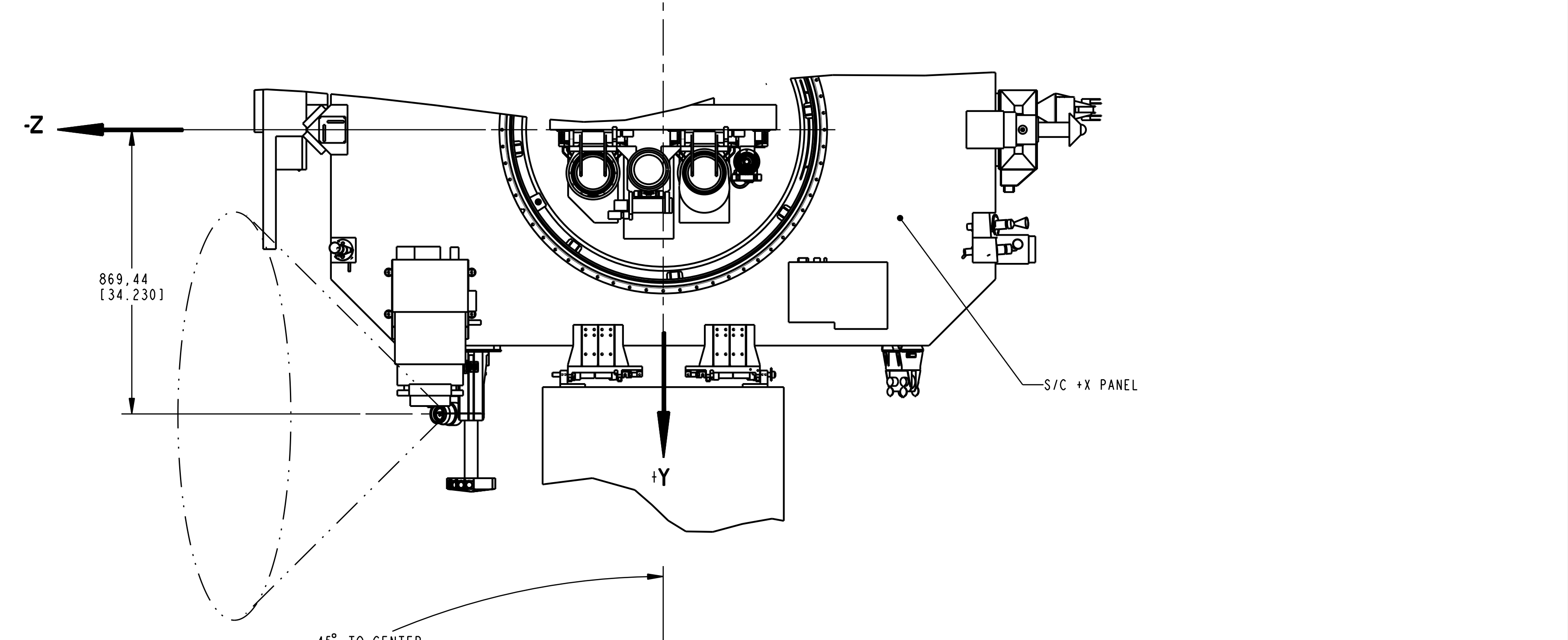
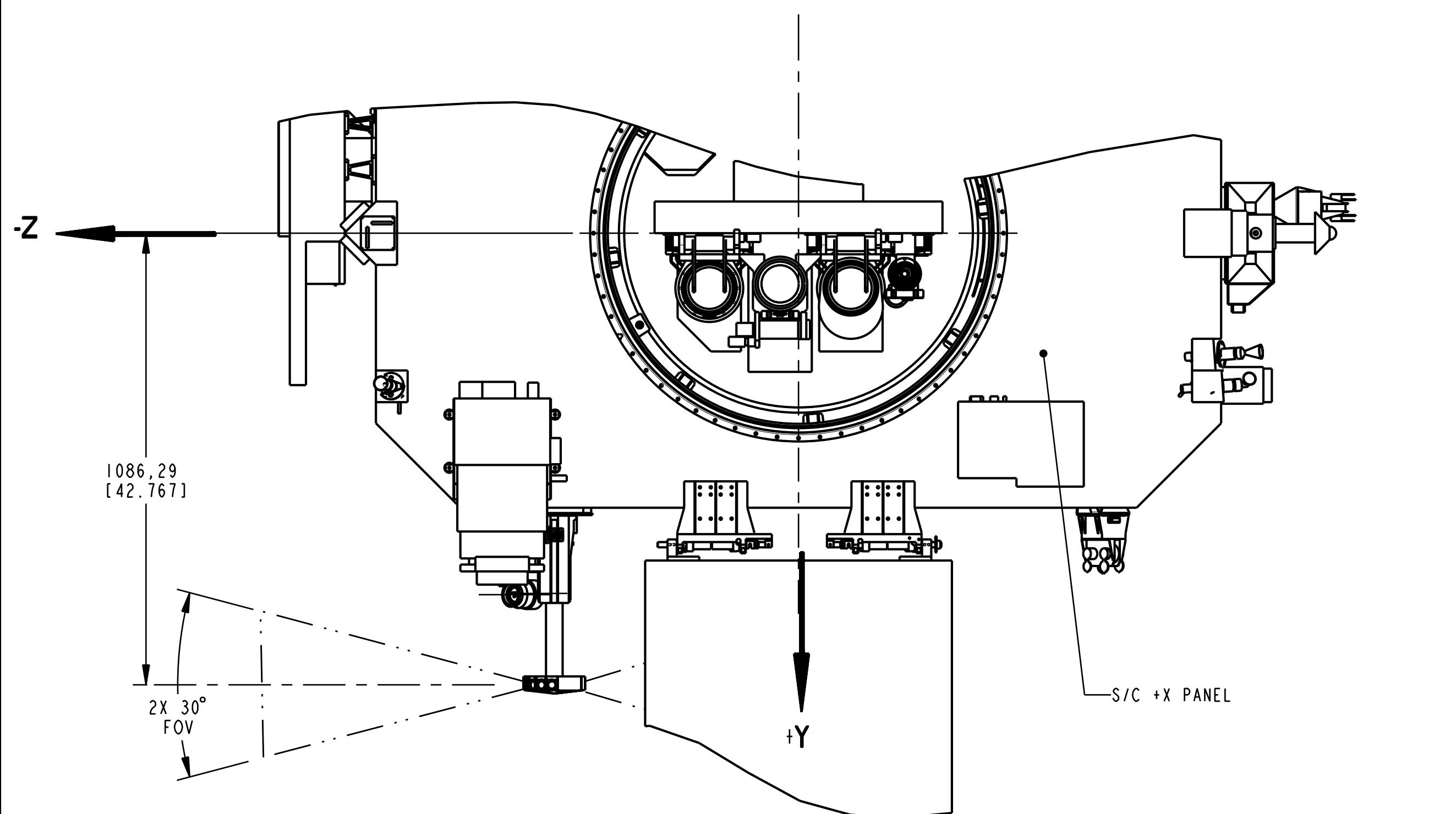
APPROVED-ENGINEER							

			GD	2053430			
			CODE: 663	SCALE: AS SHOWN	SHEET: 2 OF 3		

GD2053430

FOLD LINE

SYMBOL		REVISION	
ZONE	DESCRIPTION	DATE	APPROVAL
-	-	-	-



SEP/LET TELESCOPE FIELD OF VIEW
 DIMENSIONS SHOWN FROM S/C ORIGINS
 F.O.V.: 2X 133° X 30° FACETED
 SCALE 0.100

SEP/HET TELESCOPE FIELD OF VIEW
 DIMENSIONS SHOWN FROM S/C ORIGINS
 F.O.V.: 60° CONICAL
 SCALE 0.100

****ALL DIMENSIONS ARE FORMATTED IN: MILLIMETERS [INCHES]**

NATIONAL AERONAUTICS AND SPACE ADMINISTRATION			Goddard Space Flight Center		Greenbelt, Maryland
NAME	INIT.	DATE	DRAWING INTERPRETED PER GSFC-4673-64-1		
DESIGNER SHUMAN			INTERFACE CONTROL DRAWING SEP MAIN INSTRUMENT STEREO BEHIND SPACECRAFT		
DRAWN ---					
CHECKED ---					
APPROVED ---					
APPROVED ---					
APPROVED-ENGINEER ---					
			GD	2053430	
			CODE: 663	SCALE: AS SHOWN	SHEET: 3 OF 3

GD 2053430

FOLD LINE