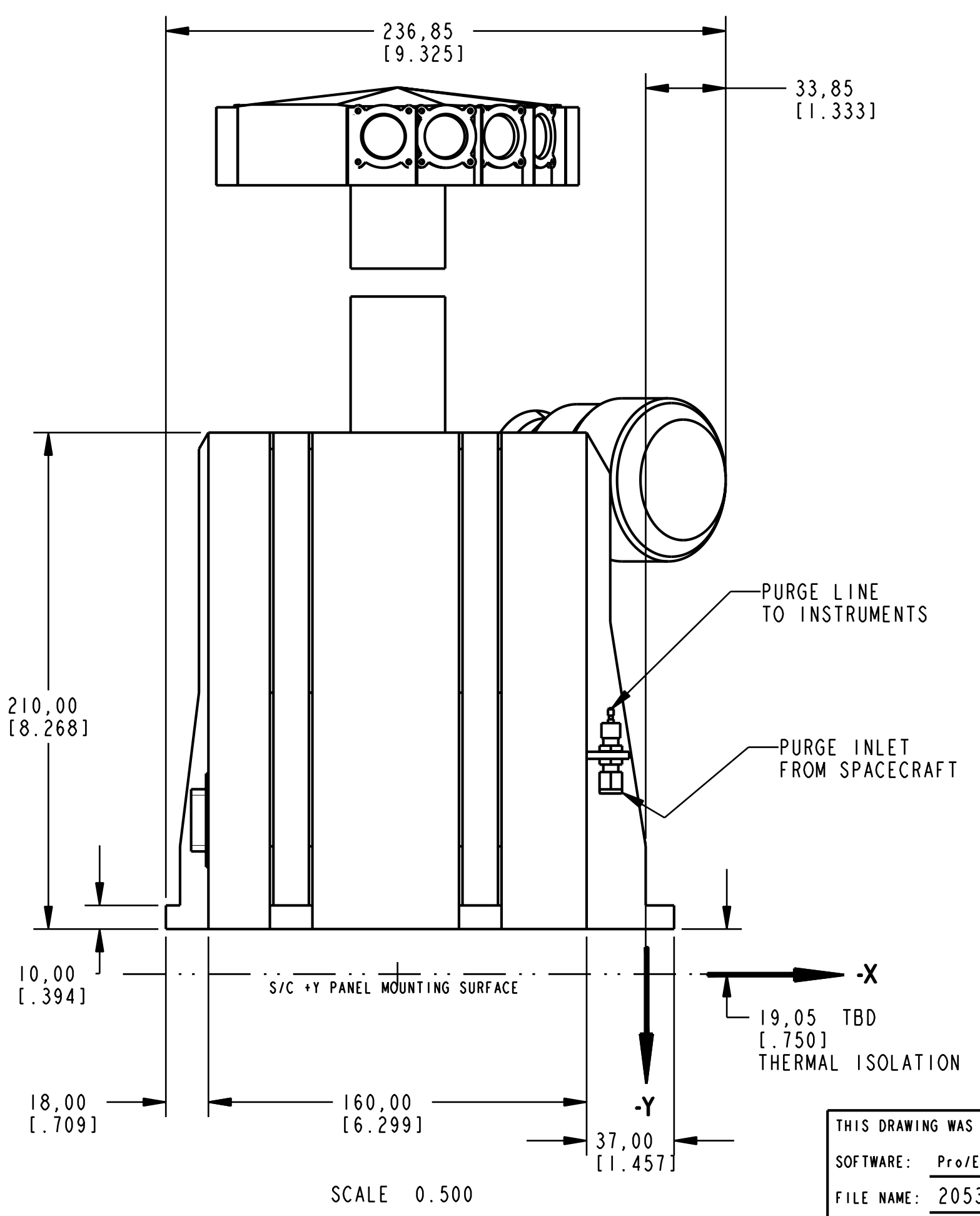
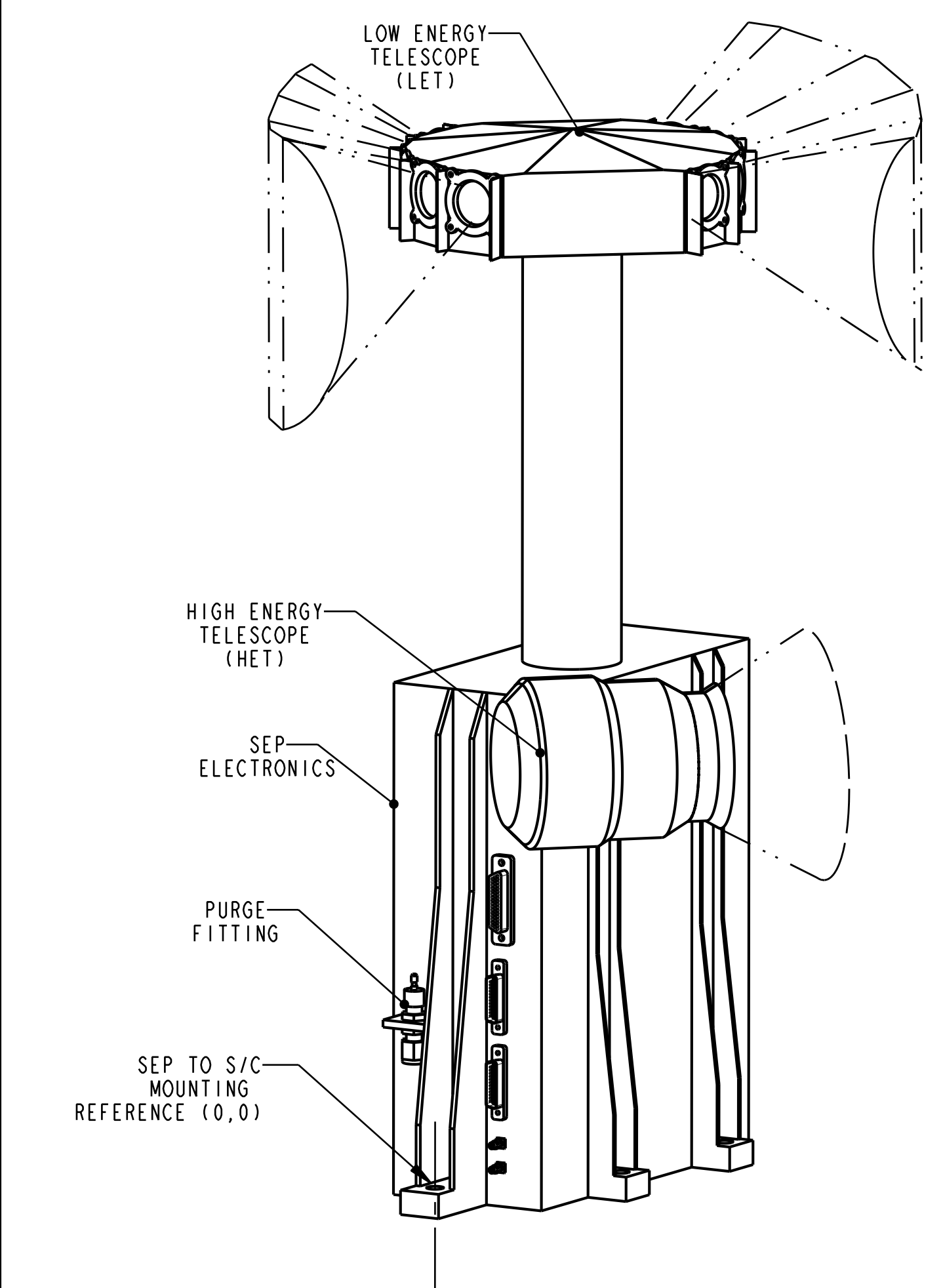
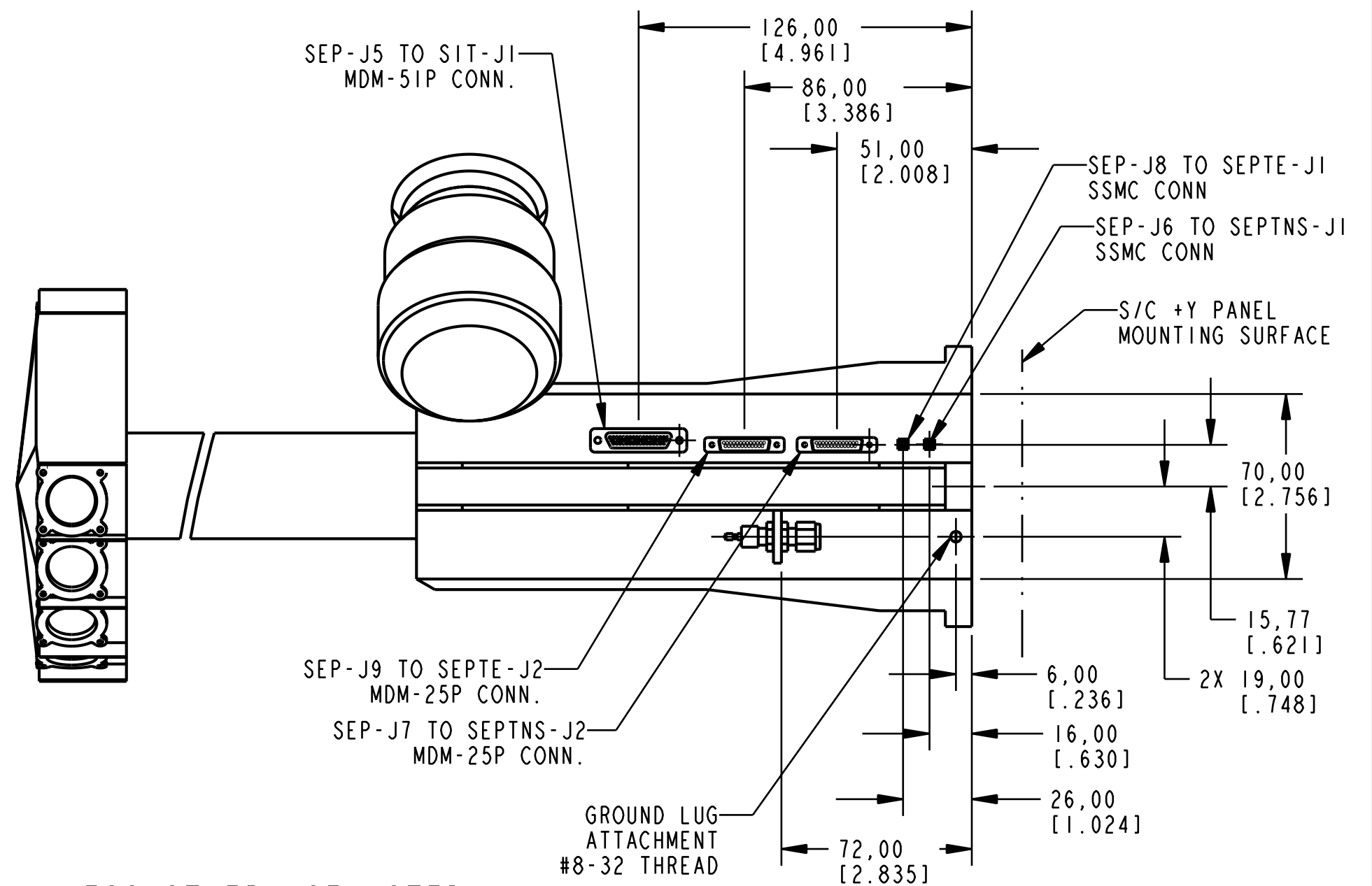
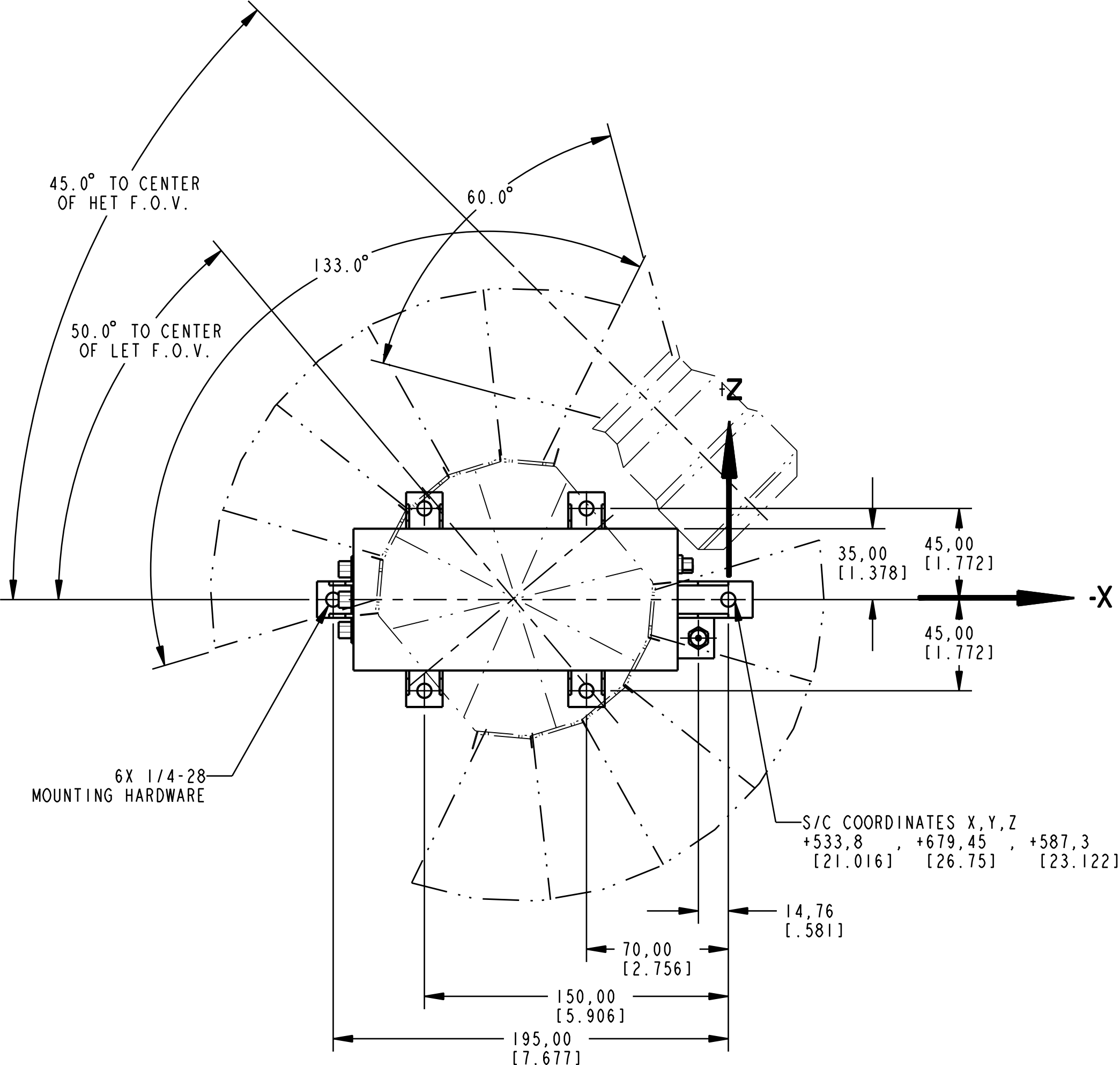
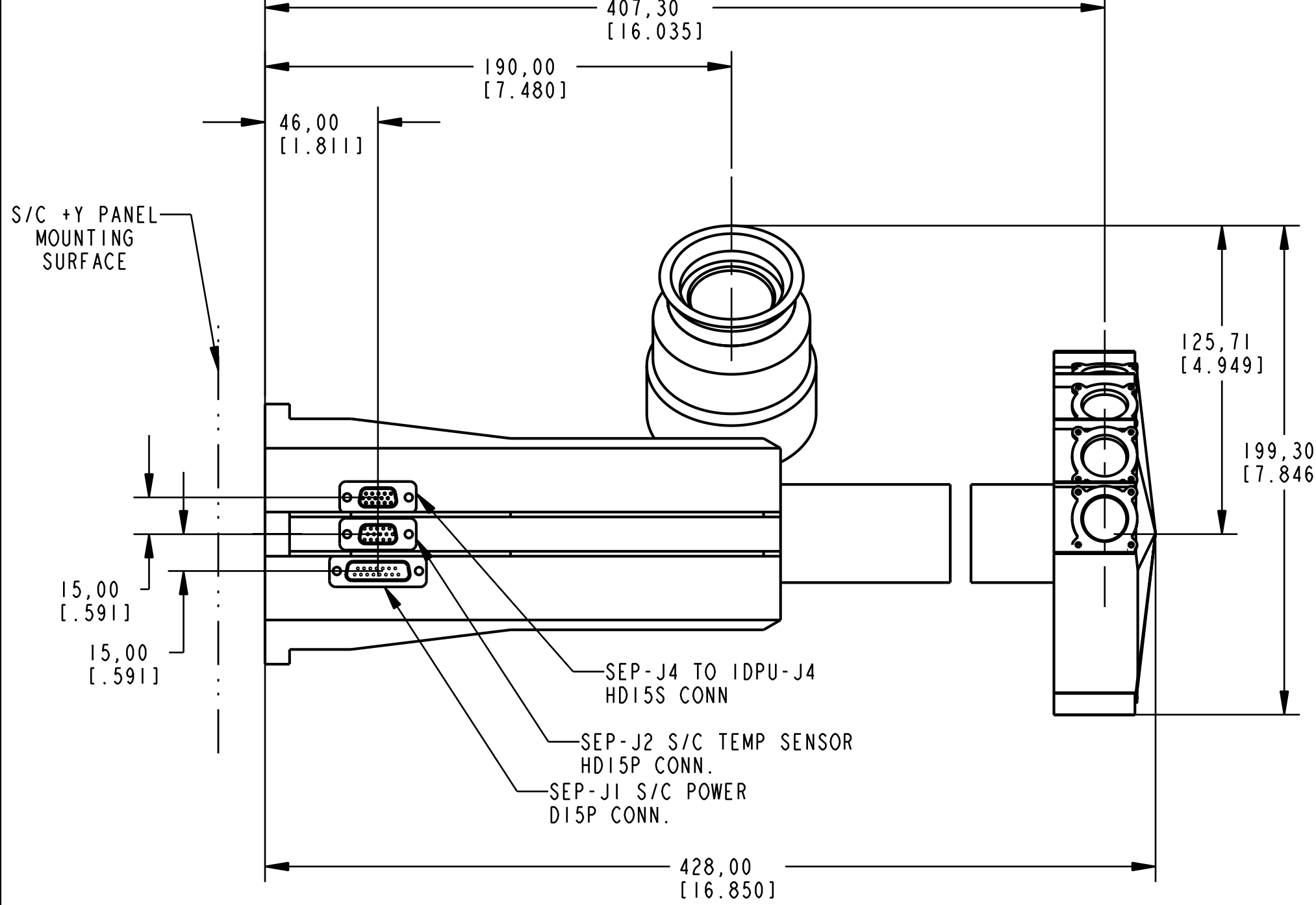


SYM	ZONE	DESCRIPTION	DATE	APPROVAL
-	-	-	-	-



NOTES: UNLESS OTHERWISE NOTED

- ESTIMATED EXPERIMENT MASS: 4.60 Kg
- ESTIMATED CENTER OF GRAVITY FROM DATUMS
X, Y AND Z: X Y Z
TBD TBD TBD
[TBD] [TBD] [TBD]
- INERTIA MATRIX:
THE INERTIA MATRIX IS CALCULATED BY PRO-E
I_{XX}= TBD I_{XY}= TBD I_{XZ}= TBD
I_{YX}= TBD I_{YY}= TBD I_{YZ}= TBD
I_{ZX}= TBD I_{ZY}= TBD I_{ZZ}= TBD
NOTE: THESE ARE BOX COORDINATES, NOT S/C COORDINATES.
- INSTRUMENT WILL BE MOUNTED TO SPACECRAFT ON THERMALLY ISOLATING BUSHINGS, MAT'L AND SIZE IS STILL TBD.
- INSTRUMENTS FIELDS OF VIEW ARE TO BE KEPT CLEAR FROM OBSTRUCTIONS WITHOUT PRIOR CONSENT FROM THE INSTRUMENT TEAM.
- RED TAG COVERS WILL BE PROVIDED OVER INSTRUMENT APERTURES AND MUST BE REMOVED JUST PRIOR TO LAUNCH.
- PURGE CONNECTOR, TBD, WILL ACCEPT 1/4" TUBE OUTSIDE DIAMETER WITH .19" MIN OPENING.
- INSTRUMENT MOUNTING LOCATION ON SPACECRAFT SHOWN ON SHEET 2; AND FIELD OF VIEW ORIGINS AND SIZES SHOWN ON SHEET 3.

ALL DIMENSIONS ARE IN MILLIMETERS (INCHES)

ITEM NO.	RECD	RECD	PART NO.	DESCRIPTION	MATERIAL	MATERIAL SPEC & NO.
LIST OF MATERIAL						
TOLERANCES:				NATIONAL AERONAUTICS AND SPACE ADMINISTRATION		
.XX .XXX ≤ FRACTIONS 125				Goddard Space Flight Center Greenbelt, Maryland		
±0.10 ±0.05 ±0.1 ±1/16				DRAWING INTERPRETED PER GSFC-4673-64-1		
REMOVE ALL BURRS AND SHARP EDGES R.010 OR CHAMFER MAX.						
DESIGNER SHUMAN						
DRAWN SHUMAN						
CHECKED VONROSEVINGE						
APPROVED						
APPROVED-STRESS						
APPROVED-ENGINEER						
STEREO AHEAD S/C				GD 2053400		
NEXT ASSEMBLY USED ON				CODE: 663 SCALE: AS SHOWN SHEET: 1 OF 3		

THIS DRAWING WAS PRODUCED USING
 SOFTWARE: Pro/ENGINEER VERSION: 2001
 FILE NAME: 2053400
 MODEL NAME: SEP-LEAD-INSTRUMENT-LAYOUT

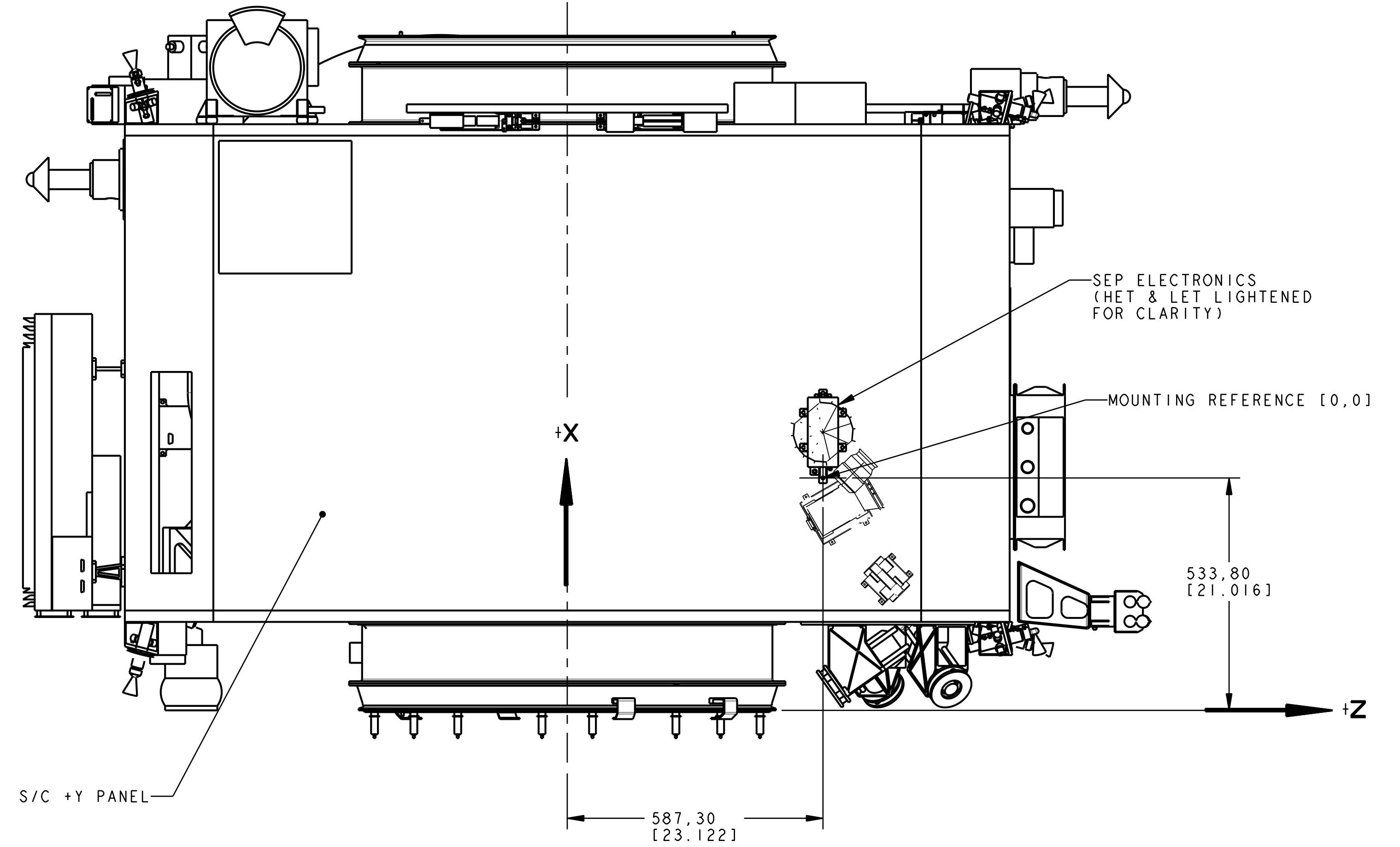
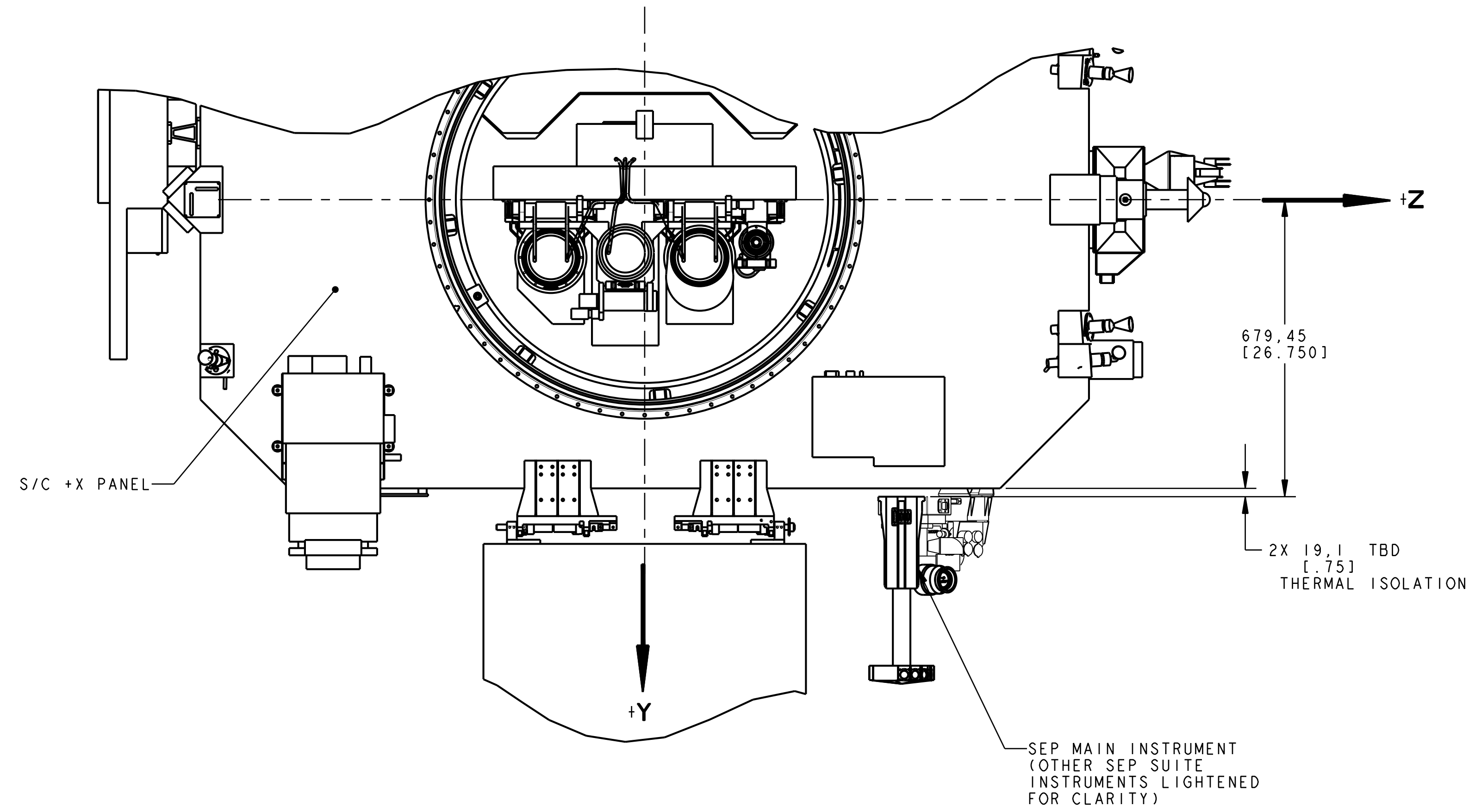
PLOT DATE: 22-Oct-01

SCALE 0.500

GD2053400

A

REVISION				
SYM	ZONE	DESCRIPTION	DATE	APPROVAL
-	-	-	-	-

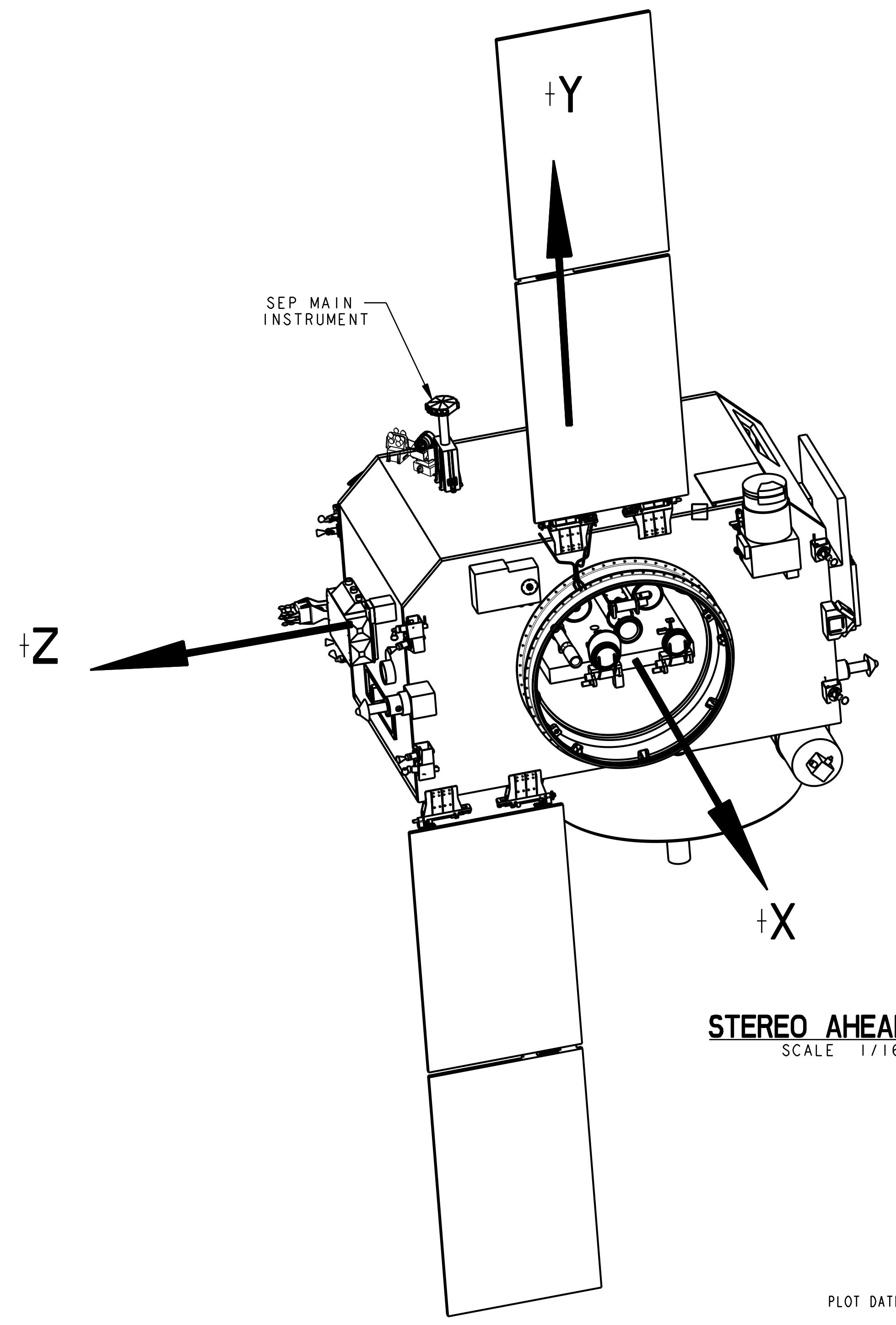


SEP ELECTRONICS ASSEMBLY MOUNTING LOCATION

SPACECRAFT COORDINATES [X,Y,Z]

+533.80 , +679.45 , +587.30
[21.016] [26.750] [23.122]

SCALE 1/8



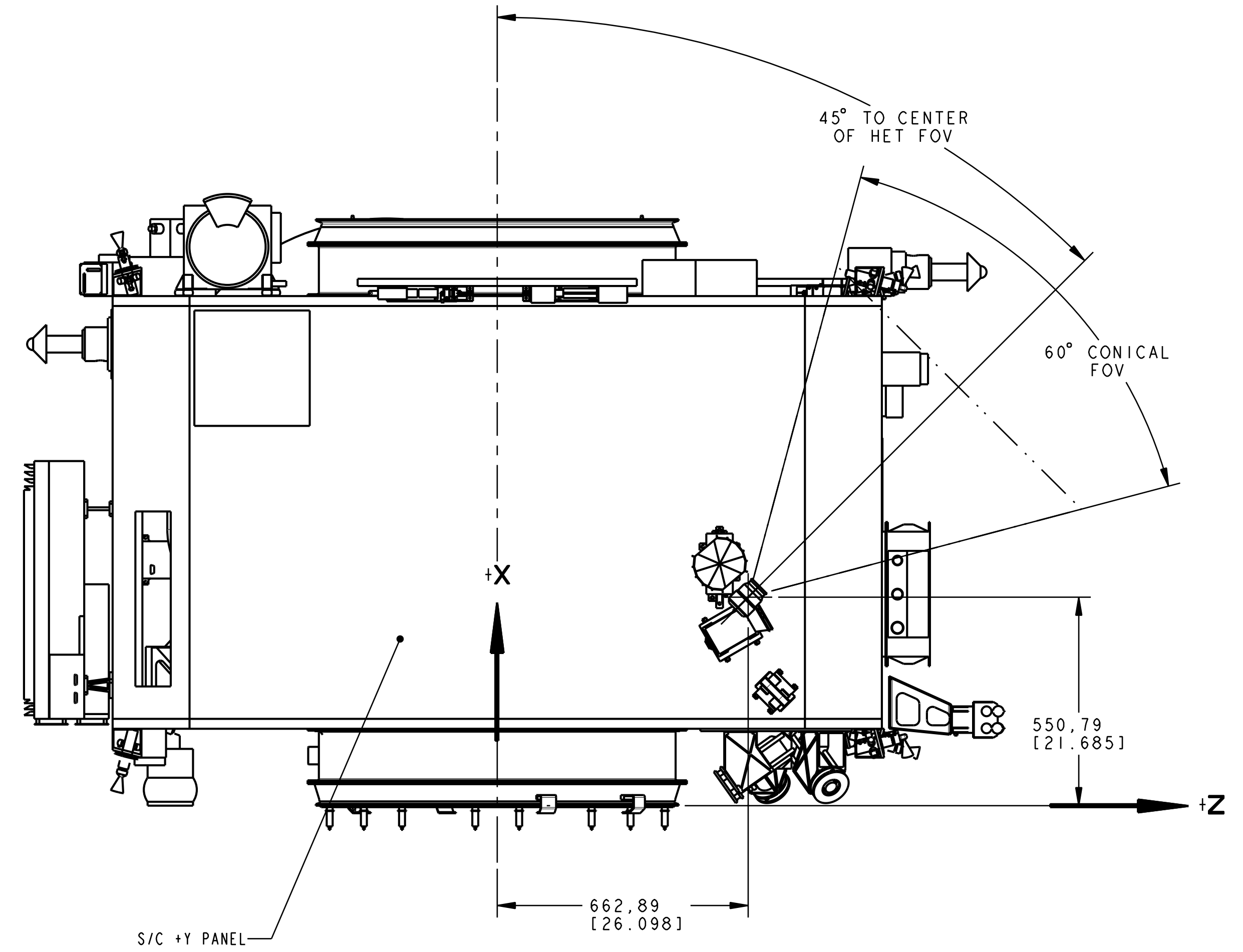
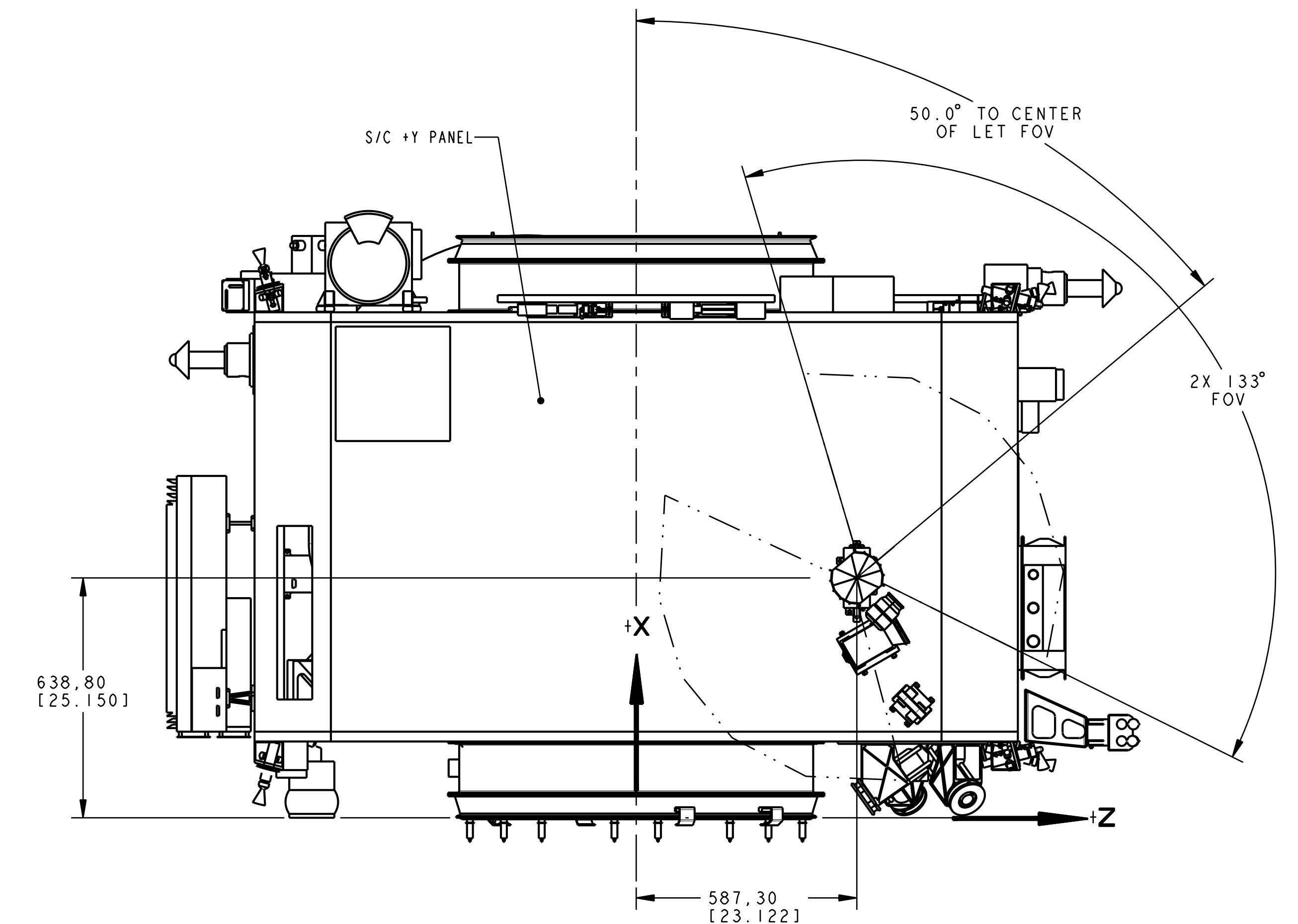
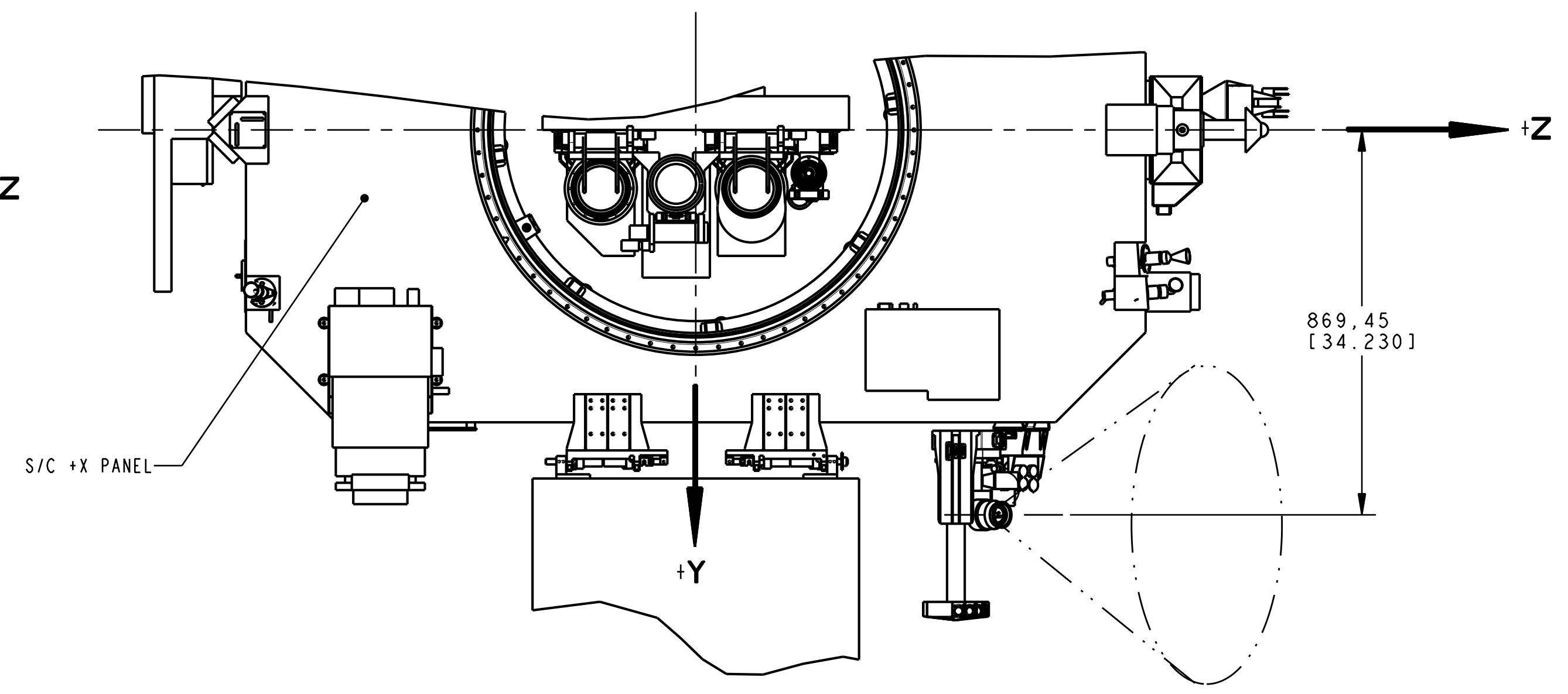
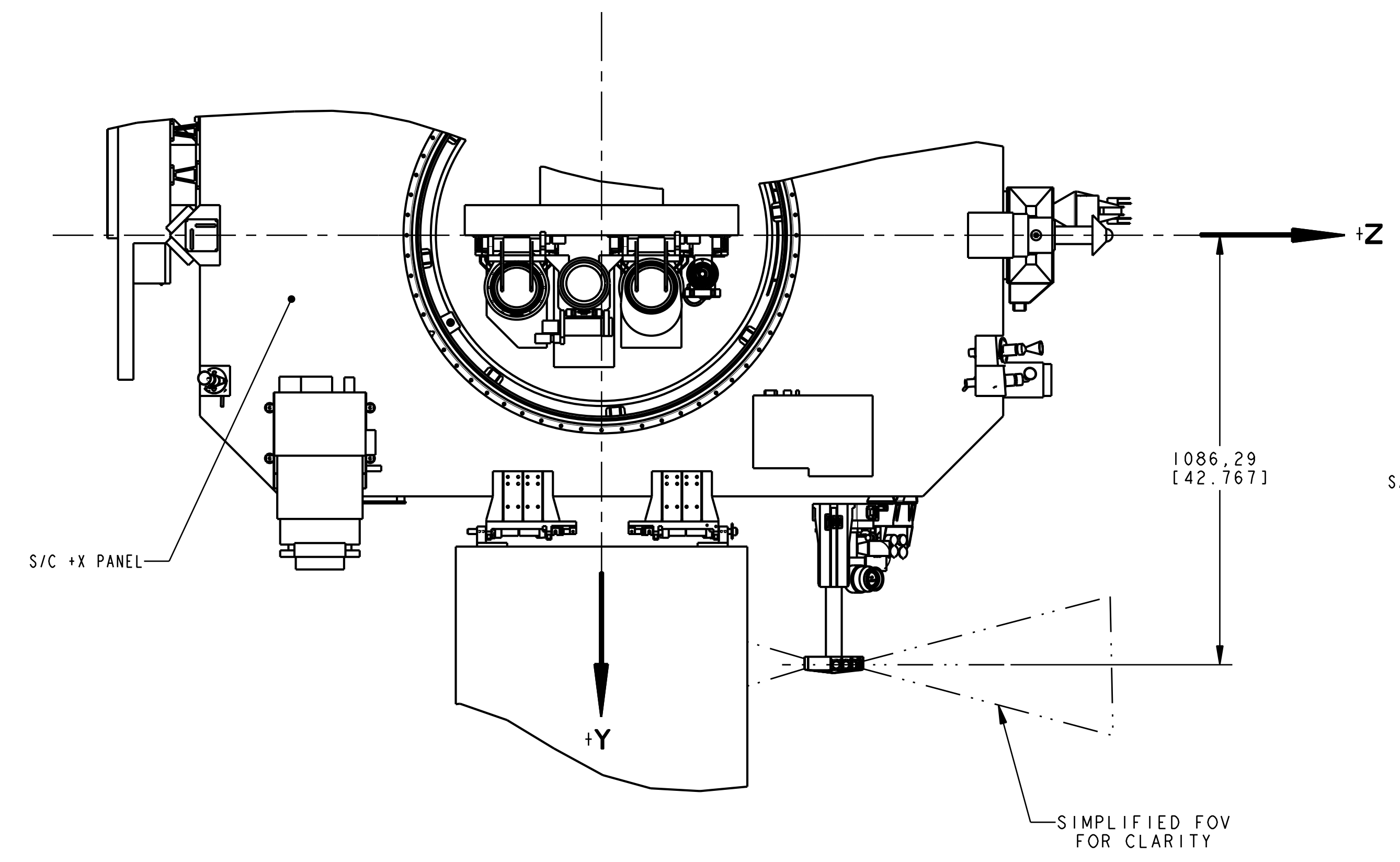
PLOT DATE: 22-Oct-01

NATIONAL AERONAUTICS AND SPACE ADMINISTRATION			Goddard Space Flight Center		Greenbelt, Maryland
NAME	INIT.	DATE	DRAWING INTERPRETED PER GSFC-X673-64-1		
DESIGNER SHUMAN			TITLE		
DRAWN SHUMAN			INTERFACE CONTROL DRAWING SEP MAIN INSTRUMENT STEREO AHEAD SPACECRAFT		
CHECKED VONROSEVINGE					
APPROVED					
APPROVED					
APPROVED-STRESS			GD	2053400	-
APPROVED-ENGINEER			CODE: 663	SCALE: AS SHOWN	SHEET: 2 OF 3

GD2053400

FOLD LINE

REVISION				
SYM	ZONE	DESCRIPTION	DATE	APPROVAL
-	-	-	-	-



SEP/LET TELESCOPE FIELD OF VIEW
 DIMENSIONS SHOWN FROM S/C ORIGINS
 F.O.V.: 2X 133° X 30° FACETED
 SCALE 1/10

SEP/HET TELESCOPE FIELD OF VIEW
 DIMENSIONS SHOWN FROM S/C ORIGINS
 F.O.V.: 60° CONICAL
 SCALE 1/10

PLOT DATE: 22-Oct-01

NATIONAL AERONAUTICS AND SPACE ADMINISTRATION			Goddard Space Flight Center		Greenbelt, Maryland
DESIGNER	INIT.	DATE	DRAWING INTERPRETED PER GSFC-X673-64-1		
SHUMAN			TITLE		
DRAWN			INTERFACE CONTROL DRAWING SEP MAIN INSTRUMENT STEREO AHEAD SPACECRAFT		
CHECKED					
APPROVED					
APPROVED					
APPROVED-STRESS			GD	2053400	-
APPROVED-ENGINEER			CODE: 663	SCALE: AS SHOWN	SHEET: 3 OF 3

GD2053400

A