

STEREO *IMPACT*

IMPACT/PLASTIC Low Voltage Power Converter Requirements

LVPSRequirements_B.doc
Version B – 2002-Jul-29

David Curtis, UCB IMPACT Project Manager

Peter Berg, UCB LVPS Designer

Document Revision Record

Rev.	Date	Description of Change	Approved By
A	2002-July-15	Preliminary Draft	-
B	2002-July-29	<ul style="list-style-type: none"> • Small changes to the SEP supply requirements from Caltech • Add PLASTIC currents & mechanical • Add SEP mechanical 	

Distribution List

Dave Curtis, UCB
 Peter Berg, UCB
 Steve McBride, UCB
 Branislav Kecman, Caltech
 Peter Walpole, UMD
 Reinhold Mueller-Mellin, U.Kiel
 Tycho von Ronsenvinge, GSFC
 John Schiefele, GSFC
 Claude Aoustin, CESR
 Steve Turco, UNH

Table of Contents

Document Revision Record	i
Distribution List	i
1. Introduction	1
1.1. <i>Document Conventions</i>	<i>1</i>
1.2. <i>Applicable Documents</i>	<i>1</i>
2. LVPS Requirements	1
2.1. <i>Primary Characteristics</i>	<i>1</i>
2.2. <i>EMC</i>	<i>1</i>
2.3. <i>Secondary Characteristics</i>	<i>2</i>
2.3.1. Digital / Analog Ground	<i>2</i>
2.3.2. SEPT Supplies	<i>2</i>
2.3.3. Peak Current.....	<i>2</i>
2.4. <i>Form Factor and Connector Definitions</i>	<i>2</i>
2.4.1. IDPU LVPS	<i>2</i>
2.4.2. SWEA LVPS	<i>2</i>
2.4.3. SEP LVPS	<i>2</i>
2.4.4. PLASTIC LVPS.....	<i>2</i>
3. SIT HVPS Requirements	7
3.1. <i>Synchronization</i>	<i>7</i>
3.2. <i>Control</i>	<i>7</i>
3.3. <i>Input Requirements</i>	<i>7</i>
3.4. <i>Output Requirements</i>	<i>7</i>
3.5. <i>Form Factor</i>	<i>8</i>
3.6. <i>Connectors</i>	<i>8</i>

1. Introduction

This document describes the requirements on the low voltage and high voltage power converters being built at UCB for STEREO. This includes low voltage converters for the IMPACT IDPU, SEP, and SWEA/STE, a low voltage converter for PLASTIC, and a high voltage converter for SIT. UCB will design, build, and test these supplies according to these requirements prior to providing them to the instrument teams.

1.1. *Document Conventions*

In this document, **TBD** (To Be Determined) means that no data currently exists. A value followed by **TBR** (To Be Resolved) means that this value is preliminary. In either case, the value is typically followed by a code such as UCB indicating who is responsible for providing the data, and a unique reference number.

1.2. *Applicable Documents*

The following reference documents include drawings and STEREO Project policies. All documents and drawings can be found on the Berkeley STEREO/IMPACT FTP site:

<http://sprg.ssl.berkeley.edu/impact/dwc/>

Or on the APL STEREO web site at:

<https://sd-forum.jhuapl.edu/stereo/>

1. Project/EMC_7881-9030_Rev- - EMC requirements
2. Project/EnvSpec7381-9003Rev- - Environmental specifications
3. Specifications/IDPUDesign_C - IDPU form factors & internal connectors
4. IMPACT_ICD_rev_d_11-16-01 - Spacecraft to IMPACT ICD (APL)

2. LVPS Requirements

The 4 low voltage power converters shall convert primary spacecraft 28V into secondary voltages as indicated in Figure 2-1.

2.1. *Primary Characteristics*

Each of the 4 supplies shall have a separate switched spacecraft service, as indicated in reference 4. The characteristics of the spacecraft 28V supply are indicated in reference 2 (including ground isolation requirements).

2.2. *EMC*

The supplies shall meet the EMC requirements called out in reference 1, in particular the conducted emissions and susceptibility requirements. Reference 4 includes a typical front end (filter) circuit for the LVPS.

2.3. **Secondary Characteristics**

The supplies shall provide the voltages listed in Figure 2-1. These supplies shall be regulated to +/-5% (half load to full load). High frequency (supply-generated) ripple on the secondaries shall be less than 10mV peak to peak at Max Current.

2.3.1. Digital / Analog Ground

The digital supplies (highlighted in figure 2-1) shall have a separate return from the analog supplies (not highlighted). These returns will be tied together in the instrument.

2.3.2. SEPT Supplies

The SEPT supplies are part of the SEP supply. These supplies shall have separate secondaries with separate isolated returns (both analog and digital). There are two such SEPT supplies (one for SEPT-E and one for SEPT-NS).

2.3.3. Peak Current

Figure 2-1 lists the nominal and surge current requirements. The supply shall perform within specs for loads up to at least 50% above the nominal current indicated.

2.4. **Form Factor and Connector Definitions**

2.4.1. IDPU LVPS

The IDPU LVPS form factor is described in reference 3. The LVPS shall have an MDM connector between the LVPS half of the tray and the other side. The mating connector shall be wired from there to the power input connector (IDPU-J1; pinout as called out in Reference 4) and the internal connector to the other boards (pinout in reference 3).

2.4.2. SWEA LVPS

The SWEA LVPS form factor is shown in figure 2-2 and 2-3. The supply shall be harnessed to a connector type MM-222-021-261-41WC (M83513/04-C11N) that mates with the DAC board via a pig-tail. This connector pinout is **TBD-UCB**.

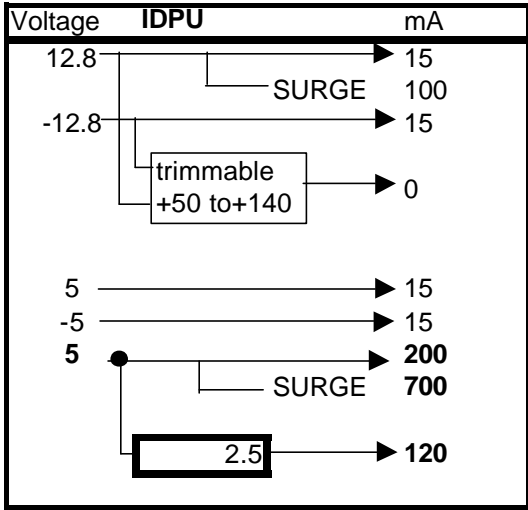
2.4.3. SEP LVPS

The SEP LVPS form factor is shown in figure 2-6. Secondary connector pinouts are TBD. Primary power connector pinout is defined in reference 4.

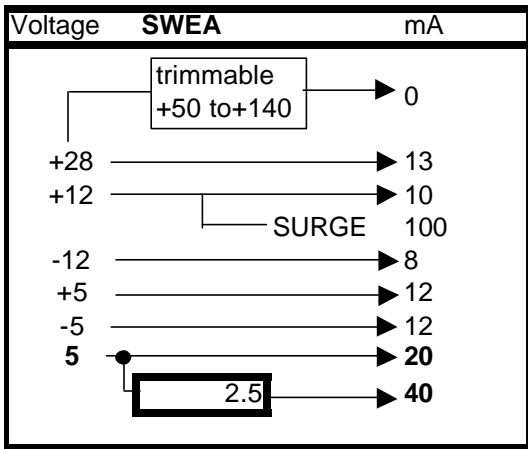
2.4.4. PLASTIC LVPS

The PLASTIC LVPS form factor is shown in figures 2-4 and 2-5. Secondary voltages are available on feed-through posts as shown. Pin assignments are TBD-UCB.

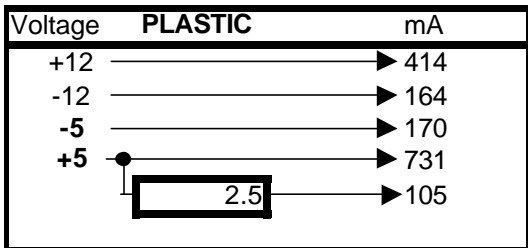
Figure 2-1 LVPS Voltage/Current Requirements



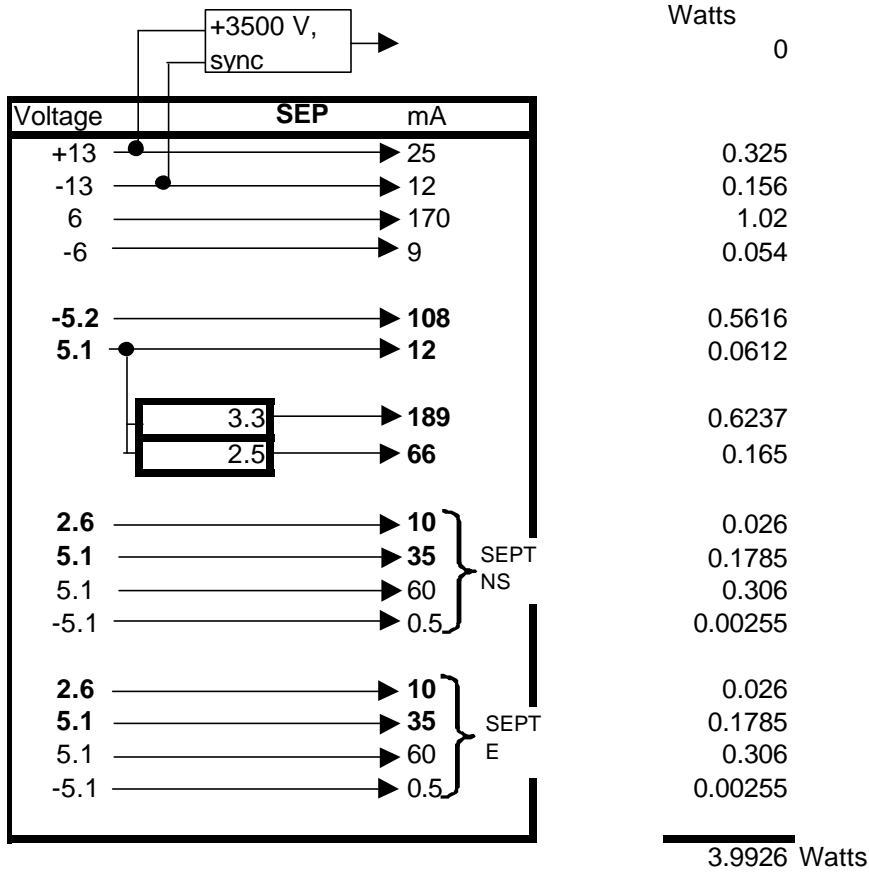
Watts	SURGE
0.192	
	1.28 Watts
0.192	
0.075	
0.075	
1	
	3.5 Watts
<u>0.3</u>	
1.834 Watts	6.614 Watts w/ surge



Watts	SURGE
0.364	
0.12	
	1.2 Watts
0.096	
0.06	
0.06	
0.1	
0.1	
<u>0.9</u> Watts	
	2.1 Watts w/ surge



Watts	
4.97	
1.97	
0.85	
3.66	
<u>0.26</u>	
11.70 Watts	(includes test port)



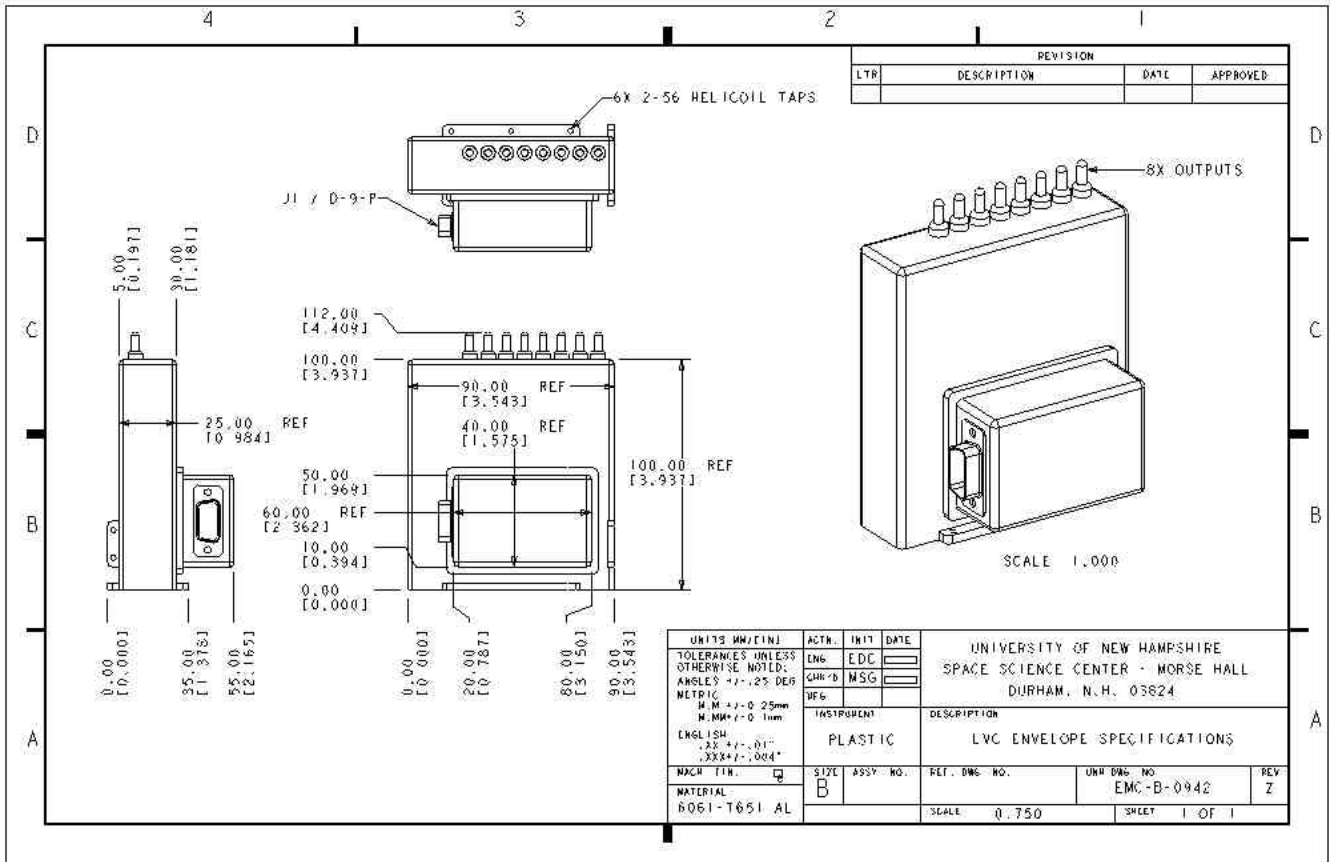


Figure 2-4, PLASTIC LVPS Form Factor

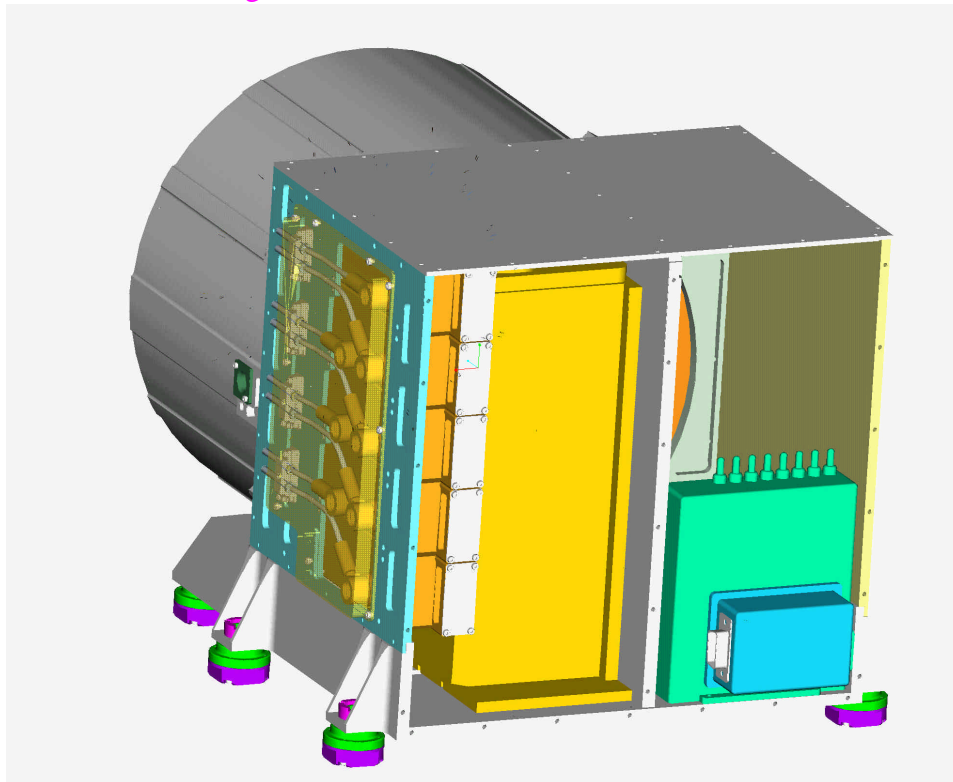
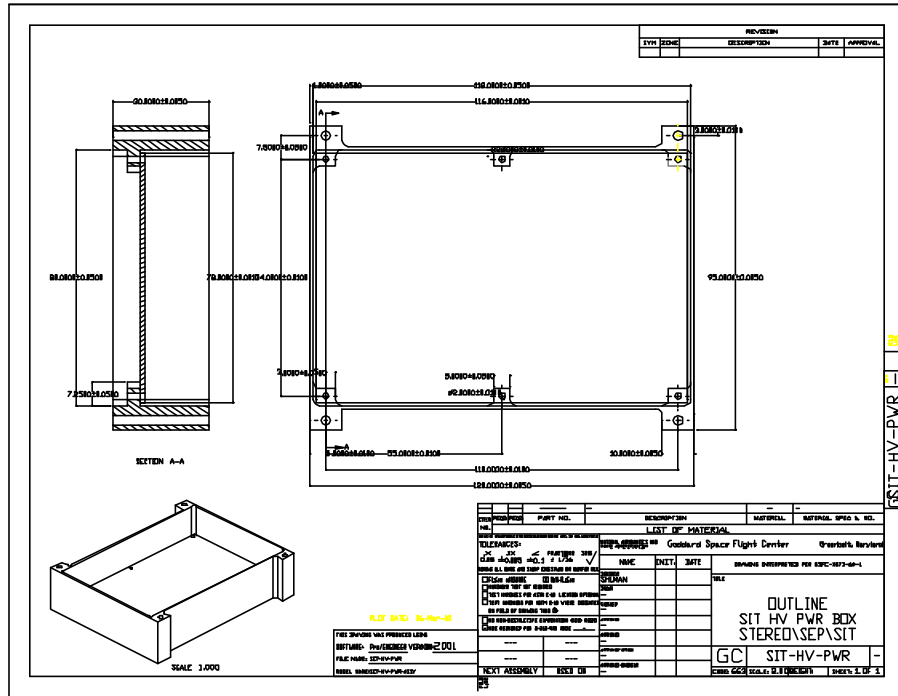


Figure 2-5, PLASTIC LVPS shown in PLASTIC

3.5. **Form Factor**



3.6. **Connectors**

The input connector is an MDM -9-S-H-003-B-A174. The output shall be have un-terminated wires which shall be terminated in the SIT instrument. The wires must be shielded in a continuous fashion between the boxes providing no gap.